

UNIVERSITY OF OXFORD

BODLEIAN LIBRARIES



WHAT'S ON

JANUARY - MARCH 2019

**BABEL: ADVENTURES IN TRANSLATION
SAPPHO TO SUFFRAGE
THINKING 3D: FROM LEONARDO
TO PRESENT**

EXHIBITIONS

OPEN UNTIL 24 FEBRUARY 2019

Sappho to Suffrage

Women who dared

To mark the centenary of women's suffrage in 2018, Women in the Humanities have created a modern suffrage wall. Find out more about these inspirational women who come from a variety of occupations along with historic treasures from the Bodleian Libraries' collections in this special exhibition celebrating the achievements of women who dared to do the unexpected.

Suitable for all ages. No booking required.

THE TREASURY, WESTON LIBRARY

ADMISSION FREE

treasures.bodleian.ox.ac.uk



OPENS 21 MARCH 2019



**THE TREASURY,
WESTON LIBRARY**

ADMISSION FREE

Thinking 3D

From Leonardo to present

For centuries artists and scientists have wrestled with how to convey three-dimensional objects on the page. Timed to celebrate the 500th anniversary of the death of Leonardo da Vinci, this exhibition shows how Leonardo and his contemporaries made great strides in the realistic depiction of 3D forms. Techniques developed from the Renaissance onwards revolutionized the way that ideas in the fields of anatomy, architecture, astronomy and geometry were relayed and ultimately how we perceive the world today.

OPENS 15 FEBRUARY 2019

Babel

Adventures in translation

This exhibition goes beyond the ancient myth of the Tower of Babel to explore the power of translation in the movement of ideas, stories and cultural practices around the world. Through a stunning selection of objects ranging from a 2nd century papyrus book and illuminated manuscripts to animal stories, religious books and a bilingual road sign, Babel explodes the notion that translation is merely about word-for-word rendering into another language. Treasures from the Bodleian Libraries' collections – both ancient and modern – illustrate how stories have travelled across time, territory, language and medium.

www.bodleian.ox.ac.uk/whatson

ST LEE GALLERY, WESTON LIBRARY

*In this fold-out print, from Athanasius Kircher's *Turris Babel* (1679), construction of the tower is busily underway.*

Bodleian Library Vet. B3 b.33, between pp. 40 and 41.



A page from the Codex Mendoza, a manuscript in Mexica picture-writing (with translation) created for Spanish imperial authorities in South America in 1541, shows seven towns in the top right, and across the rest of the page, the annual tribute they had to pay to their rulers in Tenochtitlan, including warrior outfits, bins of maize and beans, and a live eagle.

Bodleian Library, MS. Arch. Selden. A. 1, fol. 31r.



FROM BODLEIAN PUBLISHING

Babel: Adventures in Translation

Dennis Duncan, Stephen Harrison, Katrin Kohl and Matthew Reynolds

9781851245093

HB £20

LIBRARY LATES: BABEL

Friday 8 March | 7 – 9.30pm

Join us for an interactive celebration of languages and cultures at the Weston Library.

BLACKWELL HALL, WESTON LIBRARY

For more info please see the Events page



TALKS & WORKSHOPS

Free talks and events on subjects relating to the Bodleian Libraries collections

UNLESS OTHERWISE STATED ALL TALKS AND EVENTS ARE IN THE LECTURE THEATRE, WESTON LIBRARY **ADMISSION FREE BOOKING REQUIRED**

Lunchtime lectures

Two series of lunchtime lectures will run relating to the exhibitions *Babel: adventures in translation* and *Thinking 3D: from Leonardo to present*. Explore the lectures planned online at www.bodleian.ox.ac.uk/whatson

Sheldon Tapestry Map talks

Daily 11.30am – 12 noon

Every day a member of the Bodleian's Map Room team talks about the background of the Sheldon Tapestry Map of Worcestershire, which is displayed in Blackwell Hall in the Weston Library.

For more information and to book tickets please go to www.bodleian.ox.ac.uk/whatson

Rivers and ice: Early Modern maps of the far North

Thursday 24 January | 4.30 – 6pm

Charlotta Forss, Bodleian Libraries and Stockholms Universitet

The 26th annual series of the Oxford Seminars in Cartography will take place in the Lecture Theatre of the Weston Library. Join us for refreshments in the Bodleian Café from 3.45pm.

Manuscripts from German-speaking lands

Tuesday 19 March | 2 – 5pm
followed by a drinks reception

This symposium marks the launch of a digital collaboration between the Bodleian Libraries and the Herzog August Bibliothek, Wolfenbüttel, Germany.

Six-week linocut workshop

Starts Wednesday 16 January | 5.30 – 8pm

Robin Wilson, Rosie Fairfax-Cholmeley

Linocut printmaking workshop using the hand-operated presses in the Old Bodleian Library.

PRINTING WORKSHOP, SCHOLA MUSICAE, OLD BODLEIAN LIBRARY

BOOKING REQUIRED £150 OVER 18s ONLY

Love and the soul workshop

Saturday 9 February | 11am – 1pm

Regine May, Michael Daniell

Hand print a Valentine card for your own Cupid or Psyche, and learn about the ancient Roman story that inspired artists from the Renaissance to William Morris.

PRINTING WORKSHOP, SCHOLA MUSICAE, OLD BODLEIAN LIBRARY

BOOKING REQUIRED £6



EVENTS

Art in the Library

The open book

Saturday 26 January | 11am – 4pm

With a focus on Tania Kovats' *The Space of Reading*, this interactive day of drop-in workshops and demonstrations celebrates the contemporary and historical role of art within the Bodleian Libraries' collection.

BLACKWELL HALL, WESTON LIBRARY **DROP-IN**

Tuesday 29 January | 5 – 6pm

Inspired by the painted panels of Duke Humfrey's Library ceiling, contemporary artist Tania Kovats has created a new artwork, *The Space of Reading*, at the threshold of the Weston Library. Join us for a lecture with Tania to hear about her work and life as an artist.

LECTURE THEATRE, WESTON LIBRARY **REGISTRATION REQUIRED**

Library Lates: Babel

Friday 8 March | 7 – 9.30pm

As Brexit leads some to fear isolationism, join us for an interactive celebration of languages and cultures at the Weston Library. This Library Late event is a chance to immerse yourself in a multicultural experience with music, dancing and fun language activities that showcase linguistic and cultural diversity in the UK and beyond.

BLACKWELL HALL, WESTON LIBRARY **REGISTRATION REQUIRED**

For more information and to book tickets please go to www.bodleian.ox.ac.uk/whatson

Thinking inside the box

Saturday 2 February | 11am – 4pm

Precious books need protection, particularly in transit, so intricate – or robustly practical – boxes were created to carry books across cultures.

Meet expert curators and find out more about some of the unusual boxes, satchels and wrappings that cocoon the Bodleian's books. Explore the cutting-edge technology behind creating modern boxes for library and museum objects, watch an artist demonstrate the technique of traditional wood engraving or make your own matchbox book.

BLACKWELL HALL, WESTON LIBRARY **DROP-IN**

Connect with comics

Saturday 30 March | 11am – 4pm

Join us on a journey that charts the evolution of the British comic, from the innocent humour of childhood classics to the subversive wit of *Watchmen* and *V for Vendetta*. Mini talks by curators and contributions from current comic book artists will explore how British-based writers and illustrators have changed the way we see the once humble comic book.

BLACKWELL HALL, WESTON LIBRARY **DROP-IN**

FT WEEKEND OXFORD LITERARY FESTIVAL Saturday 30 March – Sunday 7 April 2019

This annual event is held at the Bodleian Libraries and, as cultural partner to the Festival, many talks take place in Bodleian sites: the Lecture Theatre in the Weston Library and in the beautiful Divinity School.

Additional activities take place in Blackwell Hall such as the Bodleian's historic printing presses at work. Printing workshops take place in the printing room off the Old School

Quad, tours to Duke Humfrey's Library run throughout the week, and the Bodleian's cafe and shops, selling beautiful books and gifts, will also be open.

Events on 30 & 31 March include "Connect with Comics" on Sat 30 March (see above for details), a children's Roald Dahl event and talks aimed at children by Gill Lewis, James Watson, and Geraldine McCaughrean.

For full information and to book tickets please go to <http://oxfordliteraryfestival.org>

DISPLAYS

All displays are open daily. Check opening hours online before visiting.

www.bodleian.ox.ac.uk/whatson **ADMISSION FREE**

Story of Phi

Restricted books

Until 13 January

In the Victorian age the Bodleian created a restricted category for obscene books, known as φ (phi). This display, showcasing many items never previously exhibited, explores changing ideas about censorship and sexuality.

BLACKWELL HALL, WESTON LIBRARY



Love and the soul

A romance from the Roman world

5 January – 10 March

This display will explore the rich inspiration that the delightful second-century Latin love-story of *Cupid and Psyche* by Apuleius has provided for book-illustrators since the invention of printing – above all for William Morris and Edward Burne-Jones.

PROSCHOLIUM, OLD LIBRARY

Thinking inside the box

19 January – 17 February

A display of boxes, bags, and satchels used for carrying books at different times and places – inspired by the Bodleian's recent acquisition of a book-coffer from 15th-century medieval Paris.

BLACKWELL HALL, WESTON LIBRARY

British comics

Frame by frame

23 February – 28 April

Join us to explore the evolution of the British comic, from graphic images of apocalypse in medieval block books to the anarchy of *V for Vendetta* and the inventiveness of indie comics today.

BLACKWELL HALL, WESTON LIBRARY

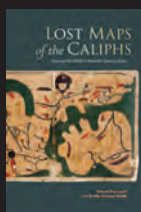
A story in stone and bone

16 March – 12 May

Brought to life through the writing and drawings of the antiquaries John Aubrey and William Stukeley, the story of Stonehenge continues to unfold today through recent developments in archaeological science.

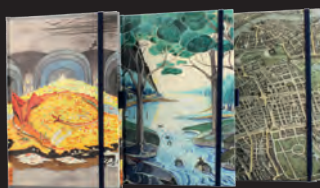
PROSCHOLIUM, OLD LIBRARY

NEW FROM BODLEIAN PUBLISHING



Lost Maps of the Caliphs:

Drawing the World in
Eleventh-Century Cairo
Youssef Rapoport and Emilie
Savage-Smith
9781851244911 | HB £37.50



London Map Journal
9781851245222 | HB £9.99

Tolkien Smaug Journal
9781851245277 | HB £9.99

Tolkien Raft-elves Journal
9781851245215 | HB £9.99

Available in the Bodleian Shops or online at www.bodleianshop.co.uk

FRIENDS OF THE BODLEIAN LECTURES

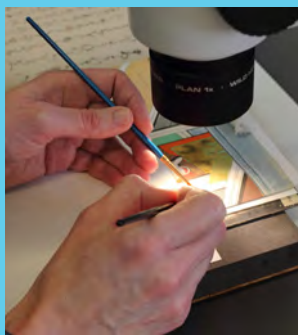
All lectures are free and are held in the Lecture Theatre, Weston Library
www.bodleian.ox.ac.uk/whatson

The conservation of Japanese collections at Bodleian Libraries

15 January | 1 – 1.45pm

Virginia M. Llado-Buisan,
Head of Conservation and Collection Care

Learn about the conservation of unique Japanese items such as Nara ehon, a Japanese genre of lavishly-illustrated literature from the 15-18th centuries. This lecture includes a small display of Japanese conservation and artists' materials.



Spoils of the secularization:

Monastic music sources in the Bodleian Library

14 February | 1.30 – 2.15pm

Dr Barbara Eichner,
Oxford Brookes University

Learn about monastic music-making in an era of political change and religious upheaval. This talk will explore a selection of chant books, musical fragments and polyphonic choir books produced or commissioned by monasteries in Southern Germany during the Middle Ages and the Early Modern Era, focussing in particular on the aftermath of the Reformation and the era of Catholic Reform until the outbreak of the Thirty-Years War.

Please check timings online at
www.bodleian.ox.ac.uk/whatson

In Pursuit of a Prince:

Archival research into the life of Albert

25 March | 1 – 1.45pm

Andrew N Wilson

Distinguished historian, critic and commentator Andrew N Wilson has drawn upon manuscripts, rare books and archives for many of his biographies. In this talk he discusses how archives and documents provide an invaluable insight into the life and times of his subjects, particularly Prince Albert, the husband and consort of Queen Victoria, and the subject of Wilson's next book.

SUPPORT THE BODLEIAN, MAKE A DONATION TODAY

Help safeguard some of the world's greatest literary and cultural treasures by making a donation to the Bodleian Libraries today. Your support will allow the Bodleian to keep exhibitions free for all, broaden access to collections through digitization, and ensure fragile items are conserved for future generations.

To donate online or find out more about the ways you can support the Bodleian Libraries, please visit www.bodleian.ox.ac.uk/give

You can also contact us at development@bodleian.ox.ac.uk or 01865 611552.

Already leaving a legacy to the Bodleian Libraries? Please let us know so we can make sure to include you in our Bodley's Circle members group.

BODLEIAN TOURS

A trip to Oxford is incomplete without a visit to the world famous Bodleian Libraries. Guided tours to see inside its ancient rooms run daily.

The magnificent gothic Divinity School, the University's earliest teaching room which was designed to inspire, is also available to visit, or take an audio tour around the historic exterior quadrangles.

The Weston Library on Broad Street is the home of the Bodleian's special collections, some of which can be seen in the exhibition galleries. Don't forget to also visit our fantastic café and shops.

To find out more, visit www.bodleian.ox.ac.uk/whatson/visit
Phone: +44 (0)1865 277094
Email: tours@bodleian.ox.ac.uk

BODLEIAN SHOPS

Take a treasure home. Visit the Zvi Meitar Bodleian Libraries Shop in the Weston Library or the Libraries Shop set in the tranquil, historic Old Schools Quadrangle, offering gifts inspired by the Libraries' collections. Opening hours are Mon to Fri 10am–5.30pm; Sat 10am–5pm; Sun 11am–5pm.

Also available for purchase online at www.bodleianshop.co.uk
[@bodleianshop](https://twitter.com/bodleianshop)

BODLEIAN PUBLISHING

Bodleian Library Publishing produces beautiful and authoritative books which help to bring the riches of Oxford's libraries to readers around the world. Our titles include non-fiction, high-quality illustrated art books, facsimiles, stationery, gift and children's books, as well as titles related to our exhibitions.

Email: publishing@bodleian.ox.ac.uk to request a free catalogue.

www.bodleianshop.co.uk
[@BodPublishing](https://twitter.com/BodPublishing)

FIND US

Bodleian Libraries, Broad Street
Oxford, OX1 3BG
t: +44 (0)1865 277094
e: tours@bodleian.ox.ac.uk

OPENING HOURS FOR VISITORS

Bodleian Library

Mon to Fri: 9am–5pm
Sat: 9am–5pm
Sun: 11am–5pm

Weston Library

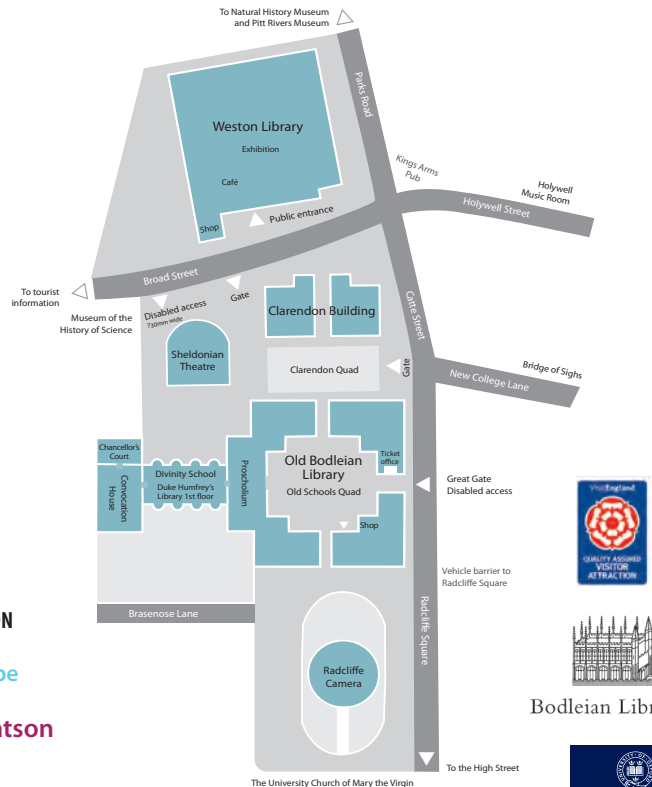
Mon to Fri: 8.30am–5pm
Sat: 9am–5pm
Sun: 11am–5pm

Exhibition galleries are open
Mon to Sat: 10am–5pm
Sun: 11am–5pm

SUBSCRIBE TO OUR MONTHLY WHAT'S ON E-NEWSLETTER

www.bodleian.ox.ac.uk/subscribe

www.bodleian.ox.ac.uk/whatson



Bodleian Libraries

