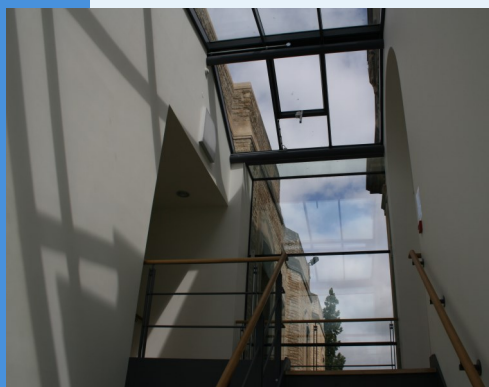


Welcome to Science and Medicine Dispatch, the monthly newsletter bringing you items of interest from the Science and Health Care Libraries of Oxford University. Subscribe by sending a blank email to [rsl-and-hcl-newsletter-subscribe@maillist.ox.ac.uk](mailto:rsl-and-hcl-newsletter-subscribe@maillist.ox.ac.uk), or contact [newsletter.rsl@bodleian.ox.ac.uk](mailto:newsletter.rsl@bodleian.ox.ac.uk). The newsletter can also be read online at [www.bodleian.ox.ac.uk/science/about/science-and-medicine-dispatch](http://www.bodleian.ox.ac.uk/science/about/science-and-medicine-dispatch)



### Opening Hours (Vacation)

Monday to Friday 8:30am-7pm

Saturdays 10am-2pm

Sundays closed

### Contacts

Radcliffe Science Library

Phone: 01865-272800

Email: [enquiries.rsl@bodleian.ox.ac.uk](mailto:enquiries.rsl@bodleian.ox.ac.uk)

Web: [www.bodleian.ox.ac.uk/science/](http://www.bodleian.ox.ac.uk/science/)



@radcliffescilib



Radcliffe Science Library

### Improvements to SOLO



SOLO underwent an upgrade on 14th July.

New features include:

- Prominent coloured dots indicate where online access is available
- Info buttons next to library names so you can quickly check whether you can use that particular library, where it is, opening hours etc.
- Browse related titles feature allows you to explore similar books from libraries across the University

If you have any problems with SOLO, please let library staff know at [olishelp@bodleian.ox.ac.uk](mailto:olishelp@bodleian.ox.ac.uk).

### What's new

#### • Isis Innovation change of address

[Isis Innovation](#) can now be found at Buxton Court, 3 West Way, Oxford OX2 0SZ. They will continue to have a hot-desk in the RSL Entrance Hall Lounge on Mondays, 2-5pm.

#### • Have your say on the next-generation ORA

Focus groups on developing the [Oxford Research Archive \(ORA\)](#) will take place Wednesday 16th and Tuesday 22nd September. Details can be found at <http://openaccess.ox.ac.uk/ora-focus-groups/>

#### • Alumni Weekend event - 3D printing demonstration

The RSL will be holding a 3D printing demonstration on Saturday 19th September, 10am-2pm, as part of Alumni Weekend. No booking needed.

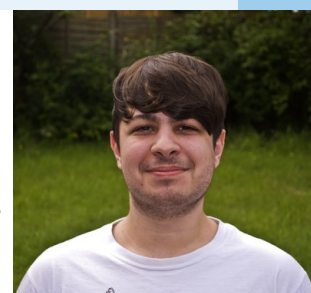
#### • TAIR database

The TAIR database ([www.arabidopsis.org](http://www.arabidopsis.org)), which provides molecular biological data on *Arabidopsis thaliana*, has ceased to offer free access. If you use this database, please contact your Subject Librarian ([www.bodleian.ox.ac.uk/science/contact/radcliffe-science-library-staff](http://www.bodleian.ox.ac.uk/science/contact/radcliffe-science-library-staff)).



### Welcome to Richard

Richard Smith joined the RSL in June as our **Technology Support Officer**. Richard has a degree in 3D Computer Animation and has experience with a range of technologies, including mobile devices, Virtual Reality and 3D printing. His previous roles include a stint with the Google Play Store. Richard can be contacted with any technical query you may have at 01865 (2)72854 or [richard.smith@bodleian.ox.ac.uk](mailto:richard.smith@bodleian.ox.ac.uk).



Richard Smith

### Welcome to Alessesandra

Alessandra Vetrugno recently joined the RSL as our new **Computer Science and Engineering Librarian**. Alessandra is originally from Lecce in Puglia and has an MSc in Automation engineering and an MSc in Library Science. Her previous roles include Cataloguing Team Leader for Dawson Books. Alessandra can be contacted at 01865 (2) 72817 or [alessandra.vetrugno@bodleian.ox.ac.uk](mailto:alessandra.vetrugno@bodleian.ox.ac.uk).



Alessandra Vetrugno

## Opening Hours

### Cairns Library, John Radcliffe

Accessible 24 hours a day, 7 days a week

Staffed 9am-7pm Monday to Friday,  
10am-7pm Wednesday

### Knowledge Centre, Old Road Campus

Accessible 9am-6pm Monday to Friday  
Staffed 9am-6pm Monday to Friday,  
10:45am-6pm Wednesday

## Contacts

Phone: 01865-221936

Email: [hcl-enquiries@bodleian.ox.ac.uk](mailto:hcl-enquiries@bodleian.ox.ac.uk)

Web: [www.bodleian.ox.ac.uk/medicine](http://www.bodleian.ox.ac.uk/medicine)

## Welcome to new Clinical Medicine students

Welcome to the new Fourth Year Clinical Medicine students and Graduate Entry Medicine students joining us "up the hill"!

We'll be contacting you soon with details of an NHS OpenAthens username – this will let you download the BNF app to your mobile device.

Also, the Libraries provide a wide range of facilities to you, including:

- 24/7 access to the Cairns Library with your University Card.
- Bookable Group Study Rooms at both the Cairns Library and Knowledge Centre.
- Multiple copies of Clinical Reading Lists texts available in print, and online where available.
- Laptop and iPad lending service at both the Cairns Library and Knowledge Centre.

## New access to UpToDate – including a mobile app!

Access to *UpToDate* has changed to *UpToDate Anywhere* and is now available via an individual username and password. Once registered, you will have access from any web browser and up to two mobile devices, including via the new *UpToDate* app on your smartphone or tablet.

### For Medical Students and other members of the MSD:

You'll need to sign up by going to *UpToDate* via Oxlip+ -

<http://oxlip-plus.bodleian.ox.ac.uk/> or SOLO - <http://solo.bodleian.ox.ac.uk/>.

You'll be taken to the University of Oxford Single Sign-On screen and once you've signed in you'll be taken to a webpage to create an account. You can then use your individual username and password to log in via the web and

## UpToDate® Anywhere

the *UpToDate* app. Your password will expire every 90 days so you'll need to go through the Oxlip+/SOLO link from time to time to refresh it.

### NHS users:

You can still access *UpToDate* via your NHS OpenAthens account but can also register for *UpToDate Anywhere* and use the *UpToDate* app.

To sign up, please go to the OUH intranet home page -

<http://ouh.oxnet.nhs.uk> and click on *UpToDate* from the link on bottom

right hand side of the page in the "Clinical Resources" section. Then click on the "Login/Register" tab in the upper right hand corner of the *UpToDate* page. If you already have an account with *UpToDate*, then log in using your existing credentials. To create a new account, please register as a new user and create your username and password.

## New subscription to BMJ Best Practice – includes mobile app

We're pleased to announce that we now have a subscription to *BMJ Best Practice*, a resource that provides regularly updated research evidence with guidelines, and offers a step-by-step approach to clinical problems throughout the patient journey. Funding for a one year trial subscription has been generously provided by the Nuffield Oxford Hospitals Fund.

**BMJ** Best Practice

Your instant second opinion

You can access *BMJ Best Practice* from a University networked PC, or via NHS Open Athens at <http://bestpractice.bmj.com/>.

For more details, please see [www.bodleian.ox.ac.uk/nhs/bmj-best-practice](http://www.bodleian.ox.ac.uk/nhs/bmj-best-practice).

The *BMJ Best Practice* app is also available to download – this gives you access to the content offline. Once you've downloaded the app to your mobile device, log in with your credentials and enter the 'Institutional number' - please contact us at [hcl-enquiries@bodleian.ox.ac.uk](mailto:hcl-enquiries@bodleian.ox.ac.uk) for the code. More details about the app are available at <http://bestpractice.bmj.com/app>.

For more details, please see [www.bodleian.ox.ac.uk/nhs/bmj-best-practice](http://www.bodleian.ox.ac.uk/nhs/bmj-best-practice).