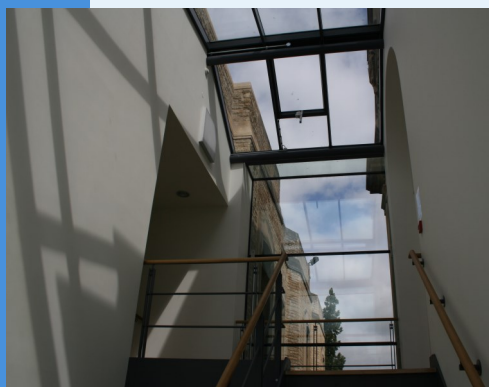


Welcome to Science and Medicine Dispatch, the monthly newsletter bringing you items of interest from the Science and Health Care Libraries of Oxford University. Subscribe by sending a blank email to [rsl-and-hcl-newsletter-subscribe@maillist.ox.ac.uk](mailto:rsl-and-hcl-newsletter-subscribe@maillist.ox.ac.uk), or contact [newsletter.rsl@bodleian.ox.ac.uk](mailto:newsletter.rsl@bodleian.ox.ac.uk). The newsletter can also be read online at [www.bodleian.ox.ac.uk/science/about/science-and-medicine-dispatch](http://www.bodleian.ox.ac.uk/science/about/science-and-medicine-dispatch)



### Opening Hours (Vacation)

Monday to Friday 8:30am-7pm

Saturdays 10am-2pm

Sundays closed

### Contacts

Radcliffe Science Library

Phone: 01865-272800

Email: [enquiries.rsl@bodleian.ox.ac.uk](mailto:enquiries.rsl@bodleian.ox.ac.uk)

Web: [www.bodleian.ox.ac.uk/science/](http://www.bodleian.ox.ac.uk/science/)

 @radcliffeslib

 Radcliffe Science Library

### What's new

#### • Closure of Special Collections Reading Room

The temporary Special Collections Reading Room at the RSL will close on 19th September and will relocate to the [Weston Library](#), reopening on 29th September.

#### • Welcome to Natasha Kennedy

A warm welcome to Natasha, our new Lending Services Supervisor at the RSL.

Natasha was previously the Bodleian Graduate Library Trainee at the English Faculty Library and a Library Assistant at the Social Science Library. As Lending Services Supervisor she is the main focus for Circulation enquiries, deals with [PCAS](#)

questions across the Bodleian Libraries and is part of development team for [SOLO](#). Natasha has an undergraduate degree in English with Psychology and a Masters in Victorian Literature, Art and Culture. She is currently studying for a Masters in Information and Library Studies at Aberystwyth University through distance learning.



Natasha Kennedy

#### Vesalius coming to RSL from Cairns

The Radcliffe Science Library will from mid-September be exhibiting a new edition of *De Humani Corporis Fabrica* (The Fabric of the Human Body), by Andreas Vesalius (1514 - 1564). This was purchased thanks to the generosity of donors, including the Friends of the Bodleian and Professor Alastair Buchan. It was previously on display in the Cairns Library at the John Radcliffe Hospital. Further information can be found at [www.bodleian.ox.ac.uk/science/news/vesalius-exhibit-at-the-rsl](http://www.bodleian.ox.ac.uk/science/news/vesalius-exhibit-at-the-rsl)



Image from *Fabrica*

### Farewell to Bob Wyatt

Bob Wyatt, RSL Collections Manager, retired on 31st July after 34 years service under four Keepers of Scientific Books (pictured below at his retirement send-off). Best wishes to Bob a long and happy retirement!



### Open Access news

- Details of HEFCE's Open Access policy for the post-2014 REF can now be found at <http://tinyurl.com/m8ra9s2>.
- John Fell-funded authors are now required to deposit articles in [ORA](#). Further details can be found on the John Fell Fund tab at <http://tinyurl.com/or46445>.
- Proceedings of the Bodleian Libraries Open Access monographs event on 18th June are now online at <http://tinyurl.com/kt4z771>.



From left to right: **Bob Wyatt**, former Keeper Peter Leggate, Keeper Alena Ptak-Danchak, former Keepers Judith Palmer and Dennis Shaw (seated), and Bodley's Librarian Richard Ovenden  
Photo credit: Marta Kucharska

## Opening Hours

### Cairns Library, John Radcliffe

Accessible 24 hours a day, 7 days a week

Staffed 9am-7pm Monday to Friday,  
10am-7pm Wednesday

### Knowledge Centre, Old Road Campus

Accessible 9am-6pm Monday to Friday  
Staffed 9am-6pm Monday to Friday,  
10:45am-6pm Wednesday

## Welcome to new Clinical Medicine students

We look forward to welcoming the new Fourth Year Clinical Medicine students and Graduate Entry Medicine students at their inductions in September.

There is a wide range of facilities available to our students, including:

- 24/7 access to the Cairns Library with your University Card.
- Bookable [Group Study Rooms](#) at both the Cairns Library and Knowledge Centre.
- Multiple copies of [Clinical Reading Lists](#) texts available in print, and online where available.
- [Laptop](#) and [iPad](#) lending service at both the Cairns Library and Knowledge Centre.



## Contacts

Phone:  
01865-221936

Email:

[hcl-enquiries@bodleian.ox.ac.uk](mailto:hcl-enquiries@bodleian.ox.ac.uk)

Web:

[www.bodleian.ox.ac.uk/medicine](http://www.bodleian.ox.ac.uk/medicine)

## Did you know.....

that all members of the Medical Sciences Division have access to over 1,500 online medical and health care textbooks from the Oxford University Press via [Oxford Medicine Online?](#)

You can also now use **the Oxford Index to search across All Books and Journals from Oxford University Press.**

The Oxford Index brings together reference, journals, and scholarly works in one search tool. It provides smart recommendations for related content - from journal articles and scholarly monographs, to reference content, primary sources, and more - based on your research interests. The Index is found at the bottom of the screen at <http://oxfordmedicine.com/>.



# MHL

Medical Heritage Library

## UK Medical Heritage Library project

The [Medical Heritage Library](#) (MHL), is a digital curation collaboration by some of the world's leading medical libraries. It was set up to promote free and open access to high quality resources in the history of medicine. The MHL's collection of digitized medical books, pamphlets, journals, and films now number tens of thousands, and include works from each of the past six centuries. All works are available through the Internet Archive and are in the public domain under US copyright law. See more at:

[www.medicalheritage.org/about/](http://www.medicalheritage.org/about/)

## Open Access Update Talk Now Online

Recorded by our colleagues in the Nuffield Department of Clinical Medicine, staff from the Bodleian Libraries discuss open access at Oxford University. Eli Harriss talks about the different routes to make published work open access and the policies required by different funding bodies, Juliet Ralph talks about the help and tools available to comply with open access policies and Sarah Barkla discusses the Oxford Research Archive.

[www.ndm.ox.ac.uk/open-access](http://www.ndm.ox.ac.uk/open-access)

About the speakers

- Eli Harriss is the Knowledge Centre Manager and Outreach Librarian, Bodleian Health Care Libraries
- Juliet Ralph is the Open Access Subject Librarian, Radcliffe Science Library
- Sarah Barkla is the Research Archive Librarian, Oxford Research Archive
- Questions can be sent to the general enquiries email at [open-access-enquiries@bodleian.ox.ac.uk](mailto:open-access-enquiries@bodleian.ox.ac.uk)

