



Welcome to Science and Medicine Dispatch, the monthly newsletter bringing you items of interest from the Science and Health Care Libraries of Oxford University. Subscribe by sending a blank email to rsl-and-hcl-newsletter-subscribe@maillist.ox.ac.uk, or contact newsletter.rsl@bodleian.ox.ac.uk.

The newsletter can also be read online at www.bodleian.ox.ac.uk/science/about/science-and-medicine-dispatch.

Edible Book Festival

The RSL's 4th Edible Book Festival takes place on Thursday 7 March to mark World Book Day. All members of the University are welcome to enter, or just to come along to view and eat the entries!

Here are some from last year:

(From left to right)

- Goodbye Mr Chips
- V for Vendetta
- Dune



Full details are at <http://blogs.bodleian.ox.ac.uk/science/2019/02/18/ebf19/>.

Open Access news

Open Access Oxford week - 4-8 March 2019

There's still time to book for some of our programme of events for Open Access Oxford Week 2019. Full details are at

<http://openaccess.ox.ac.uk/home-2/open-access-oxford-week-march-2019/>.



Open Access Oxford: what's happening?

The next of these regular briefing sessions will be held on Tuesday 12 March, 2-3pm, at the Bodleian Social Science Library.

Details and booking information are at

<https://libguides.bodleian.ox.ac.uk/workshops/OAO>.



Bodleian iSkills sessions for MSD researchers

These free workshops are aimed primarily at postgraduate students, researchers and university staff based on the Old Road Campus or in Medical Sciences Division departments elsewhere in Headington. All have multiple dates available.

• Introduction to Mendeley

This session will introduce you to Mendeley (www.mendeley.com) - a free programme which can help you to organise and retrieve your references and PDFs, cite references in documents and create bibliographies.

<https://libguides.bodleian.ox.ac.uk/workshops/MendeleyMedSci>

• Introduction to literature searching for DPhils and researchers in the Medical Sciences

In this practical workshop you will explore how to formulate search strategies to address research questions, choose appropriate databases, manage references and keep up to date with new research.

<https://libguides.bodleian.ox.ac.uk/workshops/LitSearchMedSci>

• Introduction to Endnote

An introduction to Endnote X9, which can help you to manage your references and PDFs, cite references and create bibliographies quickly and easily.

<https://libguides.bodleian.ox.ac.uk/workshops/EndnoteMedSci>



Parks College

A new graduate college on the Radcliffe Science Library site

Further details of this project are now online at

www.ox.ac.uk/about/organisation/future-projects-parks-college.



RSL opening hours

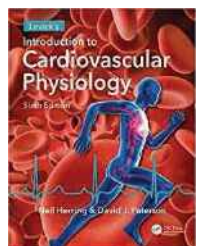
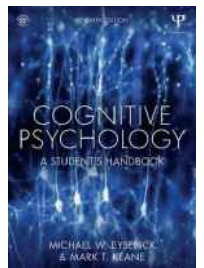
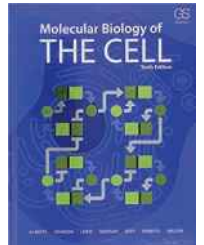
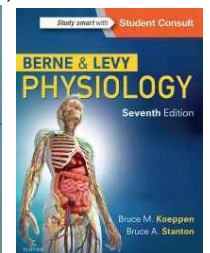
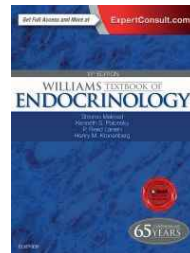
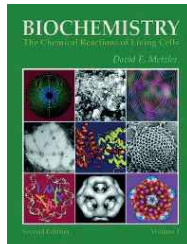
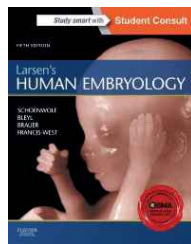
Vacation opening hours will start at the RSL on Monday 11 March. We will be open 8.30am to 7pm on weekdays and 10am to 2pm on Saturdays. Please note the earlier closing time on weekdays, and also that we will be closed on Sundays. Full details of our opening hours can be found at www.bodleian.ox.ac.uk/science/about/hours.

Easter reading

Getting ready to go home for Easter Vacation with too much to carry? Think e-books! If your list contains the following titles, you can access the electronic version from SOLO.

- Bruce Alberts. (2015). Molecular biology of the cell (Sixth ed.). New York, New York.
<http://tinyurl.com/Alberts6thed>
- Eysenck, M., & Keane, M. (2015). Cognitive psychology :A student's handbook(Seventh ed.). Hove, England ; New York, New York.
<http://tinyurl.com/EysenckKeane7thed>
- Herring, N., & Paterson, D. (2018). Levick's introduction to cardiovascular physiology (Sixth ed.). Boca Raton ; London ; New York.
<http://tinyurl.com/Levick6thed>
- Koeppen, B., & Stanton, B. (2018). Berne & Levy physiology (Seventh ed.).
<http://tinyurl.com/BerneLevy7thed>
- Meisenberg, G., & Simmons, W. (2016). Principles of medical biochemistry (Fourth ed.). Philadelphia, PA.
<http://tinyurl.com/MeisenbergSimmons4thed>
- Melmed, S., Polonsky, K., Larsen, P., Kronenberg, H., & Williams, R. (2016). Williams textbook of endocrinology(Thirteenth ed.). Philadelphia, PA.
<http://tinyurl.com/Williams13thed>
- Metzler, David E. (2001). Biochemistry: The Chemical Reactions of Living Cells (Second ed.).
<http://tinyurl.com/Metzler2nded>
- Schoenwolf, G., Bleyl, S., Brauer, P., & Francis-West, P. (2015). Larsen's human embryology (Fifth ed.). Philadelphia, PA.
<http://tinyurl.com/Larsen5thed>

For other titles, check SOLO (<http://solo.bodleian.ox.ac.uk>) and refine to **Books and Online Resources**.



Radcliffe Science Library

Phone: +44 1865 272800

Email: enquiries.rsl@bodleian.ox.ac.uk

Web: www.bodleian.ox.ac.uk/science

Twitter: [@radcliffescilib](https://twitter.com/radcliffescilib)

Facebook: [Radcliffe Science Library](https://www.facebook.com/RadcliffeScienceLibrary)

Bodleian Health Care Libraries

Phone: 01865 221936

Email: hcl-enquiries@bodleian.ox.ac.uk

Web: www.bodleian.ox.ac.uk/medicine

Opening Hours

Weekdays 8.30am-10pm

Saturdays 10am-4pm, Sundays 11am-5pm.

(Vacations: Weekdays 8.30am-7pm,
Saturdays 10am-2pm, Sundays - closed)

Opening Hours at BHCL

For opening hours at the following sites, please see our website:

- Cairns Library, John Radcliffe
- Knowledge Centre, Old Road Campus
- Nuffield Orthopaedic Centre Library
- Horton General Hospital Library