



Science Dispatch

May 2011

Contacts

Radcliffe Science Library
Phone: 01865-272800
Email: enquiries.rsl@bodleian.ox.ac.uk
Web: www.bodleian.ox.ac.uk/science/

FOLLOW US ON **twitter**

Find us on **Facebook**

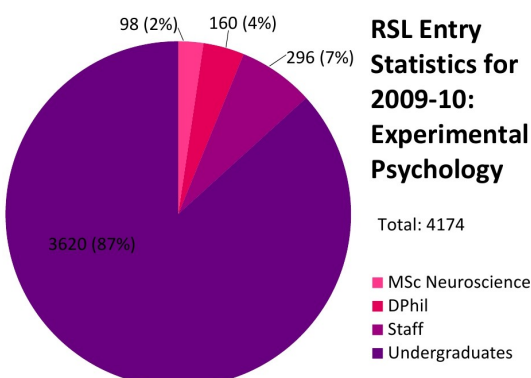
Opening Hours (Trinity)
Monday -- Friday
8:30am -- 10pm
Saturdays 10am -- 4pm
Sundays 11am -- 5pm
Bank Holiday May 30th
9am -- 7pm

Sir Mark Walport lecture

On April 19th Sir Mark Walport, Director of the Wellcome Trust, gave a lecture at the Bodleian on 'The role of open access in maximizing the impact of biomedical research', in which he advanced the view that open access is not a threat and appealed to academics to take control over the dissemination of their own work. A podcast of the lecture is at: <http://mediapodcasts.ox.ac.uk/bodlib/bodcast/2011-04-20-mark-walport-open-access.mp3>

Focus on Experimental Psychology

The [Experimental Psychology Department](#) has 17 laboratories investigating mind and behaviour in normal and abnormal development. Department has 120 permanent staff, and admits 80 new undergraduates, 50 new postgraduates and 10 to 15 new researchers every year. The RSL supplies multiple copies of reading list books and access to



several key e-textbooks, Blackwell Reference Online, and key psychology e-journals. Postgraduates and academic staff can search psychological literature and keep up to date with PsycINFO, Cambridge Sociological Abstracts, SCOPUS and Web of Science. Training sessions are timetabled with the Undergraduate teaching programme, and provided on demand. The Subject Librarian for Experimental Psychology is Karine Barker (karine.barker@bodleian.ox.ac.uk, phone +44 1865 272802)



Karine Barker

Welcome to the monthly newsletter bringing you items of interest from the Science and Medicine Libraries of Oxford University. Please send your comments and questions to:

newsletter.rsl@bodleian.ox.ac.uk

The newsletter can also be read online at

<http://www.bodleian.ox.ac.uk/science/libraries/science-and-medicine-dispatch>

What's new

ORA survey

The Bodleian Libraries is running a survey to find out what Oxford researchers think about open access and how they use ORA (Oxford University Research Archive).

https://www.survey.bris.ac.uk/oxford/open_access

New LibGuide for bibliometrics

Our new guide to citation tracking, measures and tools is now online.

<http://ox.libguides.com/bibliometrics>

113 years of Psychology at Oxford

From 22 June the RSL will present an exhibition to mark the 150th anniversary of the publication of Gustav Fechner's *Elemente der Psychophysik*.

www.bodleian.ox.ac.uk/science/news/2011may04_01

Royal Society Launches Open Biology

Focusing on cellular and molecular aspects of biology, this is the Royal Society's first wholly open access, online-only journal.

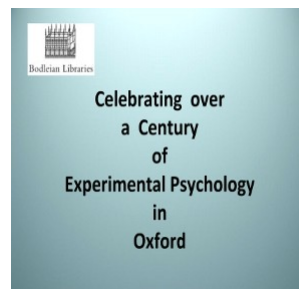
<http://royalsociety.org/news/Royal-Society-launches-groundbreaking-new-journal/>

Mobile Services

Access library services on your mobile at <http://m.ox.ac.uk/library/>

Other mobile services available include:

- Science <http://m.sciencemag.org/>
- PubMed Mobile www.ncbi.nlm.nih.gov/m/pubmed/
- ScienceDirect and Scopus www.info.sciverse.com/sciverse-mobile-applications
- RefWorks www.refworks.com/content/products/refmobile/content.asp



open
Biology





Medicine Dispatch

May 2011

Contacts

Phone: 01865-221936

Email:

hcl-enquiries@bodleian.ox.ac.uk

Web:

www.bodleian.ox.ac.uk/medicine

Opening Hours

Cairns Library, John Radcliffe

Accessible 24 hours a day,

7 days a week

Staffed 9am-7pm Monday to

Friday, 10am-7pm Wednesday

Knowledge Centre,

Old Road Campus

Accessible 9am-6pm Monday to

Friday

Staffed 9am-6pm Monday to Fri-

day, 10:45am-6pm Wednesday

Key Resource -

Sci59 Online career tool

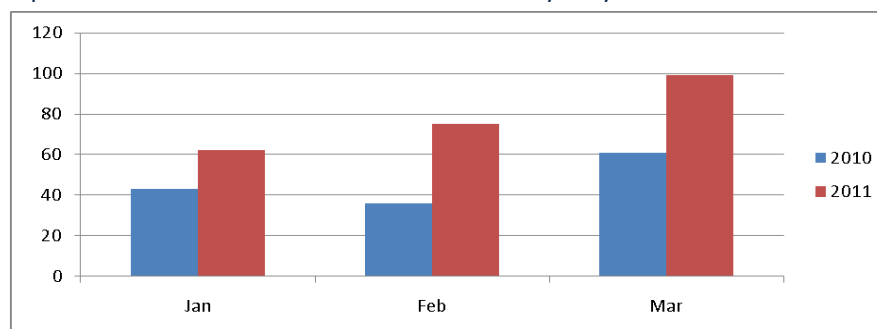
Produced by the Open University, Sci59 Online is an online questionnaire based on the skills and attributes that consultants believe are critical to success in their field. It is designed to help foundation year doctors and medical students see how their skills, attitudes, preferences and aspirations map against fifty nine specialties. Usernames and passwords are available from the library. For more information take a look at our Sci59 LibGuide -

<http://libguides.bodleian.ox.ac.uk/>



Outreach Librarians' Searching Scales New Heights

So far this year we have seen a dramatic increase in the number of searches undertaken by our Outreach Librarians. Between January and March this year our team have delivered 236 searches - an increase of 68% on the same period last year and equivalent to well over 475 hours of time saved by busy clinical and research staff.



Our Outreach Team works with the staff of the clinical departments in the Division and the ORH Trust. For more information about our outreach services take a look at

www.bodleian.ox.ac.uk/medicine/services/outreach_librarians

New e-books for medical students

Following feedback from students that we need to make our book collections more accessible, we are now buying electronic versions of some medical text books.

Benefits of E-Books include :

- E-books are always available at your desktop: No need to visit a library and/or wait for books to be returned.
- E-books are searchable: You can enter a search term and go straight to the information you need.
- E-books are portable: You can carry hundreds of books on a laptop or e-book reader.

The first titles that are available now via SOLO are :

- [The eye in clinical practice](#) (Frith)
- [Pocket consultant – gastroenterology](#) (Travis et al)
- [The renal system at a glance](#) (O'Callaghan)

We'll be buying more e-books over the next two months including key titles from the Clinical Students' reading lists. These will be available from SOLO via the user-friendly interface EBL (Ebook Library). We will let students know as titles become available.

For Clinical Reading Lists with live links to the catalogue please go to:

www.bodleian.ox.ac.uk/medicine/libraries/catalogues/clinical_reading_list

Key Resource - Clinical Evidence

BMJ Publishing describes their online resource *Clinical Evidence* as, "one of the world's most authoritative medical resources for informing treatment decisions and improving patient care". It aims to facilitate informed decisions by summarising the current state of knowledge and describes the best available evidence from systematic reviews, RCTs and observational studies. Clinical Evidence is available via to all members of the University via OxLIP+ (<http://libguides.bodleian.ox.ac.uk/oxlip-plus>) and to all members of the ORH Trust by logging in with NHS Athens at <http://clinicalevidence.bmj.com/>.

