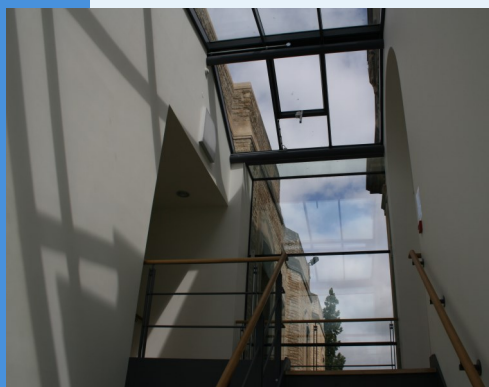


Welcome to Science and Medicine Dispatch, the monthly newsletter bringing you items of interest from the Science and Health Care Libraries of Oxford University. Subscribe by sending a blank email to rsl-and-hcl-newsletter-subscribe@maillist.ox.ac.uk, or contact newsletter.rsl@bodleian.ox.ac.uk. The newsletter can also be read online at www.bodleian.ox.ac.uk/science/about/science-and-medicine-dispatch



Opening Hours (Term)

Monday to Friday 8:30am-10pm

Saturdays 10am-4pm

Sundays 11am-5pm

Contacts

Radcliffe Science Library

Phone: 01865-272800

Email: enquiries.rsl@bodleian.ox.ac.uk

Web: www.bodleian.ox.ac.uk/science/



@radcliffescilib



Radcliffe Science Library

New Tylor Librarian for Anthropology

Sue Bird, the Bodleian Libraries Subject Librarian for Geography, Earth and Environmental Sciences, is now the Tylor Librarian for Anthropology in addition to her existing responsibilities. As such, she is still based at the RSL but is now in overall charge of the Tylor Library (www.bodleian.ox.ac.uk/anthropology).



What's new

• Impacts display

The RSL has a new display in the Entrance Hall showcasing the research carried out by the departments we serve. It uses a number of 'Oxford Impacts' case studies and links this with the support the RSL provides to researchers.

• Bank Holiday opening hours

The RSL will be open 8.30am-7pm on Monday 25th May.

• New EPSRC research data policy framework now in effect

From 1st May, The EPSRC expects research data from projects it funds to "be made freely and openly available with as few restrictions as possible". For more details, see www.epsrc.ac.uk/about/standards/researchdata/.

• QR codes

The QR codes provided throughout the RSL have been refreshed, making the notices more visual and providing more information 'at point of need'. Some of the notices now provide contact links to specific Subject Librarians.

EPSRC

Engineering and Physical Sciences
Research Council

2020 Vision: Making your research output compliant

On 21st April, researchers and graduate students from all divisions of the University gathered at Keble College for *2020 Vision: Making Your Research Output Compliant*. This afternoon workshop featured eight speakers representing HEFCE, the Bodleian Libraries, the Digital Curation Centre, CERN, Europe PMC and ArXiv.

Topics covered included the challenges of the 2020 REF, the Horizon 2020 EU Research and Innovation programme, compliance with REF and funder requirements for Open Access and open data, repositories for data and publications, and the support available to researchers at Oxford.

The workshop was organised by the Bodleian Libraries and supported by a grant from the FOSTER project (www.fosteropenscience.eu/project/) and by Keble College.

The presentations are now online at www.bodleian.ox.ac.uk/science/2020-vision

Many thanks to all our speakers and all who took the time to attend - we hope you found it useful.



Opening Hours

Cairns Library, John Radcliffe

Accessible 24 hours a day, 7 days a week

Staffed 9am-7pm Monday to Friday,
10am-7pm Wednesday

Knowledge Centre, Old Road Campus

Accessible 9am-6pm Monday to Friday

Staffed 9am-6pm Monday to Friday,
10:45am-6pm Wednesday

Contacts

Phone: 01865-221936

Email: hcl-enquiries@bodleian.ox.ac.uk

Web: www.bodleian.ox.ac.uk/medicine

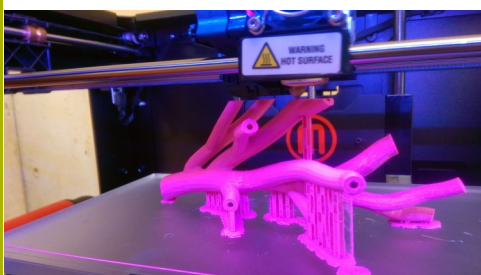
Late May Bank Holiday

The **Cairns Library** will be open but **unstaffed** on Monday 25th May (24 hour access is available at the Cairns Library for all library members)

The **Knowledge Centre** will be **closed** on Monday 25th May.

3D printing at the RSL

The Radcliffe Science Library now offers a 3D printing service for students and researchers. Intricate and highly customised objects can be produced using Computer Aided Design (CAD) software or by scanning existing objects. The service is available to all members of the University and further details can be found on the 3D printing LibGuide - <http://ox.libguides.com/3dprintingscanning>.



Bronchi 3D model

Bodleian iSkills Sessions Trinity 2015

Bodleian iSkills is a series of free workshops designed to help you make effective use of scholarly publications and other materials in print and online. We cover: searching for scholarly materials, reference management, keeping up to date, measuring impact, and submitting your thesis to the Oxford Research Archive.

We can also deliver all of these training sessions and many more in your department or at other locations across the Headington hospitals, the Old Road Campus, and associated sites.

Please contact hcl-enquiries@bodleian.ox.ac.uk to discuss or to arrange a session.

Highlights of iSkills sessions in Trinity term include:

- **RefWorks for your Laptop**
Wednesday 13th May 9.30am-12.30pm
Jesus College Ship Street Centre (next to the News Cafe)
Book online at <https://courses.it.ox.ac.uk/detail/TDBL>
- **Getting information to come to you**
Friday 15th May 9.15-10.45am
Keeping up to date with new research is important but time consuming! This session will show you how to set up automatic alerts so that you are notified about new articles and other publications and when key web sites are updated.
IT Services, Banbury Road
Book online at <http://courses.it.ox.ac.uk/detail/TZD20>
- **Mendeley for reference management**
Tuesday 2nd June 9.30am-12.15pm
IT Services, Banbury Road
Book online at <http://courses.it.ox.ac.uk/detail/TZWL2>
- **Research impact - citation analysis tools**
Wednesday 3rd June 10.30am-12pm
An introduction to citation tracking and bibliometrics, using a range of 'impact factor' tools to find top journals and conferences, count citations and measure the impact of publications and researchers.
Venue: Radcliffe Science Library
Book online at <http://courses.it.ox.ac.uk/detail/TZD24>
- **Open Access Oxford: what's happening?**
Wednesday 10th June 12-1pm
Jesus College, Ship Street Centre (next to the News Cafe)
Book online at <https://courses.it.ox.ac.uk/detail/TZW7>

More information on these and other forthcoming iSkills sessions can be found at <http://tinyurl.com/bodleianiskills>.

BODLEIAN iSkills