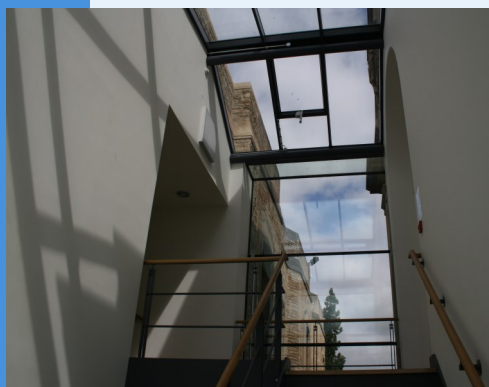


Welcome to Science and Medicine Dispatch, the monthly newsletter bringing you items of interest from the Science and Health Care Libraries of Oxford University. Subscribe by sending a blank email to rsl-and-hcl-newsletter-subscribe@maillist.ox.ac.uk, or contact newsletter.rsl@bodleian.ox.ac.uk. The newsletter can also be read online at www.bodleian.ox.ac.uk/science/about/science-and-medicine-dispatch



The first issue of Science and Medicine Dispatch was published in November 2010

Here are some of the developments and improvements covered over the last 4 years.

Saving your time

Deliveries of items held in offsite storage now take place on Saturdays as well as weekdays. In 2013, we also introduced a book drop for readers to return borrowed books when the library is closed.



RSL book drop

Opening Hours (Term)

Monday to Friday 8:30am-10pm

Saturdays 10am-4pm

Sundays 11am-5pm

Flexible and comfortable workspaces

In 2012, we opened the [Hive](#), as a consultation space for readers to meet with their [Subject Librarians](#). In 2013, we also installed whiteboard tables in some parts of the upper floors to enable collaborative working. More recently, the [RSL Space Survey](#) has given us invaluable feedback to remodel public areas to serve readers' needs better. We have also recently provided cushions for readers' use, and our plants have benefitted from care from Keble College's garden staff.



The Hive

Contacts

Radcliffe Science Library

Phone: 01865-272800

Email: enquiries.rsl@bodleian.ox.ac.uk

Web: www.bodleian.ox.ac.uk/science/

 @radcliffescilib

 Radcliffe Science Library

The Future

We are consistently looking to develop our services further. We always welcome your feedback - there are several ways to get in touch:

- Use the Comments book or Suggestions box in the RSL Entrance Hall, or speak to staff at the Enquiry Desk.
- Email us at enquiries.rsl@bodleian.ox.ac.uk.
- We are on Twitter [@radcliffescilib](https://twitter.com/radcliffescilib) and on [Facebook](#) as Radcliffe Science Library.
- Contact your [Subject Librarian](#).

New Technologies

In 2010, we introduced lending of [e-readers](#) loaded with scientific content. In 2011, we launched [iPad](#) lending and set up [QR codes](#) throughout the RSL to help readers navigate.

In 2013, Ollie Bridle, our Biology Subject Librarian, was instrumental in developing [Library Assistant](#), a guide to the Bodleian Libraries for mobile devices.

Recently we launched our [3D printing service](#), which has already proved popular with readers working on a wide range of projects.



Engagement with the scientific community

The [Parallel Universe](#) poetry competition, which we have now run twice and will repeat in future, attracts wide interest and many thought-provoking entries. We also have a regularly-refreshed display of research posters in the RSL Entrance Hall.



Opening Hours

Cairns Library, John Radcliffe

Accessible 24 hours a day, 7 days a week

Staffed 9am-7pm Monday to Friday,
10am-7pm Wednesday

Knowledge Centre, Old Road Campus

Accessible 9am-6pm Monday to Friday

Staffed 9am-6pm Monday to Friday,
10:45am-6pm Wednesday

Contacts

Phone: 01865-221936

Email: hcl-enquiries@bodleian.ox.ac.uk

Web: www.bodleian.ox.ac.uk/medicine

Changes to Research and Publishing – Open Access

In the April 2013 edition we described the rapid changes to academic publishing as a result of the

[Finch Report](#), and the UK

Government and RCUK initiatives

bringing in new funding mechanisms

and requirements. Since then BHCL,

along with our colleagues throughout

the Bodleian Libraries have helped our

users make sense of “Going Gold” and

“Going Green” and continue to work

with researchers getting to grips with

[Open Access](#)

publishing.



Technology

Technology has also changed at a rapid pace, and in 2011 we introduced an [iPad lending scheme](#) from the Cairns Library or Knowledge Centre. Many of the first users of this service

had never used or owned a tablet or

touchscreen device,

a very different

scene to now

where it feels like

they're everywhere!



Bodleian Health Care Libraries

We have been delivering services to the University and NHS for nearly 50 years and we are based on two sites – the Cairns Library at the John Radcliffe and the Knowledge Centre at the Churchill Hospital. Looking back the previous editions of Medicine Dispatch it's been interesting to see how things have changed:

Resources

In 2010 we trialled an online collection of **OUP Medical Handbooks**, and after the

success of this announced our subscription to 12 titles in the first issue of Medicine Dispatch. Fast forward to now, and all members of the Medical Sciences Division and the OUH Trust have access to over 1,500 online medical and health care textbooks from the Oxford University Press via [Oxford Medicine Online](#), and much more from OUP and other publishers in addition to a growing number of electronic journals and other resources.

OXFORD MEDICINE ONLINE

Our Space

The summer of 2012 saw refurbishments and improvements to the space in the Cairns Library and Knowledge Centre. The Knowledge Centre underwent a change of layout including a new Group Study Room. The Cairns Library benefitted from a new Book Collection room, improved study spaces and desks, and a new carpet. As usual with these projects they didn't run *entirely* to schedule, but the patience of our users was rewarded with much more pleasant spaces to work and study!



New Book Collection Room
- Cairns Library



Group Study Room -
Knowledge Centre

However, some things haven't changed..... continued support for users

In the first edition of Medicine Dispatch we publicised our team of **Outreach Librarians** and the range of services they provided, including conducting literature searches, support for research bids, support for systematic reviews, help with reference management and setting up automated current awareness services to help keep you up to date. We're pleased to say that our team continues to develop our services to support all our library users.