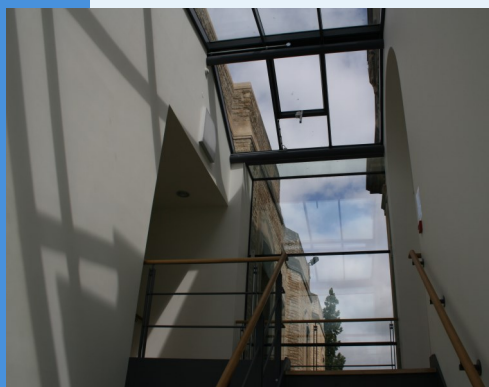


Welcome to Science and Medicine Dispatch, the monthly newsletter bringing you items of interest from the Science and Health Care Libraries of Oxford University. Subscribe by sending a blank email to rsl-and-hcl-newsletter-subscribe@maillist.ox.ac.uk, or contact newsletter.rsl@bodleian.ox.ac.uk. The newsletter can also be read online at www.bodleian.ox.ac.uk/science/about/science-and-medicine-dispatch



Opening Hours (Term)

Monday to Friday 8:30am-10pm

Saturdays 10am-4pm

Sundays 11am-5pm

Contacts

Radcliffe Science Library

Phone: 01865-272800

Email: enquiries.rsl@bodleian.ox.ac.uk

Web: www.bodleian.ox.ac.uk/science/



@radcliffeslib



Radcliffe Science Library

What's new

• iSkills sessions coming up

- E-books (Friday 21st November 9.15-10.30am)
- E-book Readers (Friday 21st November 10.45am-12.15pm)
- Mendeley for Reference Management (Friday 28th November 9.15am-12.15pm)

See <http://tinyurl.com/dxhguwq> for more details and other sessions.

• Oxford Martin School seminars

This term's seminar series is Health in the 21st century: what's new?

Details are at: <http://www.oxfordmartin.ox.ac.uk/event/1926>.

• New bus service

The Oxford Bus Company has launched a new service connecting the Science Area with the John Radcliffe. Details are at:

<http://city.oxfordbus.co.uk/city600/>.

• Research Skills Toolkit

This is a free 2-hour hands-on workshop for graduate researchers in MPLS. Workshops take place on Tuesday 20th January and Friday 23rd January 2015. See more at: <http://tinyurl.com/pw6avg2>.

BODLEIAN i-Skills

ORA-Data

ORA-Data will go live on 1st December.

ORA-Data is a data repository aimed at Oxford researchers who wish to deposit research data for long-term storage and accessibility, or have deposited data elsewhere and want a link to this. It extends the capability of the Oxford Research Archive (<http://ora.ox.ac.uk/>), which already acts as a searchable repository of theses and publications.

More information can be found at <http://tinyurl.com/k3y44su>



Stacks Unbound – Make day for library data

Following similar successful events at the British Library, developers, researchers, librarians, curators and readers are invited to come together for a day of using data sets and sources to explore and build things based on library catalogues or metadata. No experience required apart from a willingness to join in.

The 'Stacks Unbound' event will take place 9-5 on 22nd November at the Oxford e-Research Centre. For more details and links to online registration please see - <http://stacksunbound.wordpress.com/>

Open Access news

The presentations from **Open Access Week 2014** in Oxford are now online at:

<http://tinyurl.com/od6fw4s>

HEFCE's OA requirements take effect in relation to **articles and conference proceedings submitted for publication from 1 April 2016**. From that date onwards, journal articles and conference papers will be eligible to be submitted in the next REF only if HEFCE's OA conditions are met. Details of Oxford's plan's to assist researchers in meeting these requirements can be found at:

<http://tinyurl.com/mlbj4yc>



Opening Hours

Cairns Library, John Radcliffe

Accessible 24 hours a day, 7 days a week

Staffed 9am-7pm Monday to Friday,
10am-7pm Wednesday

Knowledge Centre, Old Road Campus

Accessible 9am-6pm Monday to Friday

Staffed 9am-6pm Monday to Friday,
10:45am-6pm Wednesday

Contacts

Phone:
01865-221936

Email:
hcl-enquiries@bodleian.ox.ac.uk

Web:
www.bodleian.ox.ac.uk/medicine

Research Skills Toolkit for Medical Sciences Division

This free **hands-on workshop** for research students is an opportunity to learn about a broad range of resources in one time-efficient 2-hour session.

The workshop focuses on the skills and tools that will streamline your academic work. You will encounter a variety of IT and Library tools and services to support your research. Relevant software and online services are on offer for you to try out. You will also meet with subject specialists for help and guidance on further training.

These workshops take place in **week 8 of Michaelmas** and **week 1 of Hilary** Term and are open to graduate researchers in the Medical Sciences.

Read more here and book your place at <http://tinyurl.com/p6ud4xc> – places are limited, book yours now.

Automatic library access for MScs and DPhils

If you're a current MSc or DPhil student within the MSD and want to use BHCL Libraries you now have library membership automatically added to your University card. No need to fill in any forms, your card will let you in at the Cairns Library or Knowledge Centre.



Ebola Outbreak:

Resources for researchers, medical professionals and the wider public

In response to the outbreak of the Ebola virus in West Africa, a number of organisations and publishers have made information freely accessible to the general public as well as researchers, medical professionals and policy makers working on the containment, treatment, and prevention of Ebola hemorrhagic fever.

Oxford University Press has made [50 articles from leading journals and online resources](#) freely available.

UpToDate has made the following topics on the Ebola virus disease freely available, and will update them as new information is reviewed:

- [Epidemiology, pathogenesis, and clinical manifestations of Ebola and Marburg virus disease](#)
- [Diagnosis and treatment of Ebola and Marburg virus disease](#)
- [Patient information: Ebola \(The Basics\)](#)

Elsevier is providing free access to medical research online and through mobile devices. This includes, for West Africa, free access to [ClinicalKey](#) for the next two months. For a full description of the programs and how to gain access see <http://tinyurl.com/mj35b7n>.

The majority of these resources are already available to MSD and OUH staff, however colleagues elsewhere may be interested in free access to these articles.



Remembering Radcliffe

The Bodleian Libraries' [winter exhibition](#) celebrates the life and legacy of John Radcliffe, a physician and philanthropist who had uncanny success in diagnosing and treating his patients, including Queen Anne, and on his death left the bulk of his fortune to charitable causes. The exhibition considers three buildings in the city which bear his name (the Radcliffe Infirmary, the Radcliffe Observatory and the Radcliffe Camera - the first circular library in Britain), and Radcliffe's ongoing legacy in the work of the [Radcliffe Trust](#) as it marks the 300th anniversary of his death.

