

Science Dispatch

April 2012

Contacts

Radcliffe Science Library

Phone: 01865-272800

Email: enquiries.rsl@bodleian.ox.ac.uk

Web: www.bodleian.ox.ac.uk/science/

FOLLOW US ON 

 Find us on Facebook

Opening Hours (Trinity)

Monday -- Friday

8:30am -- 10pm

Saturdays 10am -- 4pm

Sundays 11am -- 5pm

Innovative Oxford iBook available to try on RSL iPad

The [Oxford Internet Institute](http://www.oii.ox.ac.uk) recently published an interactive textbook for Apple Mac's iBook platform. '**Geographies of the World's Knowledge**' is not a regular e-book, instead it offers a range of interactive diagrams and animations to enhance traditional textbook content (www.oii.ox.ac.uk/news/?id=680). The whole book has been made available completely free of charge for anybody to download from the Apple iTunes store. If you want to see the textbook in action, you can do so by downloading it or by borrowing our library iPad on which we have installed the book. To find out more information about iPad loaning, visit our guide at <http://ox.libguides.com/ipad2>

Welcome to the monthly newsletter bringing you items of interest from the Science and Medicine Libraries of Oxford University. Please send your comments and questions to:

newsletter.rsl@bodleian.ox.ac.uk

The newsletter can also be read online at

<http://www.bodleian.ox.ac.uk/science/libraries/science-and-medicine-dispatch>

What's new

Bank Holiday opening hours

There will be 3 Bank Holidays in Trinity term:

- Early May Bank Holiday (Monday 7th May)
- Spring Bank Holiday (Monday 4th June)
- Queen's Diamond Jubilee Holiday (Tuesday 5th June)

The RSL will be open **9am-7pm** on each of these days. Full details of opening hours in the Science Libraries can be found at www.bodleian.ox.ac.uk/science/libraries/hours.

WISER sessions in Trinity term

Sessions coming up include **Getting information to come to you** and **RefWorks for Science and Social Science** - full details and booking information can be found at <http://ox.libguides.com/content.php?pid=289070&sid=2376530>



Training sessions for Trinity term

All the following sessions are to be held in the **RSL Training Room**.

- INSPEC 2nd May (12-1pm)
- Web of Knowledge/Web of Science 3rd May (12-1pm)
- RefWorks for Science and Technology 9th May (1-2pm)
- PsycINFO 10th May (12-1pm)
- Essential Science Indicators 16th May (12-1pm)
- JCR - Journal Citation Reports 23rd May (12-1pm)
- SciVerse SCOPUS for science 30th May (12-1pm)
- Patent Information 30th May (2-3pm)

Full details of the Research Skills Training Programme can be found at www.bodleian.ox.ac.uk/science/training/rsl-training-programme

Hive officially launched

April 17th saw the official launch of the Hive, the RSL's new suite of collaborative spaces for researchers to meet with Subject Librarians. For further enquiries or to make an appointment, email TheHive@bodleian.ox.ac.uk or contact your Subject Librarian. We can also offer support for the following in the Hive:

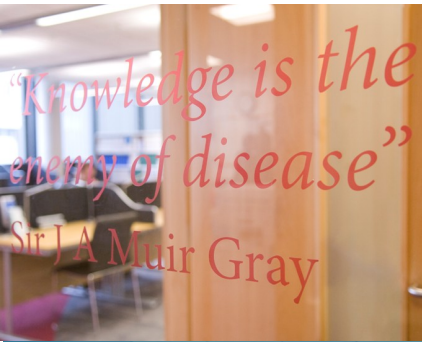
- Digital mapping and GIS
Contact maps@bodleian.ox.ac.uk
- ORA (Oxford Research Archive) for research publications and e-theses
Contact ora@bodleian.ox.ac.uk

More information about the Hive can be found at

www.bodleian.ox.ac.uk/science/services/areas/the-hive



Hive launch reception



Medicine Dispatch

April 2012

Contacts

Phone: 01865-221936
Email: hcl-enquiries@bodleian.ox.ac.uk
Web: www.bodleian.ox.ac.uk/medicine

Opening Hours

Cairns Library, John Radcliffe

Accessible 24 hours a day,
7 days a week
Staffed 9am-7pm Monday to
Friday, 10am-7pm Wednesday

Knowledge Centre, Old Road Campus

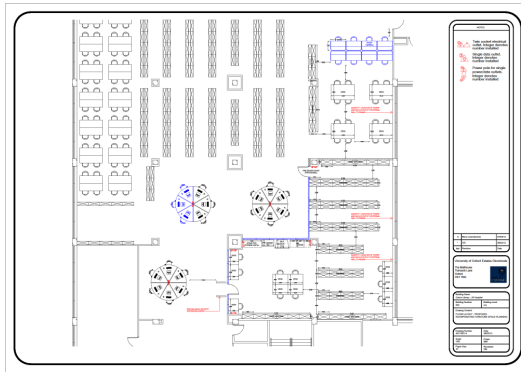
Accessible 9am-6pm Monday to
Friday
Staffed 9am-6pm Monday to
Friday, 10:45am-6pm Wednesday

Introduction to Reference Management Sessions

During March and April, a number of small group sessions introducing various reference management options were held in the **Knowledge Centre (KC)**. These were organised and presented by Eli Bastin, (KC Manager and Outreach Librarian) with other colleagues. The sessions lasted 1-1.5 hours, which gave participants ample opportunity to practice and ask questions. [EndNote](#), [EndNote Web](#), and [RefWorks](#) are available free via University wide licences or at a reduced price for personal computers. Further sessions will be advertised to the students and staff of the departments in Headington in the next few months - for further details contact Eli Bastin (eli.bastin@bodleian.ox.ac.uk)

Cairns Library Refurbishment

We will be building a new book collection area and improved quiet study and IT facilities in the Cairns Library over the summer. The work is scheduled to start on the 18th of June and to complete by the 1st of August. There will be some noise and disruption in the library over this period although we will try to keep this to a minimum. Please accept our apologies in advance for this. During the course of the works alternative quiet study facilities will be available in the Beeson Training Room. We may also be undertaking some refurbishment work at the Knowledge centre over the summer vacation. More information will follow when plans have been agreed.



New Cairns layout



Cairns computers

REF Support

Subject and Outreach Librarians for MSD have been helping with reference queries arising from the automatic searching of databases by the [Symplectic](#) system. If you have queries such as non-retrieval of papers or ways in which you could enhance your name-search strategy, your librarian will be able to assist you.

The Bodleian Libraries provides access to a very broad range of resources besides the major medical databases. The librarians can offer expertise in searching these resources in social and financial areas which can help in collecting evidence for impact statements for the [REF](#).

Contact your outreach/subject librarian in the Bodleian Health Care Libraries or the Radcliffe Science Library for REF support:

enquiries-hcl@bodleian.ox.ac.uk
enquiries.rsl@bodleian.ox.ac.uk

Key Resources – available via OxLIP+

[Clinical Evidence](#) is a collection of systematic reviews of over 3300 interventions in the context of over 670 clinical situations, based on thorough searches and appraisal of the literature. Each review uses the latest and most relevant research findings, and GRADE scores indicate the quality of the evidence presented.

[Transplant Library database](#) brings together the literature on all aspects of solid organ transplantation from Medline (Ovid) and the Cochrane Central database. Further information is added to each record by staff at the Centre for Evidence in Transplantation. The database includes more than 6,000 references to randomised controlled trials (RCTs) published from 1970 to present. It also includes records for non-indexed literature such as conference proceedings.

