



# Science Dispatch

April 2011

## Contacts

Radcliffe Science Library  
Phone: 01865-272800  
Email: [enquiries.rsl@bodleian.ox.ac.uk](mailto:enquiries.rsl@bodleian.ox.ac.uk)  
Web: [www.bodleian.ox.ac.uk/science/](http://www.bodleian.ox.ac.uk/science/)

FOLLOW US ON

Find us on Facebook

*Opening Hours (Trinity)*  
Monday -- Friday  
8:30am -- 10pm  
Saturdays 10am -- 4pm  
Sundays 11am -- 5pm

### **BANK HOLIDAY OPENING HOURS**

Tuesday 26th to Thursday 28th  
8.30am -- 7pm  
Friday 29th April 9am -- 5pm  
Saturday 30th April 10am -- 2pm  
Sunday 1st May CLOSED  
Monday 2nd May 9am -- 7pm

Welcome to the monthly newsletter bringing you items of interest from the Science and Medicine Libraries of Oxford University. Please send your comments and questions to:

[newsletter.rsl@bodleian.ox.ac.uk](mailto:newsletter.rsl@bodleian.ox.ac.uk)

The newsletter can also be read online at

<http://www.bodleian.ox.ac.uk/science/libraries/science-and-medicine-dispatch>

## What's new

Papers published in Nature in 2010

NPG Asia has unveiled a list of the 50 institutions which published the highest number of primary research papers in *Nature* titles in 2010  
<http://www.natureasia.com/en/publishing-index/global/>

Research Skills Training Programme

Coming up in May:

RefWorks for Science and Technology - 4 May 2011 at 1pm (RSL)

EndNote and EndNote Web - 18 May 2011 at 1pm (RSL)

To book a place e-mail: [courses.rsl@bodleian.ox.ac.uk](mailto:courses.rsl@bodleian.ox.ac.uk)

New LibGuide

*Core resources for Statistics and Probability* is now live.

<http://ox.libguides.com/statistics-resources>

E-books

Readers are reminded that the RSL has 3 E-book readers for loan.

<http://www.bodleian.ox.ac.uk/science/services/e-readers>

George Claridge Druce (1850 – 1932)

A presentation on the "Birthday Book" of the botanist will be held on 23 May

[http://www.bodleian.ox.ac.uk/science/news/2011apr27\\_01](http://www.bodleian.ox.ac.uk/science/news/2011apr27_01)



Amazon Kindle

## Finding e-books using SOLO

Links and records of e-books are added to SOLO. To find an e-book go to the search screen (<http://solo.bodleian.ox.ac.uk/>).

- Enter keywords (or a phrase in inverted commas).
- Choose 'Online Resources' (instead of "All libraries/collections") from the drop-down menu.
- Under "Refine My results" go to "Resource Type" and choose "Books".
- Click on "Online resource" under the title you want to open the e-book.



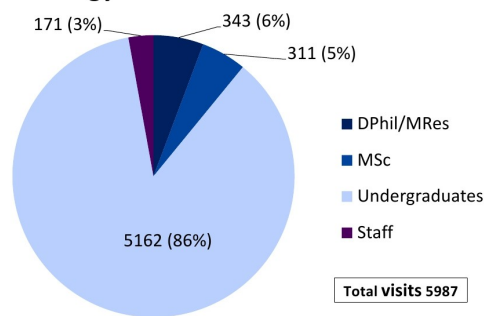
## Focus on Zoology

The [Zoology Department](#) dates from 1857 and was originally based in the [University Museum of Natural History](#). Today it has over 100 academic staff and research associates, around 120 DPhil students and over 300 undergraduates on the Biological Sciences degree program taught jointly with the [Plant Sciences Department](#).

The RSL provides access to key [resources](#) and provides information skills teaching to undergraduates, induction to graduates and small group or individual sessions on demand. Contact the Biology Subject Librarian, Judith Pinfold ([judith.pinfold@bodleian.ox.ac.uk](mailto:judith.pinfold@bodleian.ox.ac.uk)) for further information.

Currently based in the Department is the [Alexander Library of Ornithology](#), a specialist reference library whose extensive holdings include an archive of 19th and 20th century notebooks and diaries. It is closely linked to the [Edward Grey Institute of Field Ornithology](#). Visitors are welcome - contact Sophie Wilcox, Alexander Librarian ([sophie.wilcox@bodleian.ox.ac.uk](mailto:sophie.wilcox@bodleian.ox.ac.uk)).

### Zoology visits to the RSL in 2009-10





# Medicine Dispatch

April 2011

## Contacts

Phone: 01865-221936

Email:

[hcl-enquiries@bodleian.ox.ac.uk](mailto:hcl-enquiries@bodleian.ox.ac.uk)

Web:

[www.bodleian.ox.ac.uk/medicine](http://www.bodleian.ox.ac.uk/medicine)

### Opening Hours

#### Cairns Library, John Radcliffe

Accessible 24 hours a day,

7 days a week

Staffed 9am-7pm Monday to

Friday, 10am-7pm Wednesday

#### Knowledge Centre,

#### Old Road Campus

Accessible 9am-6pm Monday to

Friday

Staffed 9am-6pm Monday to Fri-

day, 10:45am-6pm Wednesday

## Resources of interest

Available via OxLIP+

**UpToDate** includes more than 7400 peer-reviewed topics, written by 3800 experts in their respective fields. Each review is linked to Medline abstracts and a complete drug information database. UpToDate is updated every four months. Please see our new LibGuide for more information:

<http://ox.libguides.com/uptodate>

**The Cochrane Library** is a source of evidence on the effectiveness of health care interventions. It includes systematic reviews and a register of controlled clinical trials. Our new LibGuide is at: <http://ox.libguides.com/cochranelibrary>



## Changes to Opening Hours over the Bank Holidays

### Cairns Library, John Radcliffe

Monday 2nd May - NOT STAFFED

### Knowledge Centre, Old Road Campus

Friday 29th April and Monday 2nd May - CLOSED

## Online tutorials for finding the evidence

Neal Thurley and Owen Coxall are developing a collection of online tutorials (screencasts) on finding the evidence. It is recommended that you watch the following tutorials in order.

Finding the Evidence 1: Using PICO to formulate a search question

Finding the Evidence 2: Turning search terms into a search strategy

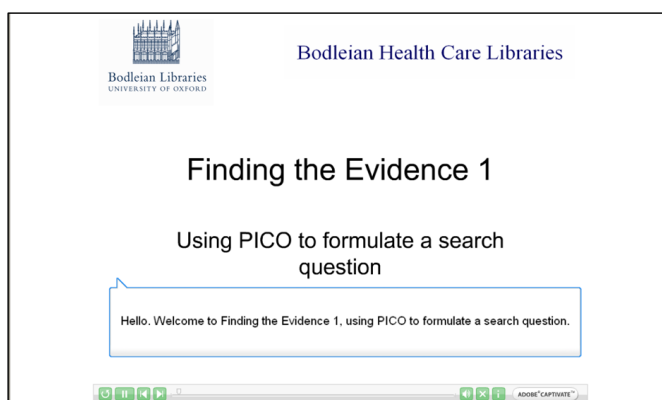
Finding the Evidence 3: Turning your search strategy into results: PubMed demonstration

Please see our website for more information and to download the screencasts:

[www.bodleian.ox.ac.uk/medicine/information\\_skills/screencasts](http://www.bodleian.ox.ac.uk/medicine/information_skills/screencasts)

Neal and Owen teach regularly for the Centre for Evidence Based Medicine (CEBM), who have endorsed these online tutorials on their site:

[www.cebm.net/index.aspx?o=1900](http://www.cebm.net/index.aspx?o=1900)



## New online guides for health care resources

We have developed our collection of online guides, which can be found amongst all Bodleian Libraries LibGuides at <http://libguides.bodleian.ox.ac.uk> and include:

- Clinical Medicine (general resources)
- Citing References (quick guide and FAQ for students and researchers)
- Clinical Evidence (BMJ collection of systematic reviews, available via OxLIP+)
- The Cochrane Library (systematic reviews produced by the Cochrane Collaboration)
- Sci59 Online (an online career tool for medicine students and Foundation Year doctors)
- UpToDate (full-text peer-reviewed topics, available via OxLIP+)

