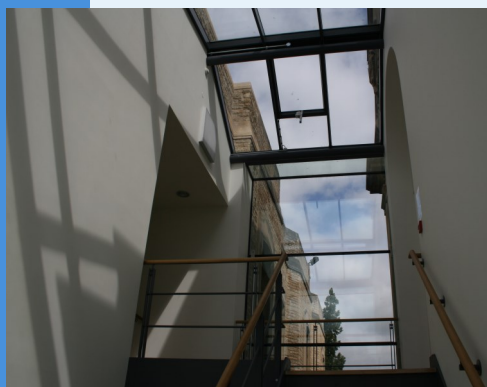


Welcome to Science and Medicine Dispatch, the monthly newsletter bringing you items of interest from the Science and Health Care Libraries of Oxford University. Subscribe by sending a blank email to rsl-and-hcl-newsletter-subscribe@maillist.ox.ac.uk, or contact newsletter.rsl@bodleian.ox.ac.uk. The newsletter can also be read online at www.bodleian.ox.ac.uk/science/about/science-and-medicine-dispatch



Opening Hours (Term)
Monday to Friday 8:30am-10pm
Saturdays 10am-4pm
Sundays 11am-5pm

Contacts

Radcliffe Science Library
Phone: 01865-272800
Email: enquiries.rsl@bodleian.ox.ac.uk
Web: www.bodleian.ox.ac.uk/science/

 @radcliffescilib

 Radcliffe Science Library

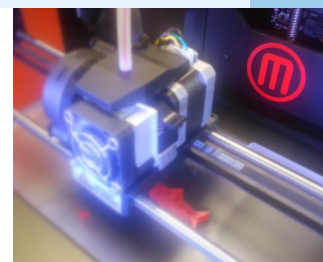


ETHOS Share My Thesis

Until 9th February, the British Library is running a competition inviting all PhD authors to tweet why their doctoral research is/was important, using the hashtag [#ShareMyThesis](https://twitter.com/ShareMyThesis). The competition is supported by Research Councils UK and Vitae. See <http://www.bl.uk/share-my-thesis/> for details.

What's new

- **Shedding light on Medieval manuscripts**
Raman spectroscopy allows the analysis of the pigments used to illuminate manuscripts in a non-contact, non-invasive way. **Professor Andrew Beeby** (Durham University) will give a talk on this topic in the Pusey Room at Keble College on Wednesday 25th February - details can be found at www.keble-asc.com/?id=-2091&cid=1517.
- **3D printer bring a Design/Object event**
6th March 10am-1pm and 2-5pm
RSL Entrance hall Lounge
See www.bodleian.ox.ac.uk/science/use/3d-printing for more information on 3D printing at the RSL.
- **Open Access news**
Oxford has signed up for a Wiley Open Access account, and HEFCE have published a report on monographs and Open Access. More details can be found at <http://openaccess.ox.ac.uk/news/>.



The RSL's 3D printer in action

Training sessions round-up

- **Research Information Training sessions coming up**
 - Research Impact and Open Access for Engineers and Computer Scientists, 10th February, 2:30-4pm
 - Research Impact and Open Access for Biologists, 12th February, 9.30-10.30am
 - Finding Research Information for Mathematics (DPhil students), 18th February, 2-3.30pmSee www.bodleian.ox.ac.uk/science/training/research-information-training.
- **Bodleian iSkills sessions in February**
 - Finding and Converting Geospatial Data, 12th February 2-5pm
 - Finding Stuff - Scholarly Literature for your Research, 17th February 2-5pm
 - Tech Tools - Reference Management, 18th February 2.15-5pm
 - RefWorks for Sciences and Social Sciences, 20th February 9.15am-12.15pm
 - Getting Information to come to you, 23rd February 10.30am-12pm
 - Mendeley for Reference Management, 27th February 9.15am-12.15pmDetails can be found at <http://libguides.bodleian.ox.ac.uk/workshopsbydate>.

**BODLEIAN
iSkills**
Workshops in information discovery
and scholarly communications

Opening Hours

Cairns Library, John Radcliffe

Accessible 24 hours a day, 7 days a week

Staffed 9am-7pm Monday to Friday,
10am-7pm Wednesday

Knowledge Centre, Old Road Campus

Accessible 9am-6pm Monday to Friday
Staffed 9am-6pm Monday to Friday,
10:45am-6pm Wednesday

Contacts

Phone: 01865-221936

Email: hcl-enquiries@bodleian.ox.ac.uk

Web: www.bodleian.ox.ac.uk/medicine

Medical Students – preparing for life after Oxford

If any final year students would like a brief introduction to NHS online resources (databases, online journals, ebooks, etc, and how to get access to them) then please contact us. We can arrange one-to-one or small group sessions with our Outreach Librarians. To arrange a session just contact us at hcl-enquiries@bodleian.ox.ac.uk.

Extended Loans Service for students on elective

Due the difficulties of returning books and possible internet access problems, Bodleian Health Care Libraries can extend the borrowing period for students before they leave for a clinical attachment or elective away from Oxford. Please note that you need to ask library staff to do this ***BEFORE YOU GO*** as we can't renew books that have been reserved by others. You can extend your loans by contacting us:

- In person
- By email: hcl-renewals@bodleian.ox.ac.uk
- By phone: (2)21936

Reference management sessions coming up

We will be holding **hour-long, introductory sessions on Endnote and Mendeley** in the **Knowledge Centre's meeting room** in February. These reference management tools help you to store, organise and retrieve references and articles, as well as cite references in documents and create bibliographies.

ENDNOTE X7 session:

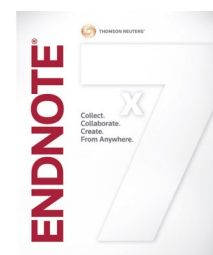
- 11am Tuesday 10th February

MENDELEY session:

- 11am Thursday 12th February

To sign up for a session or for more information, please email eli.harriss@bodleian.ox.ac.uk.

Additional sessions can be provided at the Cairns Library for small groups or individuals, contact hcl-enquiries@bodleian.ox.ac.uk.



RSL Space Survey - results

Last Trinity Term we invited readers to complete a questionnaire about the Radcliffe Science Library's physical space, with a chance to win a £20 Amazon voucher. We asked them what they like and dislike about the RSL's current use of space, what their favourite (and least favourite) areas are and why, and for their comments on ideas for improvements. We also asked their subject area, how often they visit the library and why.

407 responses were received. The responses have now been analysed and are available on the RSL website at

www.bodleian.ox.ac.uk/science/news/space-survey-2014.

Many thanks to all who completed the survey.

Hugh Cairns, William Osler and the Bodleian Health Care Libraries

The Cairns Library is named after Sir Hugh Cairns, who was the first Nuffield Professor of Surgery and a key figure in the development of neurosurgery as a speciality, the formation of the University of Oxford Medical School, and the treatment of head injuries during the Second World War.

We have recently updated our bibliographies (downloadable as PDFs) of journal articles, books, and other items by and about Sir Hugh Cairns - see <http://tinyurl.com/qhbd9fr>.

We are also currently working through some older books in our collection, and have discovered some interesting items including a letter from William Osler, which has been scanned and is available at <http://tinyurl.com/oslerletter>.



Sir Hugh Cairns

Photo courtesy of the Wellcome Library, London