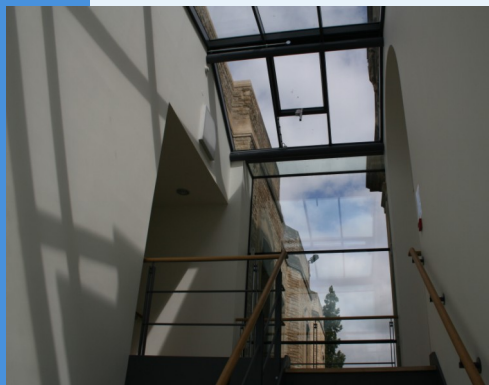


Welcome to Science and Medicine Dispatch, the monthly newsletter bringing you items of interest from the Science and Health Care Libraries of Oxford University. Subscribe by sending a blank email to rsl-and-hcl-newsletter-subscribe@maillist.ox.ac.uk, or contact newsletter.rsl@bodleian.ox.ac.uk. The newsletter can also be read online at www.bodleian.ox.ac.uk/science/about/science-and-medicine-dispatch



Opening Hours (Term)

Monday to Friday 8:30am-10pm

Saturdays 10am-4pm

Sundays 11am-5pm

Contacts

Radcliffe Science Library

Phone: 01865-272800

Email: enquiries.rsl@bodleian.ox.ac.uk

Web: www.bodleian.ox.ac.uk/science/



@radcliffescilib



Radcliffe Science Library

Legal deposit

As a legal deposit library, the Bodleian Libraries are entitled to receive a copy of all printed works published in the UK.

Since 2013, this has been extended to electronic works and the archiving of UK websites, coordinated by the British Library.

Details of the Bodleian Libraries legal deposit arrangements can be found at <http://tinyurl.com/p2va68a>.

Information on how to search and access electronic legal deposit material via SOLO can be found at <http://tinyurl.com/cv42anl>.

BRITISH
LIBRARY

What's new

• Vacation opening hours

Vacation opening hours start at the RSL on Monday 17th March. We will be open 8.30am-7pm Monday-Friday, 10am-2pm Saturday and closed Sunday.

• Vacation loans

Lending of books for the vacation starts on Monday 10th March. Loans will be due back Tuesday 29th April (Tuesday of 1st week Trinity).

• WISER sessions coming up

- Open Access: MOOCS and Open Educational Resources Thursday 6th March 2-3pm, RSL Entrance Hall Lounge

Book at <http://courses.it.ox.ac.uk/detail/TZ004>

- RefWorks for Sciences and Social Sciences Friday 7 March 9.15am-12.15pm, IT Services

Book at <http://courses.it.ox.ac.uk/detail/TDBL>

More details of upcoming WISER sessions can be found at <http://libguides.bodleian.ox.ac.uk/workshopsbydate>

• RSL space survey

In Trinity Term the RSL will be conducting a survey to improve the use of space within the building. Give us your views and win an Amazon voucher!



SciELO Citation Index

The SciELO Citation Index is now enabled in Web of Science. This covers nearly 650 titles and over 4 million cited references from Latin America, Spain, Portugal, the Caribbean and South Africa. Further details can be found at <http://wok.mimas.ac.uk/news/2014/20140214.html>

In memory of Rose Versfeld

Readers will be sad to learn of the death of Rose Versfeld, Circulation Desk Supervisor at the Hooke and Radcliffe Science Libraries for over 20 years. Rose's daughters Tasha and Melanie are doing the Moonwalk to raise money for breast cancer in memory of our lovely colleague.

Here's the link for anyone who would like to donate:

<https://moonwalklondon2014.everydayhero.com/uk/tasha-6>



Photography: k. t. bruce

Rose Versfeld

Opening Hours

Cairns Library, John Radcliffe

Accessible 24 hours a day, 7 days a week

Staffed 9am-7pm Monday to Friday,
10am-7pm Wednesday

Knowledge Centre, Old Road Campus

Accessible 9am-6pm Monday to Friday
Staffed 9am-6pm Monday to Friday,
10:45am-6pm Wednesday

Contacts

Phone: 01865-221936

Email: hcl-enquiries@bodleian.ox.ac.uk

Web: www.bodleian.ox.ac.uk/medicine

We'd like to take the opportunity this month to remind you of some of the ways we can help you with your studies, research or work. Please let us know if there's anything you'd like us to help with, but to start with did you know that....

If you can't renew your books online we can help?

Please email hcl-renewals@bodleian.ox.ac.uk or call us. We can then investigate and if possible will renew them for you.

Please note: If you have fines of £10 or over with the Bodleian Health Care Libraries you will not be able to borrow any new items until the fine has been brought below £10. You will also not be able to renew items online.

If you are a Medical Student going on electives we can extend your loans?

You can extend your Bodleian Health Care Libraries loans providing you have no outstanding fines with us. Please ask a member of staff about this before you go, in case any current loans cannot be renewed.

You can pay fines online?

Don't forget you can now pay your Bodleian Health Care Libraries fines online at <http://tinyurl.com/BHCLfines>. Please note that fines will only be removed from your account during staffed library hours.

You can read the full text of journal articles that the Library subscribes to in PubMed?

The next time you use Pubmed, why not use PubMed@Oxford, a version linked to the Library's journal subscriptions? If you're not on the University network you can still get the full text of the articles using your Single Sign On. To use Pubmed@Oxford go to http://www.ncbi.nlm.nih.gov/sites/entrez?myncbshare=Oxford_HCL

We have group study spaces for you to use?

Group study rooms are available in the Cairns Library (seats 6) and the Knowledge Centre (seats 12) for use by all library members for study sessions, project meetings or teaching. Both have a whiteboard, a flip chart and network access. The Knowledge Centre Study Room also has a data projector and screen, moveable furniture, and six laptops with access to the University network. Rooms can be booked in advance or used immediately if free. Contact us for bookings or more information.



You can connect your Laptops, Tablets and Smartphones to the Library WiFi network?

The Bodleian Libraries wireless network can be accessed from both the Cairns Library and the Knowledge Centre. To access it, look for and connect to the Bodleian-Libraries network, open a web browser and enter your University Card barcode number and password (the same one you use to access library PCs and renew your library books online).

