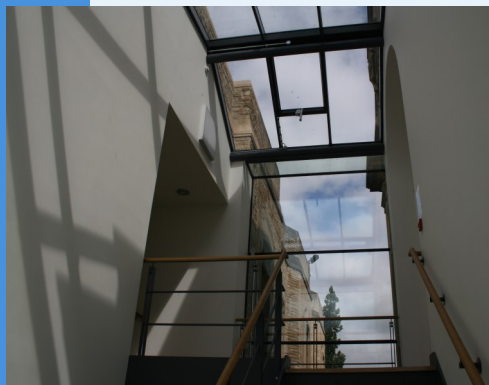


Welcome to Science and Medicine Dispatch, the monthly newsletter bringing you items of interest from the Science and Health Care Libraries of Oxford University. Subscribe by sending a blank email to [rsl-and-hcl-newsletter-subscribe@maillist.ox.ac.uk](mailto:rsl-and-hcl-newsletter-subscribe@maillist.ox.ac.uk), or contact [newsletter.rsl@bodleian.ox.ac.uk](mailto:newsletter.rsl@bodleian.ox.ac.uk). The newsletter can also be read online at [www.bodleian.ox.ac.uk/science/about/science-and-medicine-dispatch](http://www.bodleian.ox.ac.uk/science/about/science-and-medicine-dispatch).



### Opening Hours (Vacation)

Monday to Friday 8:30am-7pm

Saturdays 10am-2pm

Sundays closed

### Contacts

Radcliffe Science Library

Phone: 01865-272800

Email: [enquiries.rsl@bodleian.ox.ac.uk](mailto:enquiries.rsl@bodleian.ox.ac.uk)

Web: [www.bodleian.ox.ac.uk/science/](http://www.bodleian.ox.ac.uk/science/)



@radcliffescilib



Radcliffe Science Library

### Bodleian Data Library

The Bodleian Data Library is website intended to promote access and use of the data collections provided for Bodleian Libraries readers. It aims to:

- Familiarise readers with the legal/methodological/ethical issues of working with data
- Highlight the Bodleian Libraries' range of data-related services
- Allow access to specialist data that is otherwise inaccessible.

For more information, see [www.bodleian.ox.ac.uk/data](http://www.bodleian.ox.ac.uk/data).

BODLEIAN  
DATA  
LIBRARY

### What's new

#### • Reader enquiries at the RSL

RSL staff counted all enquiries received in the week 2- 8 March 2015. A summary report of the results can be found at

<http://tinyurl.com/opssdeq>.

#### • Vacation loans

Items which normally have a one-week loan period are now due back 13th October (Tuesday of 1st week Michaelmas).

### New resources

#### New reference title online:

- Comprehensive Organic Synthesis online (Science Direct, 2014) [www.sciencedirect.com/science/referenceworks/9780080977430](http://www.sciencedirect.com/science/referenceworks/9780080977430)

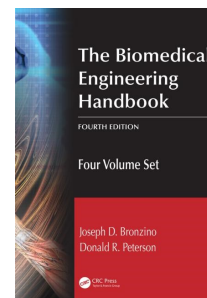
#### Reference titles in print:

- Biocatalysis in Organic Synthesis, 3 Volume set (part of Science of Synthesis - Thieme) - **On order (expected in July 2015)** <http://tinyurl.com/qdt8ye3>
- The Biomedical Engineering Handbook, CRC, 2015 (4 vols set) - <http://tinyurl.com/or9op3e>

#### Databases:

- INSPEC - Information System for Physics, Engineering and Computer Science - Now available on the Web of Science platform! <http://tinyurl.com/pqoyuwk>

Please contact [lilja.ristic@bodleian.ox.ac.uk](mailto:lilja.ristic@bodleian.ox.ac.uk) with any queries.



### ORCID at Oxford

The **ORCID at Oxford** service is now live. This enables Oxford researchers to create an ORCID iD with verified University affiliation. An ORCID

iD is a unique identifier which distinguishes a researcher from others with the same name throughout their career. ORCID iDs are increasingly used by funders and publishers globally to link researchers with their publications and grants. **From August 2015 the Wellcome Trust will require lead applicants to provide an ORCID identifier** when submitting a relevant grant application.

Please **register** for an ORCID, or connect your existing ORCID with the University, by visiting <https://register.it.ox.ac.uk/self/orcid> (Oxford Single Sign On). More information can be found at <http://ox.libguides.com/orcid>.

ORCID  
Connecting Research  
and Researchers

Member  
Organization

## Opening Hours

### Cairns Library, John Radcliffe

Accessible 24 hours a day, 7 days a week

Staffed 9am-7pm Monday to Friday,  
10am-7pm Wednesday

### Knowledge Centre, Old Road Campus

Accessible 9am-6pm Monday to Friday

Staffed 9am-6pm Monday to Friday,  
10:45am-6pm Wednesday

## Contacts

Phone: 01865-221936

Email: [hcl-enquiries@bodleian.ox.ac.uk](mailto:hcl-enquiries@bodleian.ox.ac.uk)

Web: [www.bodleian.ox.ac.uk/medicine](http://www.bodleian.ox.ac.uk/medicine)

## Bodleian Centre for Digital Scholarship – call for volunteers

The Bodleian Centre for Digital Scholarship is a hub for innovative multidisciplinary research, enhancing the Libraries' support for research and teaching in the University of Oxford. Housed in the Bodleian's Weston Library, it is working with a digital scholarship partnership across the disciplinary breadth of the University and beyond. The Centre will support and develop empirical and reflexive approaches to innovate and transform scholarly digital practice.

The Centre is establishing an Advisory Committee, and is looking for volunteers from The MSD. It will meet termly to seek advice and perspectives across the University, hoping that its members will also become advocates for future work within their Divisions. The centre would like to identify academic representatives from the Division. If you are interested in serving on such a committee, please contact [pip.willcox@bodleian.ox.ac.uk](mailto:pip.willcox@bodleian.ox.ac.uk).

## British National Formulary and British National Formulary for Children

### – free access online to all users

Access to the BNF and the BNFC is now available free without any kind of log-in required from NICE at [www.evidence.nhs.uk/formulary/bnf/current](http://www.evidence.nhs.uk/formulary/bnf/current) and [www.evidence.nhs.uk/formulary/bnfc/current](http://www.evidence.nhs.uk/formulary/bnfc/current).

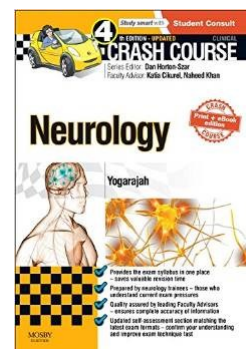
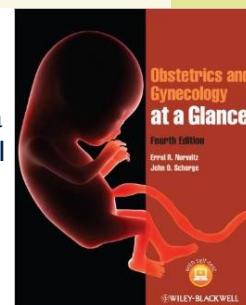
This is available to any user whether they are employed by the MSD, OUH Trust or a member of the public.

# BNF

## Medical Students – new ebooks available

We are pleased to inform you that we have purchased a number of new ebooks, primarily to supplement Medical Students reading lists. These will be listed in SOLO for easy off-campus access:

- **Essentials of clinical immunology** - Chapel, Helen
- **Radiology at a glance** - Chowdhury, Rajat
- **Neurological examination made easy** - Fuller, G.
- **150 ECG problems** - Hampton, John
- **Clinical surgery** - Henry, M.M. & Thompson, J.M.
- **Neurology and neurosurgery illustrated** - Lindsay, Kenneth W.
- **Communication skills for medicine** - Lloyd, M. & Bor, R.
- **Master Medicine : Clinical anatomy** - Monkhouse, S.
- **Obstetrics and Gynecology at a Glance** (4th Edition) - Norwitz, Errol R.
- **Llewellyn-Jones fundamentals of obstetrics and gynaecology** - Oats, J & Abraham, S.
- **Sociology as applied to medicine** - Scambler, G.
- **Infections of the Central Nervous System** - Scheld, W. Michael
- **Textbook of general practice** - Stephenson, Anne
- **Bailey & Love's short practice of surgery** - Williams, Norman S
- **Anaesthesia and intensive care A-Z** - Yentis,



## New resource: Oxford Medical & Surgical Case Reports

Oxford Medical & Surgical Case Reports is a new free search and discovery tool from Oxford University Press. One search quickly and easily brings together peer-reviewed case reports from across OUP medical journals and books collections.

Find out more at [www.omscr.com/](http://www.omscr.com/)

