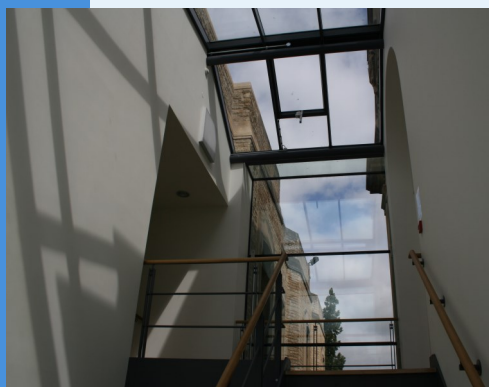


Welcome to Science and Medicine Dispatch, the monthly newsletter bringing you items of interest from the Science and Health Care Libraries of Oxford University. Subscribe by sending a blank email to rsl-and-hcl-newsletter-subscribe@maillist.ox.ac.uk, or contact newsletter.rsl@bodleian.ox.ac.uk. The newsletter can also be read online at www.bodleian.ox.ac.uk/science/about/science-and-medicine-dispatch.



Opening Hours (Term)

Monday to Friday 8:30am-10pm

Saturdays 10am-4pm

Sundays 11am-5pm

Contacts

Radcliffe Science Library

Phone: 01865-272800

Email: enquiries.rsl@bodleian.ox.ac.uk

Web: www.bodleian.ox.ac.uk/science/



@radcliffescilib



Radcliffe Science Library

Consultation on the future of the RSL

The RSL invites readers to have their say in future developments. From 1st to 28th June, there will be a display in the Entrance Hall Lounge. Leave your comments on the board or share them with us at

consultation.rsl@bodleian.ox.ac.uk.

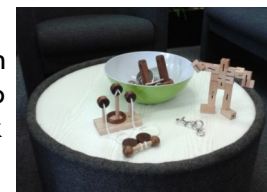
Staff will also be on hand to discuss your ideas 11.30am-12.30pm, Monday 1st- Friday 5th June.

What's new

- Vacation opening hours**
 Vacation opening hours start at the RSL on Monday 22nd June. We will be open 8.30am-7pm weekdays, 10am-2pm Saturdays and closed Sundays.
- 3D Printer Bring a Design/Object Event**
 Our next Bring-a-Design/Object event will take place Friday 12th June 10am-1pm and 2-5pm in the RSL Lounge. Just drop by with a small model to print or a small object to scan! Details of how it will work can be found on the [Bring-a-Design/Object Event page](#).
- Call for research posters**
 Do you have a research poster (size 117x84 cm or smaller), to lend us for our display in the RSL Entrance Hall? If so, please contact beth.gibbs@bodleian.ox.ac.uk.
- BioSense at the OU Museum of Natural History**
 A symposium to accompany the current BioSense exhibition (www.oum.ox.ac.uk/visiting/whatson.htm) will take place on 4th June. Further details are at <http://ow.ly/Nbghf>.
- Water dispensers**
 New water dispensers have been installed at the RSL, which have 'taps' so they are easier to use without causing spills.
- Puzzles**
 The RSL has acquired some 3D puzzles (available in the Lounge) for those who want a bit of a warm up before getting down to work, or are taking a break from study.



BIOSENSE



ORA-Data

ORA-Data (<http://ox.libguides.com/ora-data>) now allows researchers and the University to comply with the EPSRC's policy on research data management, which came into effect on May 1st 2015 (www.epsrc.ac.uk/about/standards/researchdata/).

ORA-Data is a digital repository and catalogue for research data. Any type of digital research data in any file format may be deposited. A permanent record is created for all datasets deposited, which allows them to be discovered by search engines and cited. ORA-Data records are accessed and deposited at the main ORA site (<http://ora.ox.ac.uk/>).

ORA-Data is running as a free pilot until July 2015. The ORA team welcome any feedback - they can be contacted at ora@bodleian.ox.ac.uk.



Opening Hours

Cairns Library, John Radcliffe

Accessible 24 hours a day, 7 days a week

Staffed 9am-7pm Monday to Friday,
10am-7pm Wednesday

Knowledge Centre, Old Road Campus

Accessible 9am-6pm Monday to Friday

Staffed 9am-6pm Monday to Friday,
10:45am-6pm Wednesday

Contacts

Phone: 01865-221936

Email:

hcl-enquiries@bodleian.ox.ac.uk

Web:

www.bodleian.ox.ac.uk/medicine

Welcome to the Bodleian Health Care Libraries team - Sally and Bridget from the Nuffield Orthopaedic Centre and Horton Hospital Libraries

We are extremely pleased to welcome two new members of staff to the Bodleian Health Care Libraries (BHCL); Sally Ryan, Outreach Librarian at the NOC/Horton, and Bridget Lucas, Library Assistant at the Horton. This is part of the new service level agreement between the Bodleian Libraries and the OUH Trust, which sees BHCL taking over the management of the libraries at the Nuffield Orthopaedic Centre and Horton Hospital.

Sally said "Bridget and I have worked in partnership with our colleagues at BHCL providing library services to the Trust, and we're now really excited to join the team on a permanent basis". We look forward to continuing Sally and Bridget's work within the Trust, whilst also enhancing services for the MSD and OUH Trust based at all four Trust sites.

We will be starting work on improving services, facilities and resources over the summer. Watch this space for further announcements!



Sally Ryan (right)
and Bridget Lucas

Reminder to Final Year students:

If you are leaving Oxford University this year, please remember to return any outstanding loans you may have with the Bodleian Health Care Libraries before you graduate, and clear any outstanding fines. You can now pay outstanding Bodleian Health Care Libraries fines online at:

<http://tinyurl.com/BHCLfines>.

In memoriam: Liz Osborne

It is with much sadness that we pass on the news that Liz Osborne, Outreach & Enquiry Services Manager at Bodleian Health Care Libraries died on 1 May. Liz had been suffering from cancer for some time.

Liz wasn't with BHCL for very long, but her very positive and warm personality made a big impression on all of us and she will be greatly missed.



Liz
Osborne

Online Resources for New Doctors – NHS OpenAthens



If you're starting work in the NHS this summer and want access to online databases, ebooks and full text online journals then you need to know about NHS OpenAthens, the username and password system used by the NHS to provide access to online resources. Access is available from anywhere with an Internet connection.

Nationally-available resources include bibliographic databases such as Medline and Embase, as well as hundreds of online textbooks and journals and tools such as The BNF. Your OpenAthens account also gives you access to resources purchased by your local Trust library service.

You can register for OpenAthens at <https://openathens.nice.org.uk/> as soon as you're in post in the NHS. If you register from a PC on the NHS network or with an NHS email address, your account will be created automatically and immediately.

For more information or to get a demo or hands-on practice before you leave Oxford then just contact us at hcl-enquiries@bodleian.ox.ac.uk.