

Science Dispatch

January 2013

Contacts

Radcliffe Science Library
Phone: 01865-272800
Email: enquiries.rsl@bodleian.ox.ac.uk
Web: www.bodleian.ox.ac.uk/science/

 @radcliffeslib

 Radcliffe Science Library

Opening Hours (Hilary)
Monday -- Friday
8:30am -- 10pm
Saturdays 10am -- 4pm
Sundays 11am -- 5pm

Science Writing Competition

Access to Understanding is a new science-writing competition for PhD students and early career researchers organised by [Europe PubMed Central](http://www.europepubmedcentral.com). Further details can be found at <http://tinyurl.com/d2uwg2u>. The closing date is 11th January 2013.

Welcome to the monthly newsletter bringing you items of interest from the Science and Medicine Libraries of Oxford University. Please send your comments and questions to:

newsletter.rsl@bodleian.ox.ac.uk

The newsletter can also be read online at

www.bodleian.ox.ac.uk/science/libraries/science-and-medicine-dispatch

What's new

RSL Opening hours

Term-time opening hours (08.30am-10pm weekdays, 10am-4pm Saturday and 11am-5pm Sunday) will start on Saturday 12th January 2012

Research Skills Toolkit sessions

A reminder that the next Research Skills Toolkit sessions will be taking at OUCS in First Week of Hilary Term. Further details can be found at http://www.bodleian.ox.ac.uk/science/news/2012dec10_02

Research Skills Toolkit

"IT & library skills and services for your research"



WISER programme for Hilary Term

Next term's WISER (Workshops in Information Skills and Electronic Resources) programme can be seen at <http://tinyurl.com/cotn9bn>



Presentation on Europe PubMed Central

Dr Johanna McEntyre of the European Bioinformatics Institute will speak about Europe PubMed Central's work on Tuesday 29th January 2013 at 2.30 pm in the RSL Training Room. More information can be found at http://www.bodleian.ox.ac.uk/science/news/2012dec17_01

RSL "the pride and joy of many a science student"

A review of the RSL has been published on the #bodathon blog at <http://bodathon.wordpress.com/2012/11/26/radcliffe-science-library/>. Of particular interest were the Gill Doors (see <http://tinyurl.com/colnpbf> for more information) and the variety of workspaces available to readers.

Detail from the Gill Doors:

Roger Bacon holding a copy of his *Opus Majus*

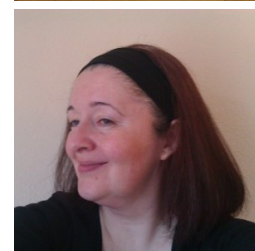


Reflections on Open Access Week 2012

[Catherine Dockerty](http://www.bodleian.ox.ac.uk/science/news/2012dec17_01) (Web and Data Services Manager for the Bodleian Science Libraries) and [Juliet Ralph](http://www.bodleian.ox.ac.uk/science/news/2012dec17_01) (Bodleian Libraries Subject Librarian for the Life Science) have contributed a guest blog post to UK Web Focus, reflecting on activities organised by the Bodleian Libraries for [Open Access Week 2012](http://www.bodleian.ox.ac.uk/science/news/2012dec17_01). The post can be found at <http://tinyurl.com/bpmkosr>

Juliet Ralph

Catherine Dockerty





Medicine Dispatch

January 2013

Contacts

Phone: 01865-221936
Email: hcl-enquiries@bodleian.ox.ac.uk
Web: www.bodleian.ox.ac.uk/medicine

More than 80 new e-books from Oxford Medicine Online

Bodleian Libraries has signed a new deal with Oxford University Press, which vastly increases the number of e-books that are available to members of the University. Now you can access the full text of more than 80 e-book titles via the Oxford Medicine Online website: <http://oxfordmedicine.com>

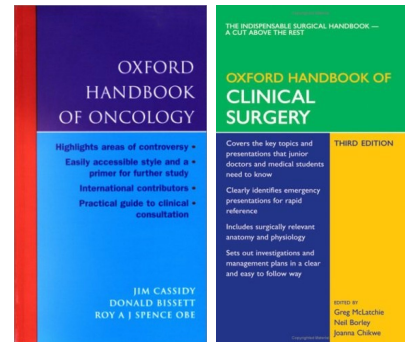
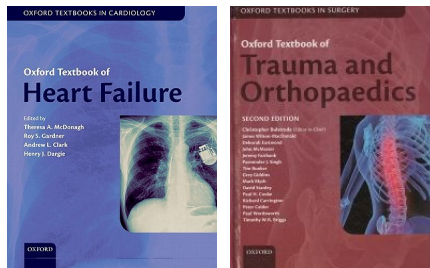


All these titles will be listed in [SOLO](#). You can also access them by going directly to the Oxford Medicine Online website and selecting **Browse all titles in your subscription**. If you are outside the University network click on **Login with Shibboleth** and supply your Single Sign-On details when prompted.

Opening Hours

Cairns Library, John Radcliffe
Accessible 24 hours a day,
7 days a week
Staffed 9am-7pm Monday to
Friday, 10am-7pm Wednesday

**Knowledge Centre,
Old Road Campus**
Accessible 9am-6pm Monday to
Friday
Staffed 9am-6pm Monday to
Friday, 10:45am-6pm Wednesday



The new titles include:

- Oxford Desk Reference series (9 titles), such as ODR Critical Care and ODR Trauma
- Oxford Medical Handbooks (55 titles), such as Oxford Handbook of Critical Care
- Oxford Textbooks (14 titles), such as Oxford Textbook of Endocrinology and Diabetes

Key Resource – ClinicalKey

ClinicalKey was launched earlier this year and covers every medical and surgical specialty. It includes over 900 textbooks, 500 medical journals and 9000 procedural videos, providing current evidence-based answers, expert commentary and MEDLINE abstracts. ClinicalKey is available to all OUH Trust staff, and all University Clinical Medicine students have been sent individual usernames and passwords. Please contact hcl-enquiries@bodleian.ox.ac.uk for further help.



Happy New Year and Good Luck to Clinical Medicine Finalists

The January finals loom for the sixth year Clinical Medicine students; we wish you luck and would like to remind you how we can help by providing:

- 24/7 access to the Cairns Library, using your University Card
- Bookable Group Study Rooms, at both the Cairns Library and Knowledge Centre
- Access to the full text of Reading List e-books via SOLO for your last-minute queries

