



Science Dispatch

May 2012

Contacts

Radcliffe Science Library

Phone: 01865-272800

Email: enquiries.rsl@bodleian.ox.ac.uk

Web: www.bodleian.ox.ac.uk/science/

FOLLOW US ON **Twitter**

Find us on **Facebook**

Opening Hours (Trinity)

Monday -- Friday

8:30am -- 10pm

Saturdays 10am -- 4pm

Sundays 11am -- 5pm

Science and Medicine Dispatch - reader survey

There is still time to give your views on the newsletter at

<http://tinyurl.com/cae8m6e>

Changes to iPad Lending

The RSL now offers 7-day loans of the iPad2 and reservation via [SOLO](http://ox.libguides.com/ipad2) - see <http://ox.libguides.com/ipad2> for details.



Welcome to the monthly newsletter bringing you items of interest from the Science and Medicine Libraries of Oxford University. Please send your comments and questions to:

newsletter.rsl@bodleian.ox.ac.uk

The newsletter can also be read online at

<http://www.bodleian.ox.ac.uk/science/libraries/science-and-medicine-dispatch>

What's new

Laptop locks at the RSL

The RSL now has a supply of laptop locks for securing laptops to desks when unattended. If you would like to use one, please ask at the Enquiry Desk in the Entrance Hall.



WISER sessions coming up

Sessions covering bibliometrics and reference management will take place in June

See <http://libguides.bodleian.ox.ac.uk/workshops> for further details.

Bank Holiday opening hours - reminder

The RSL will be open on June 4th and 5th from 9am to 7pm.

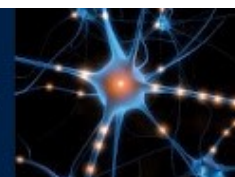
IEEE Xplore Mobile

The IEEE Xplore Digital Library, a key resource in engineering and technology, now has a mobile-optimised interface at

<http://m.ieeexplore.ieee.org>



Saving Oxford Medicine



Saving Oxford Medicine seeks medical archives

[Saving Oxford Medicine](http://www.savingoxfordmedicine.org) aims to ensure that key sources for the recent history of medicine in Oxford are recorded. It includes work to survey the archives of current and retired members of Oxford University's [Medical Sciences Division](http://www.medicalsciences.ox.ac.uk) (one of the foremost centres for medical research and teaching in the world) and to catalogue medical archives already held by the Bodleian Library. For more details, see their website at <http://tinyurl.com/64jt83p> or their blog at <http://savingoxfordmedicine.blogspot.co.uk/>

Scan and Deliver

The Bodleian Libraries Scan and Deliver service went live on April 16th. This is a new service allowing current members of the University to request copies of articles or chapters from printed materials held offsite to be emailed to them directly. There is a charge for the service, payable via [PCAS](http://www.pcas.org). Further details can be found at www.bodleian.ox.ac.uk/services/scan-and-deliver



Medicine Dispatch

May 2012

Contacts

Phone: 01865-221936
Email: hcl-enquiries@bodleian.ox.ac.uk
Web: www.bodleian.ox.ac.uk/medicine

Opening Hours

Cairns Library, John Radcliffe

Accessible 24 hours a day,
7 days a week

Staffed 9am-7pm Monday to
Friday, 10am-7pm Wednesday

Knowledge Centre, Old Road Campus

Accessible 9am-6pm Monday to
Friday

Staffed 9am-6pm Monday to
Friday, 10:45am-6pm Wednesday

Key Resource - UpToDate

UpToDate includes more than 7400 reviews by 3800 experts, each linked to Medline abstracts and a complete drug information database. It is updated every four months.

Please see our **UpToDate LibGuide** for more information:

<http://ox.libguides.com/uptodate>

UpToDate is available via OxLIP+

http://oxlib-plus@bodleian.ox.ac.uk



Spring Bank Holiday and Queen's Diamond Jubilee – Library Opening Hours

The Cairns Library will be **OPEN but NOT staffed** from 7pm Friday 1 June until 10am Wednesday 6 June. The Knowledge Centre at the Old Road Campus is closed on Monday 4 June and Tuesday 5 June.

Cairns Library and Knowledge Centre Refurbishments

As reported last month, work to develop a new book collection area and improved quiet study and IT facilities in the **Cairns Library** will take place from **18 June to 1 August**. During the works alternative quiet study facilities will be available in the Beeson Training Room, which will not therefore be available for teaching. However, the Cairns Group Study Room will be available and staff are always happy to deliver training in departmental and other locations.

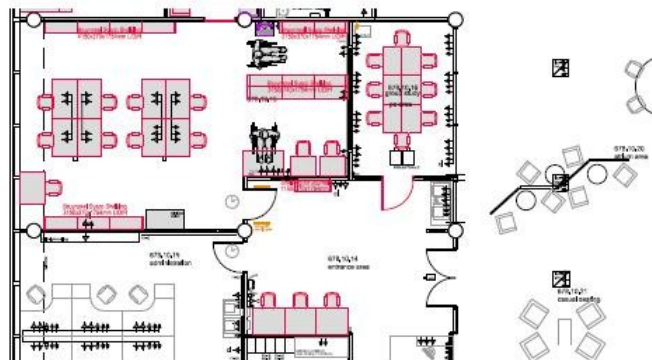
A temporary book collection area will be built to allow access to books, but there will be at least two days (dates to be confirmed) when our book stock will be inaccessible.

We will also be undertaking some refurbishment work at the **Knowledge Centre (KC)** over the summer vacation. The anticipated period of works is **1 July to mid August**. There will be significant disruption over this period and the majority of our KC book collection will be unavailable for at least part of the time. We will make sure that high use books are kept on site and we will help you access alternative copies of other works if required.

More information will follow at www.bodleian.ox.ac.uk/medicine/refurbishment



Knowledge Centre



New Knowledge Centre layout

Key Resource – Sci59 Online

Sci59 Online is a career development tool for early medical trainees and final year students. It matches an individual's personal and professional characteristics and aspirations to appropriate specialty choices and provides the user with suggestions for further research. Sci59 Online features 100+ questions on topics such as preferred work settings, decision-making styles, and comfort with uncertainty. The process takes about 15 minutes but you can break off and return later.

Username are available from hcl-enquiries@bodleian.ox.ac.uk.

Your username and password entitle you to 4 different submissions of the completed questionnaire.

