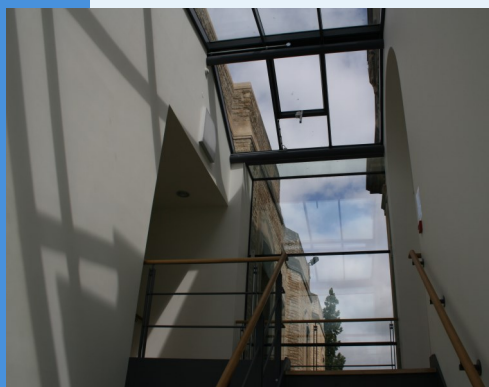


Welcome to Science and Medicine Dispatch, the monthly newsletter bringing you items of interest from the Science and Health Care Libraries of Oxford University. Subscribe by sending a blank email to rsl-and-hcl-newsletter-subscribe@maillist.ox.ac.uk, or contact newsletter.rsl@bodleian.ox.ac.uk. The newsletter can also be read online at www.bodleian.ox.ac.uk/science/about/science-and-medicine-dispatch



Opening Hours (Vacation)

Monday to Friday 8:30am-7pm

Saturdays 10am-2pm

Sundays closed

Contacts

Radcliffe Science Library

Phone: 01865-272800

Email: enquiries.rsl@bodleian.ox.ac.uk

Web: www.bodleian.ox.ac.uk/science/

 @radcliffescilib

 Radcliffe Science Library



What's new

• Carols at the RSL

The Bodleian Libraries Choir and Instrumentalists will give a performance of traditional Christmas carols on the Abbot's Kitchen Staircase in the RSL at 3pm on Tuesday 15th December. Mulled wine and mince pies will be served afterwards in the Entrance Hall Lounge.

• Vacation opening hours

Vacation opening hours start at the RSL on Monday 7th December. We will be open 8.30am-7pm weekdays, 10am-2pm Saturdays and closed Sundays.

• RSL Christmas and New Year closure

The RSL will close for the Christmas break at 5pm on Wednesday 23rd December and re-open at 8.30am on Monday 4th January 2016.

Change to APC payment procedure for Wellcome Trust and COAF-funded authors

The way APCs are paid for researchers funded by the Wellcome Trust and COAF has changed. Previously, researchers were required to arrange payment of APCs themselves and reclaim it. From now on, researchers should not pay APCs but should forward the publisher's APC or article-charges request form for each accepted paper to the Bodleian Libraries for payment instead along with the application form which is found at <http://tinyurl.com/COAF-Nov15>.

Payment requests should be emailed to apc@bodleian.ox.ac.uk, or sent in hard copy to Open Access APC forms, Acquisitions Services, Collections and Resource Description (C&RD), Bodleian Libraries, University of Oxford Osney One Building, Osney Mead, Oxford, OX2 0EW.

Homemade cake in aid of Oxfam



Oxfam fundraising success

On 25 November the RSL hosted a charity coffee morning to raise money for Oxfam. Staff and readers consumed delicious homemade cake and raised £218.13. That's enough money for:

- 5 x toilets,
- 5 x emergency hygiene kits
- 4 x safe water for 10 people.

Thank you to everyone who helped make the event such a success.

Opening Hours

Cairns Library, John Radcliffe

Accessible 24 hours a day, 7 days a week

Staffed 9am-7pm Monday to Friday,
10am-7pm Wednesday

Knowledge Centre, Old Road Campus

Accessible 9am-6pm Monday to Friday
Staffed 9am-6pm Monday to Friday,
10:45am-6pm Wednesday

Contacts

Phone: 01865-221936

Email: hcl-enquiries@bodleian.ox.ac.uk

Web: www.bodleian.ox.ac.uk/medicine

Christmas Extended Loans

From Monday 7th December until Christmas books loaned by the Cairns Library and Knowledge Centre will be due on **Monday 4th January 2014**.

Apps for medicine and health care – BMJ Best Practice and UpToDate Anywhere

A reminder that we now have app access to two major resources, which can be accessed as follows:

BMJ Best Practice gives you access to the full content offline without any need for a Wi-Fi or data connection. You need to create a “My BMJ Best Practice account” at <http://bestpractice.bmj.com> and request the institutional code from us at hcl-enquiries@bodleian.ox.ac.uk before downloading the app from <http://bestpractice.bmj.com/app>.

BMJ Best Practice

Your instant second opinion

UpToDate Anywhere

Before downloading the app you’ll need to create an UpToDate Anywhere account:

UpToDate[®]

- **For Medical Students and other members of the MSD:**

You’ll need to sign up by going to *UpToDate* via Oxlip+ -

<http://oxlip-plus.bodleian.ox.ac.uk/> or SOLO - <http://solo.bodleian.ox.ac.uk/>.

Your password will expire every 90 days so you’ll need to go through the Oxlip+/SOLO link from time to time to refresh it.

- **NHS users:**

To sign up, please go to the OUH intranet home page -

<http://ouh.oxnet.nhs.uk> and click on *UpToDate* from the link on bottom right hand side of the page in the “Clinical Resources” section. Then click on the “Login/Register” tab in the upper right hand corner of the *UpToDate* page.

Once you’ve registered you can download any of the mobile apps on up to two devices.

Christmas Vacation Opening Hours – Cairns Library and Knowledge Centre

Staffed Hours:	CAIRNS	KNOWLEDGE CENTRE	NOC	HORTON
Monday 21st December 2015	9am to 7pm	9am to 6pm	9am to 5pm	9am to 5pm
Tuesday 22nd December 2015	9am to 7pm	9am to 6pm	9am to 5pm	9am to 5pm
Wednesday 23rd December 2015	9am to 7pm	10.45am to 6pm	10.45am to 5pm	9am to 5pm
Thursday 24th December	9am to 5pm	9am to 2pm (building then closed)	9am to 5pm	9am to 2pm (building then closed)
Friday 25th December	UNSTAFFED	CLOSED	UNSTAFFED	CLOSED
Monday 28th December	UNSTAFFED	CLOSED	UNSTAFFED	CLOSED
Tuesday 29th December	9am to 5pm	CLOSED	9am to 5pm	CLOSED
Wednesday 30th December	9am to 5pm	CLOSED	9am to 5pm	CLOSED
Thursday 31st December	9am to 5pm	CLOSED	9am to 5pm	CLOSED
Friday 1st January	UNSTAFFED	CLOSED	UNSTAFFED	CLOSED

24 hour access is available at the Cairns Library during unstaffed hours using your library card. Normal staffed hours resume on Monday 4th January.