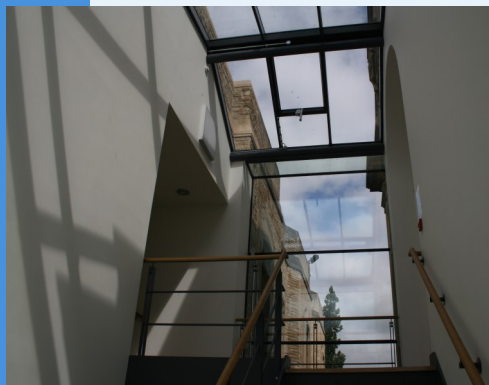


Welcome to Science and Medicine Dispatch, the monthly newsletter bringing you items of interest from the Science and Health Care Libraries of Oxford University. Subscribe by sending a blank email to rsl-and-hcl-newsletter-subscribe@maillist.ox.ac.uk, or contact newsletter.rsl@bodleian.ox.ac.uk. The newsletter can also be read online at www.bodleian.ox.ac.uk/science/about/science-and-medicine-dispatch



Opening Hours (Vacation)

Monday to Friday 8:30am-7pm

Saturdays 10am-2pm

Sundays closed

Contacts

Radcliffe Science Library

Phone: 01865-272800

Email: enquiries.rsl@bodleian.ox.ac.uk

Web: www.bodleian.ox.ac.uk/science/



@radcliffescilib



Radcliffe Science Library

Plants

The indoor plants in the RSL have been re-potted by garden staff at Keble College, who will now be caring for them on an ongoing basis at no cost to the Bodleian Libraries. Many thanks to Keble for their kind assistance in making the RSL a more attractive and welcoming place, especially Ade Roche (Garden and Grounds Manager) and his team,

Nicholas French (Domestic Bursar) and Roger Boden (Bursar).



What's new

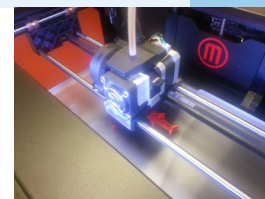
Merry Christmas and a Happy New Year to all our readers!

- Vacation opening hours**
 Vacation opening hours will start on Monday 8th December. We will be open 8.30am to 7pm Monday to Friday, 10am to 2pm Saturday and closed on Sundays.
- Christmas and New Year closed period**
 The RSL will close at 5pm on Tuesday 23rd December and reopen at 8.30am on Monday 5th January 2015.
- Vacation loans**
 Books borrowed over the vacation are due back on Tuesday 20th January 2015.
- ORA-Data**
 From Monday 1st December, the functionality of ORA will include the facility to deposit datasets as well as publications. More details can be found at <http://researchdata.ox.ac.uk/preserving-your-data/ora-data/>
- Carols at the RSL**
 The Choir and Instrumentalists of the Bodleian Libraries will perform some Christmas music on Friday 5th December at 4pm in the RSL Abbot's Kitchen stairwell. Mulled wine and mince pies will then be served in the Entrance Hall Lounge.
- Cushions**
 In response to feedback from readers, the RSL has now provided cushions for readers' use on Levels 5 to 8.



3D printing at the RSL

The RSL has recently acquired a 3D printer and two 3D scanners. Look out for demonstrations of these coming up in December. For more details, see <http://libguides.bodleian.ox.ac.uk/3dprintingsscanning>



Welcome to Beth Gibbs

Beth Gibbs joins the Radcliffe Science Library team as the new Library Services Manager, responsible for the front line services delivered to readers in house and reader spaces. Beth has a degree in Mechanical Engineering, a Masters in Information & Library Studies and a PGCHE. New to Oxford, she has experience of higher and further education libraries, most recently as a library manager in FE colleges in Surrey and South Wales, and prior to that as a campus librarian at Nottingham Trent University. She is also a copy-editor for Information Research journal.



Beth Gibbs

Opening Hours

Cairns Library, John Radcliffe

Accessible 24 hours a day, 7 days a week

Staffed 9am-7pm Monday to Friday,
10am-7pm Wednesday

Knowledge Centre, Old Road Campus

Accessible 9am-6pm Monday to Friday

Staffed 9am-6pm Monday to Friday,
10:45am-6pm Wednesday

Contacts

Phone: 01865-221936

Email: hcl-enquiries@bodleian.ox.ac.uk

Web: www.bodleian.ox.ac.uk/medicine

Research Skills Toolkits

These free 2-hour hands-on workshops are run jointly by IT Services and the Bodleian Libraries and are open to graduate researchers. Topics covered include:

- Reference management software
- Keeping up to date with emerging research
- Managing your thesis with Word
- Analysing data with Excel pivot tables
- Podcasting with Audacity and Weblearn
- Free software for image manipulation
- Measuring research impact
- Your thesis, copyright and submitting to ORA

During the sessions you will meet with subject specialists for help and guidance on further training.

Research Skills Toolkit for Medical Sciences will take place:

Wednesday 21 January 10am-12pm

Thursday 22 January 2-4pm

Book a place at

<http://courses.it.ox.ac.uk/detail/STQA>

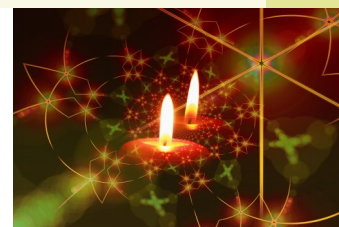


Christmas Extended Loans

From 8th December until 22nd December books loaned by the Cairns Library and Knowledge Centre will be due on **Monday 5th January 2015**.

Christmas Vacation Opening Hours – Cairns Library and Knowledge Centre

24 hour access is available at the Cairns Library during unstaffed hours using your library card. Normal staffed hours resume on Monday 5th January.



Date	Cairns Library JR Hospital	Knowledge Centre Old Road Campus
Monday 22nd December	9am-7pm	9am-6pm
Tuesday 23rd December	9am-7pm	9am-6pm
Wednesday 24 th December	9am-5pm	9am-2pm
Thursday 25 th December	Unstaffed	Closed
Friday 26 th December	Unstaffed	Closed
Monday 29 th December	9am-5pm	Closed
Tuesday 30 th December	9am-5pm	Closed
Wednesday 31 st December	9am-5pm	Closed
Thursday 1 st January	Unstaffed	Closed
Friday 2 nd January	9am-5pm	9am-4pm

Have you got overdue books or need to pay fines, but are too busy to make it to the library?

It's a busy time of year, and we know it's not always easy to get to the Library. If you've got outstanding fines and can't renew your books email hcl-renewals@bodleian.ox.ac.uk or call us. We can then investigate and if possible will renew them for you.

If you can get online, you can renew your books or check your account using SOLO <http://solo.bodleian.ox.ac.uk>. You can now also pay Bodleian Health Care Libraries fines online using either debit or credit cards by registering at <http://tinyurl.com/BHCLfines>.