



# Science Dispatch

December 2012

## Contacts

Radcliffe Science Library

Phone: 01865-272800

Email: [enquiries.rsl@bodleian.ox.ac.uk](mailto:enquiries.rsl@bodleian.ox.ac.uk)

Web: [www.bodleian.ox.ac.uk/science/](http://www.bodleian.ox.ac.uk/science/)



@radcliffeslib



Radcliffe Science Library

## Opening Hours (Vacation)

Monday -- Friday

8:30am -- 7pm

Saturdays 10am -- 2pm

Sundays closed

## Papers

Benjamin Schuster-Böckle will present an overview of Papers (article and reference management software for Windows, Mac and iPad/iPhone) on 6 December 2:30-3:30pm in the RSL Training Room.



## Vacation opening hours

The RSL will switch to vacation opening hours from Monday 3rd December until Friday 11th January 2012. Full details of opening hours can be found at <http://tinyurl.com/boaxd3x>

## Christmas closure

The Radcliffe Science Library will close at **5pm** on Friday **21st December 2012** and will reopen at **8.30am** on Wednesday **2nd January 2013**

## Vacation loans

Vacation borrowing will start on Monday 26th November. Books will be due back on Tuesday of 1st week of Hilary Term (15th January 2013).

Welcome to the monthly newsletter bringing you items of interest from the Science and Medicine Libraries of Oxford University. Please send your comments and questions to:

[newsletter.rsl@bodleian.ox.ac.uk](mailto:newsletter.rsl@bodleian.ox.ac.uk)

The newsletter can also be read online at

[www.bodleian.ox.ac.uk/science/libraries/science-and-medicine-dispatch](http://www.bodleian.ox.ac.uk/science/libraries/science-and-medicine-dispatch)

## What's new

**Merry Christmas and a Happy New Year to all our readers!**

### Research Skills Toolkit

The next Toolkit sessions will be held in 1st week Hilary - these are free hands-on 2 hour workshops for research students. Topics covered include reference management software, submitting your thesis to ORA and measuring research impact. You will also meet with subject specialists for help and guidance on further training. Read more and book your place at <http://tinyurl.com/8blpbc>

### Update to RefWorks

Over summer RefWorks released a new version of their Write-n-Cite software to make adding citations to Microsoft Word documents easier. This new software has now been rolled out on reader PCs. More information on using the new version of Write-n-Cite can be found on the Reference Management LibGuide at <http://libguides.bodleian.ox.ac.uk/reference-management>

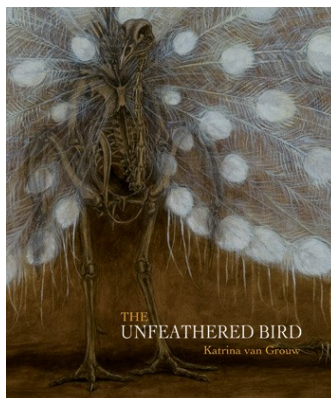
### New Books Published Acknowledging Alexander Library

Two recent books arose from research done in the Alexander Library, which is acknowledged in the credits in both cases:

#### ***Birds in a cage: Warburg POW Camp, 1941* by Derek Niemann. Short Books in association with RSPB, 2012**

"...the untold story of an obsessive quest behind barbed wire..."

Derek Niemann draws on original diaries, letters and drawings, to show how John Buxton, Peter Conder, John Barrett and George Waterston were forged by their wartime experience into giants of postwar wildlife conservation."

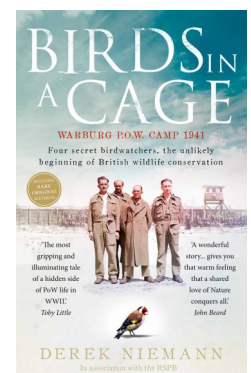


#### ***The unfeathered bird* by Katrina van Grouw. Princeton University Press, 2012**

"...richly illustrated book on bird anatomy that offers refreshingly original insights into what goes on beneath the feathered surface."

### Alexander Library "a special place"

A review of the Alexander Library is featured in a recent post on the **#bodathon** blog. The blog is written by a 2nd year law student aiming to visit all of the Bodleian Libraries in one academic year. Her review is at <http://bodathon.wordpress.com/2012/10/26/alexander-library-of-ornithology/>





# Medicine Dispatch

December 2012

## Contacts

Phone: 01865-221936  
Email: [hcl-enquiries@bodleian.ox.ac.uk](mailto:hcl-enquiries@bodleian.ox.ac.uk)  
Web: [www.bodleian.ox.ac.uk/medicine](http://www.bodleian.ox.ac.uk/medicine)

### Opening Hours

#### Cairns Library, John Radcliffe

Accessible 24 hours a day,  
7 days a week

Staffed 9am-7pm Monday to  
Friday, 10am-7pm Wednesday

#### Knowledge Centre, Old Road Campus

Accessible 9am-6pm Monday to  
Friday

Staffed 9am-6pm Monday to  
Friday, 10:45am-6pm Wednesday

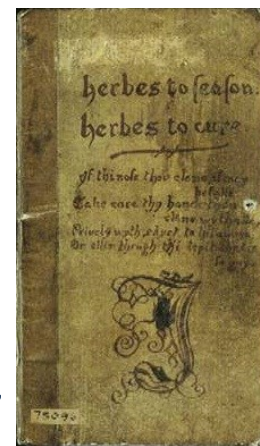
## Key Resource – Informa Healthcare journals

The Bodleian Health Care Libraries provide access to a number of journals packages, including **Informa Healthcare**. This comprises the full text of 180 journals including the entire 'Expert Opinion' collection, and titles such as *Amyotrophic Lateral Sclerosis*. All of these and more are listed at <http://journals.bodleian.ox.ac.uk>



## Member of staff earns a Distinction for Masters Dissertation

Heartfelt congratulations are due to **Catherine Hartley** for completing her Masters in Library and Information Studies at UCL, whilst also working with us at the Bodleian Health Care Libraries. Catherine used the Bodleian Libraries collections extensively, and was awarded a distinction for her dissertation on the significance of manuscript medical recipe books in the lives of sixteenth century women.



"Herbes to season, herbes to cure"

## Librarians transform lives with EndNote sessions

We have found that the **Endnote X5** sessions held at the Cairns Library and at the Knowledge Centre have been so popular that we are running additional sessions in December:

- Cairns Library Beeson Room **Thursday 6th December 10-11am**
- Cairns Library Beeson Room **Wednesday 12th December 3-4pm**

Email [hcl-enquiries@bodleian.ox.ac.uk](mailto:hcl-enquiries@bodleian.ox.ac.uk) to sign up for one of the sessions.

Feedback has been overwhelmingly positive. People attending sessions at the Knowledge Centre in early November wrote comments such as:

- "Endnote is life transforming"
- "Thanks for a really helpful session. It should save me hours!"
- "V useful—thank you! And nice to know there will be help available when needed in future."



## Christmas Extended Loans

From Monday 10 December until Christmas any books borrowed from the Cairns Library and Knowledge Centre will be due back 7 January 2013.



## Christmas Vacation Opening Hours – Cairns Library and Knowledge Centre

Date	Cairns Library - staffed	Knowledge Centre – open
Mon 24 Dec	9am – 5pm	9am – 4pm
Tue 25 Dec	UNSTAFFED	CLOSED
Wed 26 Dec	UNSTAFFED	CLOSED
Thu 27 Dec	9am – 5pm	9am – 5pm
Fri 28 Dec	9am – 5pm	9am – 5pm
Mon 31 Dec	9am – 5pm	9am – 4pm
Tue 1 Jan	UNSTAFFED	CLOSED
Wed 2 Jan	9am – 7pm	9am – 6pm
Thu 3 Jan	9am – 7pm	9am – 6pm
Fri 4 Jan	9am – 7pm	9am – 6pm