



Science Dispatch

November 2013

Contacts

Radcliffe Science Library
Phone: 01865-272800
Email: enquiries.rsl@bodleian.ox.ac.uk
Web: www.bodleian.ox.ac.uk/science/



@radcliffeslib



Radcliffe Science Library

Opening Hours (Michaelmas)

Monday -- Friday

8:30am -- 10pm

Saturdays 10am -- 4pm

Sundays 11am -- 5pm

Saturday book deliveries

Items from remote storage ordered between 10.30am and 7.30pm on Friday will now be delivered on Saturday morning. This is a trial service for 2013-14 in term-time only (Weeks 0-8). Details are at <http://tinyurl.com/q54rret>

Parallel Universe
POETRY COMPETITION

Parallel Universe winning entries

The text of the winning poems is now available at <http://tinyurl.com/polgo28>. We also have audio recordings of the winners reading their work.

Welcome to the monthly newsletter bringing you items of interest from the Science and Medicine Libraries of Oxford University. Please send your comments and questions to:

newsletter.rsl@bodleian.ox.ac.uk

The newsletter can also be read online at

<http://www.bodleian.ox.ac.uk/science/about/science-and-medicine-dispatch>

What's new

WISER sessions coming up

Sessions in November include:

- Research impact: "Who's citing you?" and "Tools of the trade"
- RefWorks for Sciences and Social Sciences
- Tech tools - reference management
- Mendeley for reference management

For details and to book, see <http://ox.libguides.com/workshops>

Upcoming OA events

We have two key Open Access events coming up.

- **eLife: a new OA journal by scientists for scientists** (Chris Ponting, DPAG), RSL, Wednesday 27th November, 11am-12pm. Book at <https://courses.it.ox.ac.uk/detail/TZ001>
- **Open Access: Altmetrics** (Mike Taylor, Elsevier), RSL, Wednesday 11th December, 2-3pm. Book at <https://courses.it.ox.ac.uk/detail/TZ002>

Help us buy Vesalius 500th anniversary edition

Donations are invited towards the purchase of a new English translation of the *Fabrica* of Andreas Vesalius (1514-1564), costing £1000. To donate please visit <http://www.bodleian.ox.ac.uk/get-involved/friends/dukehumfrenysnight> or email fob@bodleian.ox.ac.uk.

The "Open Scientist"

If you missed Sophie Kay's Open Access Week talk, *The Open Scientist: The Why, When and How of Open Scientific Research*, the slides are online at <http://t.co/3gUqevFzsc>. Sophie will be speaking on *The Open Science Training Initiative* on 11 November as part of [Engage Social Media Michaelmas](#) (below) - book at <http://courses.it.ox.ac.uk/detail/ENAD>.

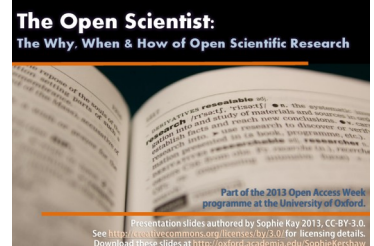
Engage Social Media Michaelmas

This is a full term of social media and digital communications events to explore tools and strategies for building online presence, academic networking, engagement and impact.

For more details see <http://blogs.it.ox.ac.uk/engage/social-media-michaelmas/>.

Upcoming events include:

- [Blogging and Tweeting in Academia](#)
- [Altmetrics – looking at impact beyond citations](#)
- [LinkedIn: Designing your academic profile](#)





Medicine Dispatch

November 2013

Contacts

Phone: 01865-221936

Email: hcl-enquiries@bodleian.ox.ac.uk

Web: www.bodleian.ox.ac.uk/medicine

Opening Hours

Cairns Library, John Radcliffe

Accessible 24 hours a day,

7 days a week

Staffed 9am-7pm Monday to

Friday, 10am-7pm Wednesday

Knowledge Centre,

Old Road Campus

Accessible 9am-6pm Monday to

Friday

Staffed 9am-6pm Monday to

Friday, 10:45am-6pm Wednesday

Need Help with Referencing?

EndNote X6 Training Sessions at the Old Road Campus

Librarians at the Knowledge Centre and the Cairns Library will be running training sessions for EndNote X6 in November. At the end of the introductory session you'll be able to import references from PubMed and Google Scholar, de-duplicate references in an Endnote Library, and be able to cite references in Word documents. More details and dates to follow on our webpages – www.bodleian.ox.ac.uk/medicine

New Bodleian Exhibition : Great Medical Discoveries – 800 Years of Oxford Innovation

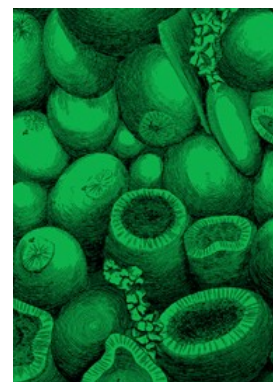
This new Bodleian exhibition running from 22nd November 2013 to 18th May 2014 will tell the story of Oxford's place in the history of medicine from the medieval period to its current position at the forefront of medical research and clinical practice. Visitors will be able to view a unique display of treasures which uncover Oxford's role in some of the most significant discoveries in medical history.

Venue - Exhibition Room, Bodleian Library. **Admission is free.**

Accompanying the exhibition, Conrad Keating (Writer-In-Residence, [The Wellcome Unit for the History of Medicine](http://www.wellcome.ac.uk)), will deliver a **Lunchtime Lecture** at Convocation House on **November 27th** which will be repeated at the Radcliffe Science Library in the Training Room, **December 2nd, 2-2.30pm.**

For more information on the exhibition and lecture please see -

www.bodleian.ox.ac.uk/whatson/whats-on



Research Skills Toolkit

"IT & library skills and services for your research"



Liz Osborne



Research Skills Toolkit for Medical Sciences in Hilary and Michaelmas

A free hands-on workshop for research students in the MSD introducing key tools, techniques and resources. Topics covered in this 2 hour session include:

- Reference management software
- Literature searching and advanced search techniques
- Keeping up to date with emerging research
- Analysing data with Excel pivot tables
- Free software for image manipulation

Welcome to Liz Osborne

We are pleased to welcome Liz Osborne as the latest member of our team at Bodleian Health Care Libraries. Liz started on October 1st as our new

Outreach and Enquiry Services Manager.

Liz comes to us with experience from a range of sectors having worked variously as Information Services Manager at the Greater London Authority, in a range of NHS libraries in London, at the Department of Health, and at Trinity College, Carmarthen.