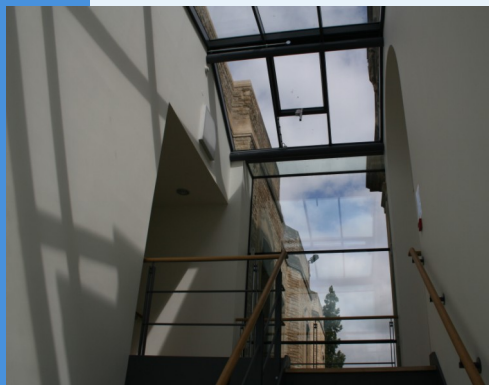


Welcome to Science and Medicine Dispatch, the monthly newsletter bringing you items of interest from the Science and Health Care Libraries of Oxford University. Subscribe by sending a blank email to rsl-and-hcl-newsletter-subscribe@maillist.ox.ac.uk, or contact newsletter.rsl@bodleian.ox.ac.uk. The newsletter can also be read online at www.bodleian.ox.ac.uk/science/about/science-and-medicine-dispatch



Opening Hours (Term)

Monday to Friday 8:30am-10pm

Saturdays 10am-4pm

Sundays 11am-5pm

Contacts

Radcliffe Science Library

Phone: 01865-272800

Email: enquiries.rsl@bodleian.ox.ac.uk

Web: www.bodleian.ox.ac.uk/science/



@radcliffeslib



Radcliffe Science Library

Training courses at the RSL in Hilary and Trinity terms

The RSL has a full programme of workshops in research skills aimed at graduate students this term and in Trinity.

Courses include a range of subject-specific courses on **research impact** and finding information, as well as sessions on patents and reference management.

Full details are at

<http://tinyurl.com/6d6x7nt>

Booking is via the Graduate Academic Training Programme website at

<http://tinyurl.com/qcwrhfb>

using your Single Sign-On (SSO) ID.

What's new

- **Oxford Martin School Blurring the Lines seminar series**

The Oxford Martin School Hilary Term seminar series looks at the opportunities for human development that stem from advancements in technology.

www.oxfordmartin.ox.ac.uk/event/1747

- **WISER sessions coming up**

- **Research Impact: citation analysis tools**

Tuesday 18th February, 2-3.30pm in the RSL Training Room .

Book at <http://courses.it.ox.ac.uk/detail/TZD24>

- **Open Access: What's happening?**

Wednesday 5th March, 12-1pm, at the Taylor Institute

Book at <http://courses.it.ox.ac.uk/detail/TZW7>

- **Paying fines online**

The RSL has the facility to pay fines online by credit card - details are at:

www.bodleian.ox.ac.uk/science/use/borrowing/paying-fines-online



How to become a 'Privileged Borrower' at the RSL

DPhil students and researchers in Science and Medicine can register to borrow selected 'Reference Only' material from the RSL, such as 'legal deposit' books and journals (including RSL items from Closed Stack). This does not include latest editions of standard reference works or student textbooks. Ask at the RSL desk if you are eligible to upgrade your membership. See www.bodleian.ox.ac.uk/science/use/borrowing/privilege for the full regulations.

Web of Science and Scopus updates

WEB OF SCIENCE™
in proud partnership with Jisc

SUPPORTING EDUCATION AND RESEARCH

Changes are underway to the user interfaces of two major research resources. As of January 12th, Web of Knowledge is no more - it's been renamed [Web of Science](#). It also has a redesigned interface. Web of Science has in turn become the **Web of Science Core Collection**. Full release notes are at <http://tinyurl.com/pesgu2p>.

[Scopus](#) also updated its interface on February 1st 2014 to mark its 10th anniversary. The primary intent is "to streamline the number of steps a researcher needs to take to accomplish the most common tasks". Full release notes are at <http://tinyurl.com/nf7jat5>.

Scopus

The largest abstract and citation database of peer-reviewed literature.



Opening Hours

Cairns Library, John Radcliffe

Accessible 24 hours a day, 7 days a week

Staffed 9am-7pm Monday to Friday,
10am-7pm Wednesday

Knowledge Centre, Old Road Campus

Accessible 9am-6pm Monday to Friday

Staffed 9am-6pm Monday to Friday,
10:45am-6pm Wednesday

Contacts

Phone: 01865-221936

Email:

hcl-enquiries@bodleian.ox.ac.uk

Web:

www.bodleian.ox.ac.uk/medicine

Need to pay your fines but too busy to make it to the library?

We're pleased to announce that you can now pay Bodleian Health Care Libraries fines online using either debit or credit cards.

To register and pay fines online please go to: <http://tinyurl.com/BHCLfines>.

Current Protocols - Subscription Renewal Consultation

Do you use *Current Protocols*? We are currently reviewing our subscription to this online collection and are keen to get feedback on its value to Oxford researchers. As part of this process, we'd welcome any feedback you may have on the importance of this package to your work. Please contact Owen Coxall, the BHCL Collections Manager, at owen.coxall@bodleian.ox.ac.uk by February 21st.

See <http://tinyurl.com/CurrentP> for more information.

GREAT MEDICAL DISCOVERIES

800 years of Oxford innovation



Lunchtime Lecture Series

A series of lunchtime lecture are taking place to accompany the exhibition [Great Medical Discoveries: 800 Years of Oxford Innovation](#). All are to be held at **1-1.30pm, Convocation House, Old Bodleian Library**.

- Professor Joshua Silver – **How to make your own eyeglasses for about £1**: an Oxford technology created to benefit the developing World (5th February)
- Dr Allan Chapman – **Dr Robert Hooke, F.R.S., M.D**: Oxford Microscopist and Experimental Physiologist (12th February)
- Professor John O'Connor - **Development of the Oxford Knee replacement** (26th February)

Also, the first in the series, **Oxford Medical Firsts: Celebrating 800 Years of Oxford Medicine** (Conrad Keating, Writer-In-Residence at the Wellcome Unit for the History of Medicine) is now available as a [BODCast](#) (<http://tinyurl.com/q9dzy72>).

New BHCL Collections Manager

We are pleased to announce that [Owen Coxall](#), until recently one of our Outreach Librarians, has been appointed as **Collections Manager** at Bodleian Health Care Libraries.

Owen's new role will include responsibility for the management and development of our online and print materials as well as continuing his role as Outreach Librarian to Emergency Medicine.



Owen Coxall