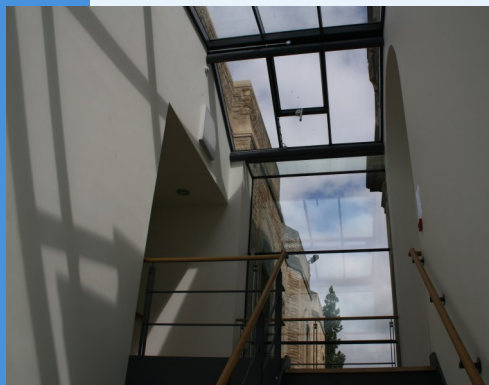


Welcome to Science and Medicine Dispatch, the monthly newsletter bringing you items of interest from the Science and Health Care Libraries of Oxford University. Subscribe by sending a blank email to rsl-and-hcl-newsletter-subscribe@maillist.ox.ac.uk, or contact newsletter.rsl@bodleian.ox.ac.uk. The newsletter can also be read online at www.bodleian.ox.ac.uk/science/about/science-and-medicine-dispatch.



BODLEIAN i•Skills

What's new

- **Bodleian iSkills programme for Michaelmas term**

The iSkills programme of workshops covers referencing software, research data management, Open Access and more. Details are at <http://libguides.bodleian.ox.ac.uk/workshopsbydate>.

- **RSL opening hours**

Term-time opening hours start on Saturday 10th October. We will be open 8.30am to 10pm weekdays, 10am to 4pm Saturdays and 11am to 5pm on Sundays. Details of opening hours can be found at www.bodleian.ox.ac.uk/science/about/hours.

- **3D printing events coming up**

We have three drop-in 3D printing events taking place in this term:

- Friday 16th October 10-1pm and 2-5pm
- Friday 6th November 10-1pm and 2-5pm
- Friday 4th December 10-1pm and 2-5pm

Details of the RSL's 3D printing service can be found at <http://libguides.bodleian.ox.ac.uk/3dprintingscanning>

- **Ada Lovelace**

The Bodleian Libraries and IT Services will host a series of Wikipedia events in Michaelmas term - for details see <http://blogs.bodleian.ox.ac.uk/adalovelace/events/>. The RSL will also host an exhibition, *From Ada to Today*, in the Entrance Hall from 13th October to 13th November to celebrate pioneering women in computing.



Opening Hours (Term)

Monday to Friday 8:30am-10pm

Saturdays 10am-4pm

Sundays 11am-5pm

Contacts

Radcliffe Science Library

Phone: 01865-272800

Email: enquiries.rsl@bodleian.ox.ac.uk

Web: www.bodleian.ox.ac.uk/science/



@radcliffescilib



Radcliffe Science Library

Induction arrangements for new students

To all new students: Welcome to the RSL! Details of your library induction sessions can be found online:

- Undergraduates
<http://tinyurl.com/pseu38t>
- Postgraduates
<http://tinyurl.com/oldyo3j>

Most sessions are led by your Subject Librarian - for contact details, see <http://tinyurl.com/o239t8u>. Guides to resources in your subject can be found at <http://libguides.bodleian.ox.ac.uk/>. Library staff are here to help - please don't hesitate to ask if you have any queries.

Open Access and the next REF

In order to be eligible for the next REF, the final peer-reviewed version of journal articles and conference papers must be deposited in an Open Access repository within three months of acceptance for publication. **Oxford's message to researchers: you deposit; we'll take care of the rest.** Deposit all your journal articles and conference papers in ORA via Symplectic Elements, starting now. **There's information and help on the Open Access Oxford website** (<http://openaccess.ox.ac.uk>). The Bodleian team will check copyright and licensing conditions, create an ORA record and make the full-text available if and when it complies with the requirements of your publisher. If you have any questions, please contact openaccess@bodleian.ox.ac.uk.



Opening Hours

Cairns Library, John Radcliffe

Accessible 24 hours a day, 7 days a week

Staffed 9am-7pm Monday to Friday,
10am-7pm Wednesday

Knowledge Centre, Old Road Campus

Accessible 9am-6pm Monday to Friday

Staffed 9am-6pm Monday to Friday,
10:45am-6pm Wednesday

Contacts

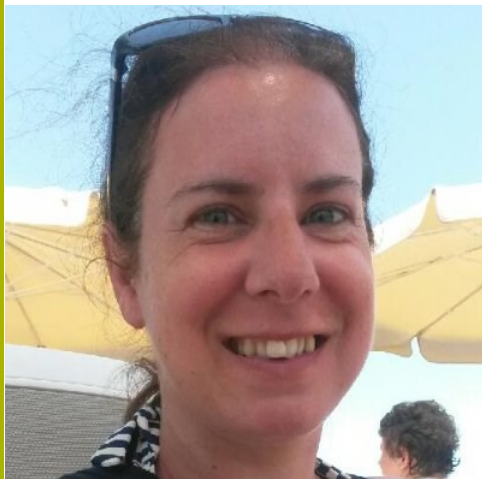
Phone: 01865-221936

Email: hcl-enquiries@bodleian.ox.ac.uk

Web: www.bodleian.ox.ac.uk/medicine

Welcome to Lucinda Lyon and NOC Library update

BHCL are pleased to welcome Lucinda Lyon as Library Supervisor at the NOC Library. We are continuing to improve our services and facilities at the NOC, including installing Bodleian Library Reader Network PCs this month, with further developments such as access to the Bodleian Reader Wi-Fi network and Medical Student PCs to follow shortly.



Lucinda Lyon

Welcome to new Research Students in the Medical Sciences Division

We're here to support you in a number of ways:

- Online Journals, Books and Databases - Access thousands of resources from anywhere using your Oxford Single Sign-On.
- Group and One-to-One Training – Outreach and Subject Librarians can provide training or advice in your department or our libraries.
- Help with Searching and Keeping Up-to-Date - Outreach or Subject Librarians can help you with literature searches for systematic reviews and research project bids.
- Modern Spaces - We have a wide range of IT facilities and software packages, write-up and quiet study space, WiFi and well-equipped group study and training rooms.
- Support for Writing Articles and Theses - We can help you find journals to publish in, run your literature search and manage your references and advise on impact factors, altmetrics and compliance with funding bodies' Open Access policies.

Please contact us for help and advice at hcl-enquiries@bodleian.ox.ac.uk.

There is a LibGuide on MSD Research Resources at

<http://ox.libguides.com/medsci>.

ORCID at Oxford

An ORCID (<http://orcid.org/>) is a unique researcher identifier, used worldwide, that you keep throughout your life and retain even if you move institution. You can create new or connect existing ORCID records with the university this way. More information can be found at <http://ox.libguides.com/orcid>. ORCID is increasingly becoming the method of choice by funders and publishers globally to unambiguously link people to their publications and grants. From August 2015 the Wellcome Trust requires ORCID records in grant applications. Your ORCID record is owned and managed solely by you, not the University.

• What does an ORCID at Oxford look like?

Anyone can register direct on the ORCID site and claim to be at Oxford. But with an Oxford one your affiliation is verified. Your *Employment* information could show as 'Source: ORCID Integration at the University of Oxford' - here's Professor Alison Banham's ID <http://orcid.org/0000-0002-3197-273X>.

• What else does ORCID at Oxford do?

It will save you time and effort as it increasingly provides automated linkages between publisher and funder and University systems.

• How do I get an ORCID ID?

Use ORCID at Oxford (<https://register.it.ox.ac.uk/self/orcid>) to register for an 'official' Oxford-linked ORCID ID. This 'linking' service is possible because Oxford is a member of ORCID.

