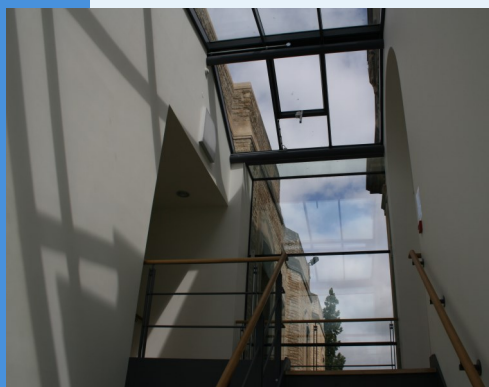


Welcome to Science and Medicine Dispatch, the monthly newsletter bringing you items of interest from the Science and Health Care Libraries of Oxford University. Subscribe by sending a blank email to rsl-and-hcl-newsletter-subscribe@maillist.ox.ac.uk, or contact newsletter.rsl@bodleian.ox.ac.uk. The newsletter can also be read online at www.bodleian.ox.ac.uk/science/about/science-and-medicine-dispatch



What's new

- **Term time opening hours**
Term-time opening hours commence on Saturday 11th October. The RSL will be open 8.30am-10pm on weekdays, 10am-4pm on Saturdays and 11am-5pm on Sundays.
- **Vacation loans**
Vacation loans from the RSL are due back Tuesday 14th October.

Welcome to new students!



Library Assistant

for Oxford Freshers
bodleian.ox.ac.uk/assistant

Library staff are here to help - don't hesitate to ask. We offer the following to help you get started:

- **Training sessions for new students**
Sessions on library services for new students are listed online:
Undergraduates:
www.bodleian.ox.ac.uk/science/training/rsl-undergraduate-induction
Graduates:
www.bodleian.ox.ac.uk/science/training/rsl-graduate-induction
- **Library Assistant**
Library Assistant is a mobile-friendly website to help new students get to grips with Oxford's libraries
www.bodleian.ox.ac.uk/assistant
- **LibGuides**
These are guides written by Subject Librarians to help you find the key resources for your subject.
<http://libguides.bodleian.ox.ac.uk/>



Opening Hours (Term)

Monday to Friday 8:30am-10pm

Saturdays 10am-4pm

Sundays 11am-5pm

Contacts

Radcliffe Science Library

Phone: 01865-272800

Email: enquiries.rsl@bodleian.ox.ac.uk

Web: www.bodleian.ox.ac.uk/science/



@radcliffescilib



Radcliffe Science Library

Bodleian iSkills Michaelmas programme

The **Bodleian iSkills** (formerly known as WISER) programme for Michaelmas is now online at

<http://tinyurl.com/dxhguwq>

Bodleian iSkills is a series of free workshops designed to help you make effective use of scholarly publications and other materials in print and online. Topics covered include searching for scholarly materials, reference management, keeping up to date, measuring impact, and submitting your thesis to [ORA](http://ora.ox.ac.uk).

BODLEIAN
iSkills

OPEN  International
ACCESS WEEK

openaccessweek.org

Open Access Week 2014 - Oxford events

The programme of Oxford events for Open Access Week 2014 (20-26th October) is now online at

<http://openaccess.ox.ac.uk/open-access-week-2014-at-oxford/>.

Speakers include Dr Susanna-Assunta Sansone (Associate Director, Oxford e-Research Centre and Honorary Academic Editor, NPG Scientific Data) and Margaret Hurley (Wellcome Trust).

Opening Hours

Cairns Library, John Radcliffe

Accessible 24 hours a day, 7 days a week

Staffed 9am-7pm Monday to Friday,
10am-7pm Wednesday

Knowledge Centre, Old Road Campus

Accessible 9am-6pm Monday to Friday

Staffed 9am-6pm Monday to Friday,
10:45am-6pm Wednesday

Contacts

Phone: 01865-221936

Email: hcl-enquiries@bodleian.ox.ac.uk

Web: www.bodleian.ox.ac.uk/medicine

Farewell to Anne Gerrish

Anne Gerrish, Cataloguing and Acquisitions Librarian at the Bodleian Health Care Libraries, is retiring at the end of September. Anne has worked in BHCL since 1994, and her colleagues will miss her enthusiasm, support and friendship. We'd like to thank Anne for her hard work, wish her all the best and hope she enjoys a long and happy retirement.



Anne
Gerrish

Welcome to new Research Students the Medical Sciences Division

We're here to support you in a number of ways:

- Online Journals, Books and Databases - Access thousands of resources from anywhere using your Oxford Single Sign-On.
- Group and One-to-One Training – Outreach and Subject Librarians can provide training or advice in your department or our libraries.
- Help with Searching and Keeping Up-to-Date - Outreach or Subject Librarians can help you with literature searches for systematic reviews and research project bids.
- Modern Spaces - We have a wide range of IT facilities and software packages, WiFi and well-equipped group study and training rooms.
- Support for Writing Articles and Theses - We can help you find journals to publish in, run your literature search and manage your references and advise on impact factors, altmetrics and compliance with funding bodies' Open Access policies.

Please contact us for help and advice :

- Clinical Medicine www.bodleian.ox.ac.uk/medicine
- Non-Clinical Medicine www.bodleian.ox.ac.uk/science
- LibGuide MSD Research Resources ox.libguides.com/medsci



Cairns Library

Staff news

Karine Barker has been appointed Life Sciences and Medicine Librarian on a temporary secondment until March 2015.

Karine is the new contact Librarian for users of the departments of Biochemistry, Pathology, Pharmacology and users in non-clinical medicine. She retains her role as Subject Librarian for the departments of Experimental Psychology (EP) and Physiology, Anatomy and Genetics (DPAG). During this secondment period she will be assisted by **Karen Langdon**. Karen's time will be divided between her responsibility as Document Supply Supervisor and her new role as Subject Librarian for EP and DPAG.



Karine Barker

Key Resource – BMJ Case Reports

We are delighted to announce that we have renewed our subscription to this online journal for both the University and the Oxford University Hospitals NHS Trust. BMJ Case Reports has become the largest single online repository of medical cases, with submissions from more than 70 countries. To submit a paper to BMJ Case Reports free of charge please contact us for the Institutional 'Fellowship Code' at hcl-enquiries@bodleian.ox.ac.uk.