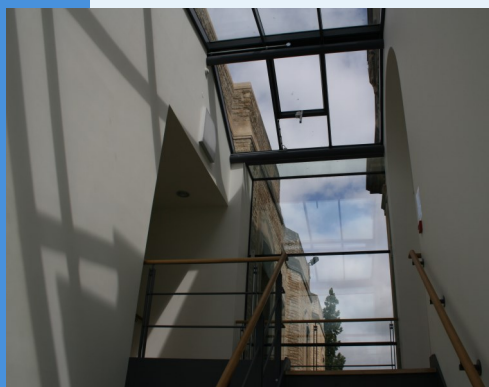


Welcome to Science and Medicine Dispatch, the monthly newsletter bringing you items of interest from the Science and Health Care Libraries of Oxford University. Subscribe by sending a blank email to rsl-and-hcl-newsletter-subscribe@maillist.ox.ac.uk, or contact newsletter.rsl@bodleian.ox.ac.uk. The newsletter can also be read online at www.bodleian.ox.ac.uk/science/about/science-and-medicine-dispatch



Opening Hours (Trinity)

Monday to Friday 8:30am-10pm

Saturdays 10am-4pm

Sundays 11am-5pm

Contacts

Radcliffe Science Library

Phone: 01865-272800

Email: enquiries.rsl@bodleian.ox.ac.uk

Web: www.bodleian.ox.ac.uk/science/

 @radcliffeslib

 Radcliffe Science Library

50th Anniversary of the Science Citation Index

The Science Citation Index (SCI) was first published commercially in 1964 as a printed journal and first made available online in 1972. It became part of [Web of Science](http://www.bodleian.ox.ac.uk/science/) in 1997, which now includes over 1200 journals covering science, social science, arts and humanities. More details can be found at <http://tinyurl.com/luguby5>.



What's new

- **WISER: Copyright - what you need to know**

Tuesday 17th June, 11am-12.30pm,

Seminar Room A, Manor Road Building

This session is aimed at postgraduates, research staff and academics and will cover how copyright affects researchers, using other people's work in your own publications, research and teaching, and publishing your own work - including Open Access publishing.

Book at <http://courses.it.ox.ac.uk/detail/TZD71>.

- **Vacation opening hours**

Vacation opening hours at the RSL start on Monday 23rd June. We will be open 8.30am-7pm on weekdays, 10am-2pm on Saturdays and closed on Sundays.

- **Vacation loans**

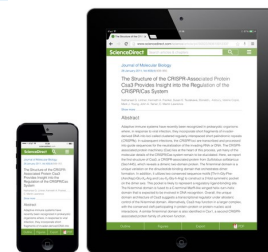
Vacation lending starts on Monday 16th June. Books which normally have a one week loan period will be borrowable for the whole of the summer vacation and due back on Tuesday 14th October.

Science Direct mobile interface

[ScienceDirect](http://www.sciencedirect.com) has now incorporated "responsive design" into its mobile interface to allow easier reading of articles on iOS and Android tablets and phones.

More details can be found at

<http://tinyurl.com/n7sl8p2>



Open Access and Monographs:

Oxford forum with publishers and funders

Wednesday 18 June, 2pm-5.30pm

Radcliffe Humanities Lecture Room

This forum on current challenges and initiatives in open access monograph publishing is part of the *Bodleian Libraries Open Access* series and an opportunity for Oxford academics and researchers to feed into HECFE's Monographs and Open Access Project (see <http://www.hefce.ac.uk/whatwedo/rsrch/rinfrastruct/oa/monographs/>).

Speakers include

- Geoffrey Crossick (HEFCE project, Chair)
- Cecy Marden (Wellcome Trust)
- Frances Pinter (Knowledge Unlatched)
- Rhodri Jackson (OUP and OAPEN-UK)

To book a place please visit <http://courses.it.ox.ac.uk/detail/TZ005>.



Opening Hours

Cairns Library, John Radcliffe

Accessible 24 hours a day, 7 days a week

Staffed 9am-7pm Monday to Friday,
10am-7pm Wednesday

Knowledge Centre, Old Road Campus

Accessible 9am-6pm Monday to Friday

Staffed 9am-6pm Monday to Friday,
10:45am-6pm Wednesday

Contacts

Phone: 01865-221936

Email: hcl-enquiries@bodleian.ox.ac.uk

Web: www.bodleian.ox.ac.uk/medicine

Online Resources for New Doctors – NHS OpenAthens

If you're starting work in the NHS this summer and want access to online databases, ebooks and full text online journals then you need to know about **NHS OpenAthens**, the username and password system used by the NHS to provide access to online resources. Access is available from anywhere with an Internet connection.

Nationally-available resources include bibliographic databases such as *Medline*, *Embase*, *PsycINFO* and *Health Business Elite* as well as hundreds of online textbooks and journals and tools such as *The BNF*. Your OpenAthens account also gives you access to resources purchased by your local Trust library service - here in Oxford we provide access via OpenAthens to resources like *UpToDate*, *ClinicalKey*, *Best Evidence* and *BMJ Case Reports*.

You can register for OpenAthens at <https://openathens.nice.org.uk/> as soon as you're in post in the NHS. If you register from a PC on the NHS network or with an NHS email address, your account will be created automatically and immediately.

For more information or to get a demo or hands-on practice before you leave Oxford then just contact us at hcl-enquiries@bodleian.ox.ac.uk.



Medical Sciences Division DPhil Day

8th July, Tingewick Hall, JR Hospital

This event is a unique and essential opportunity for all DPhil students across the medical sciences division to come together, present their research and network with other students. The day includes student talks and poster sessions, free lunch, exhibitions, presentation prizes and a keynote speaker, Professor Sir Marc Feldmann, FRS.

Register at <https://medscidphilday.eventbrite.co.uk/>

BMJ Case Reports

BMJ Case Reports

(<http://casereports.bmj.com/>) is the largest single collection of case reports online with more than 8,500 peer-reviewed articles from over 70 countries. It offers a high volume of cases in all disciplines so that healthcare professionals and researchers can easily find information on common and rare conditions. Articles are indexed in **PubMed**.

As a member of the University or the OUH Trust you have full-text access to all the case reports. You can also submit your own free of charge - please [contact us](#) to obtain the appropriate Fellowship code.

Borrow an iPad!

A reminder that we have iPads available for loan at the Cairns Library and Knowledge Centre.

The iPads are all set up to access the University wireless networks OWL and Eduroam - available throughout the JR, Churchill, Horton and the NOC as well as some community locations.

The iPads have a wide variety of medical apps and books pre-loaded onto them, including:

- The Oxford Handbook of Clinical Medicine
- Doctor's Toolbag
- PubMed on Tap
- Apple productivity software (Keynote, Pages, Numbers)

A longer list of apps and more information on how to borrow an iPad can be found at <http://tinyurl.com/bhclipad>.

