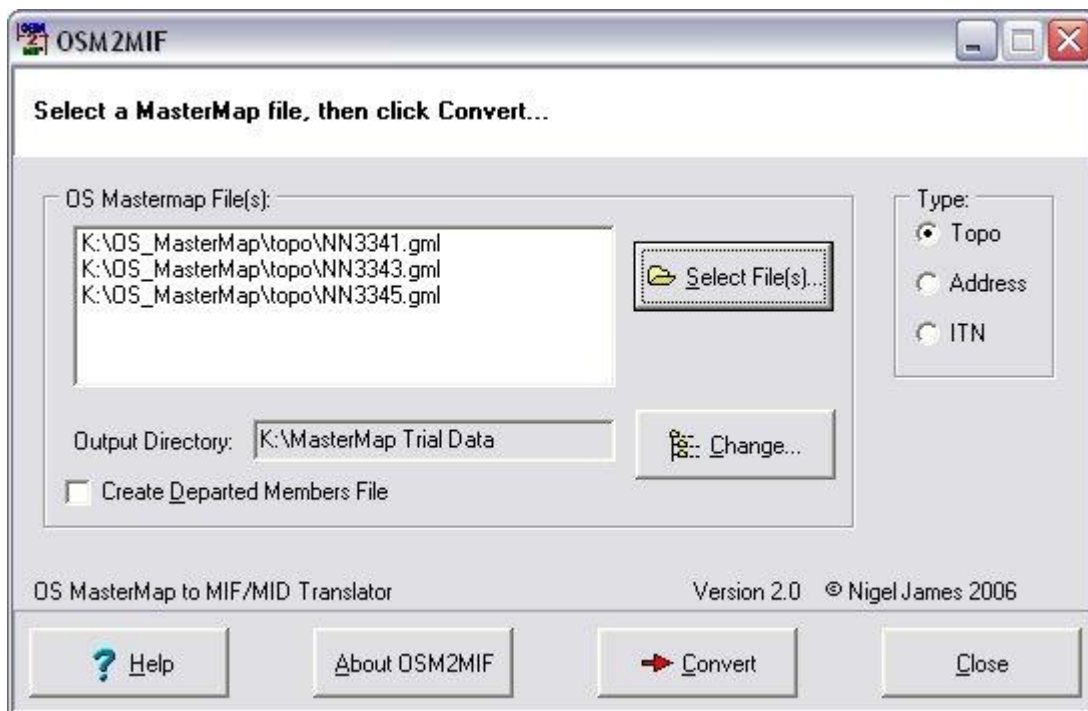


## OSM2MIF - Ordnance Survey MASTERMAP to MapInfo MIF Translator

**NEW Version 2.0 now available - [download it now!](#)** This new version fixes errors occurring with polygons containing inner 'holes'. It also creates a new layer with topographic landforms (e.g: slopes). These are transparent so they can be overlaid on the topo layer. It is recommended that all users update their existing version.



## Why do I need OSM2MIF?

Unlike Ordnance Survey Land-Line data (available from DIGIMAP) which is supplied in NTF format, MasterMap is in GML format. Versions of MapInfo prior to v 8.0 do not support the full import of OS gml. OSM2MIF translates MasterMap data files into MapInfo MIF (**MapInfo Interchange Format**). MIF files can then be imported and opened in MapInfo. Once the files have been imported, they are saved as MapInfo tables (.tab files).

### Features:

OSM2MIF translates all three layers (topographic, address and ITN). Attribute data is maintained (currently not all routing data in the ITN layer is supported, but this may be improved in a later release). Update versions of MasterMap include Departed Members and a list of these can be extracted using OSM2MIF. Single or batch file processing is possible.

A free MapInfo tool (OSM Batch Import) is included - this will import all layers in a single operation.

## Installing OSM2MIF

[Download](#) the .zip file to a temporary folder, unzip it, then run the file *setup.exe* to start installation. The program will by default create a folder in your program files folder and install itself. OSM2MIF has help which guides you through the simple steps to translate files.

