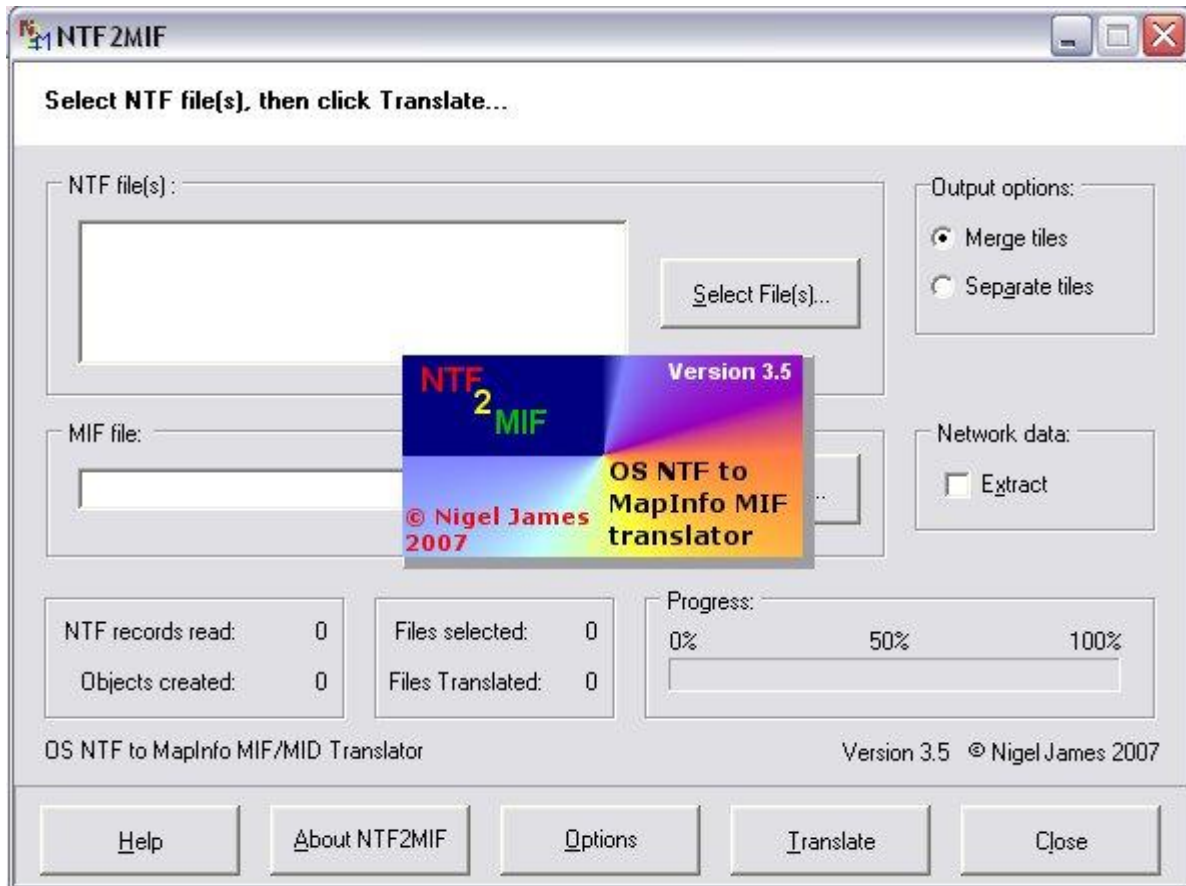


# NTF2MIF - Ordnance Survey NTF to MapInfo MIF Translator - *Updated 2007*

**Version 3.5 is now available - [download it now!](#)**



## Why do I need NTF2MIF?

Ordnance Survey digital data (available from DIGIMAP) is supplied in NTF format, which MapInfo cannot import. NTF2MIF translates NTF data files into MapInfo MIF (MapInfo Interchange Format). MIF files can then be imported and opened in MapInfo. Once the files have been imported, they are saved as MapInfo tables (.tab files).

## What's new in Version 3.5?

**Code-POINT NTF is now supported**

## Previous updates:

**Version 3.4:** Boundary-Line added and minor bug fixes.

**Version 3.3:** Improved handling of large data files. MIF syntax error in selective Strategi layer processing fixed.

**Version 3.2:** New version of Meridian 2 now supported.

**Version 3.1:** OSCAR datasets added

Default folder for opening NTF files and saving MIF/MID files can be set.

**Features:**

Multiple NTF files can be translated at once. Files can be merged to create a single, seamless MapInfo table. Text objects can be translated to a separate layer. True-type fonts can be used (to display cartographic symbology). Network data can be extracted from Meridian 2 and Strategi data. NTF2MIF is fast and easy to use and is the only free translator which translates *all* DIGIMAP data products.

**Installing NTF2MIF**

**NOTE:** If you have a previous version of NTF2MIF, uninstall it **BEFORE** installing the new version!

Download the .zip file to a temporary folder, unzip it, then run the file *setup.exe* to start installation. The program will by default create a folder in your program files folder and install itself. NTF2MIF has help which guides you through the simple steps to translate files. The installation files include a user guide in rtf format.