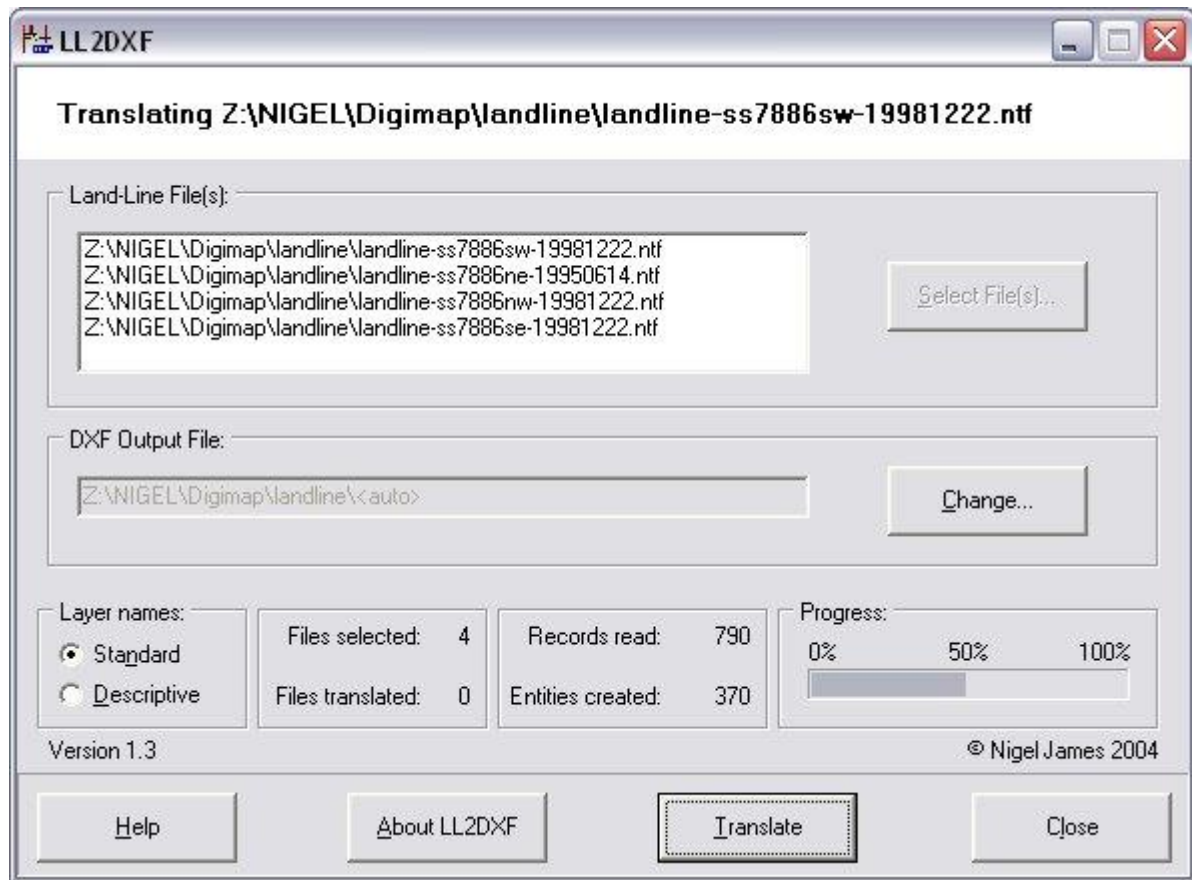


LL2DXF - Ordnance Survey LAND-LINE to DXF Translator - *New Nov. 2004*

Version 1.3 now available - [download it now!](#)



Features:

LL2DXF translates OS Land-Line tiles in NTF format to DXF (AutoCAD release 12 compatible). Single tiles can be translated, or a batch of Land-Line NTF tiles can be converted in one go. DXF blocks (Land-Line features such as tree symbols, flow arrows etc) are created and colours are based on the OS specifications.

LL2DXF has been updated. The **NEW Version 1.3** enables the output location to be changed when batch translating files and gives the choice of standard or descriptive layer names.. If you have downloaded the previous version, replace it with this updated version.

NOTE: If you have the previous version of LL2DXF, uninstall it **BEFORE** installing the new version!