

JANUARY - MARCH 2012

What's on at
THE BODLEIAN
Libraries

UNIVERSITY OF OXFORD



THE ROMANCE
OF THE
MIDDLE AGES
28 JAN – 13 MAY
ADMISSION FREE



Bodleian Libraries
UNIVERSITY OF OXFORD



THE QUEEN'S
ANNIVERSARY PRIZES

Welcome to What's on at the Bodleian

Dear Visitor,

Welcome to the Bodleian Libraries. We invite you to attend the many events, exhibitions and displays which draw on our remarkable collections. We are starting the year 2012 with an exhibition on medieval romance as depicted in text and pictures (*The Romance of the Middle Ages* opens 28 January). Three temporary displays will showcase our Walter Harding collection of opera, poetry and song (January), our Japanese collection (February) and Haydn's songs (March). If you would like specialist insight into our collection, you are welcome to attend our exhibition lunchtime lectures or our Centre for the Study of the Book masterclasses. Our guided tours will give you an introduction to the history of both the Libraries and the University. Whichever activity you choose to attend, I am sure you will enjoy the Bodleian experience.

Sarah Thomas, Bodley's Librarian



The Grail, from a 14th-century collection of French Romances. Detail of the miniature from the manuscript, Sir Degreus. The last of Sir Gauvain, Sir Eglamour of Artois.

Contents

THE ROMANCE OF THE MIDDLE AGES	P3
TALKS AND LECTURES	P4
VISIT THE BODLEIAN LIBRARY	P6
TEMPORARY DISPLAYS	P8
WHAT'S ONLINE	P9
FRIENDS OF THE BODLEIAN	P10
BODLEIAN LIBRARY PUBLISHING / SPECIAL EVENTS	P11

This brochure is published by the Communications Office, Bodleian Libraries, University of Oxford
Tel: 01865 277627 Email: communications@bodleian.ox.ac.uk
Designed by Sophie Durand, edited by Oana Romocea

ADMISSION
FREE

The Romance of the Middle Ages

28 JANUARY – 13 MAY 2012

Exhibition Room, Bodleian
Library, Old Schools Quad,
Catte Street, Oxford OX1 3BG

OPENING HOURS:

Monday to Friday 9.00 – 17.00

Saturday 9.00 – 16.30

Sunday 11.00 – 17.00

The Romance of the Middle Ages exhibition showcases the Bodleian's outstanding collection of manuscripts and early printed books containing medieval romance. These range from lavishly illustrated volumes about King Arthur or Alexander the Great, to personal notebooks and fragments only saved by chance. This exhibition highlights works by great figures of English medieval literature such as Geoffrey Chaucer and the anonymous *Gawain-Poet*. We set these texts alongside books from around Britain and Europe, and artworks that illustrate romance legends.

The amazing variety of medieval romance continues to feed our imagination. This colourful exhibition looks at how its compelling stories have inspired writers and artists across the centuries from the early modern period (including Shakespeare, Ariosto and Cervantes); through medievalism in the eighteenth and nineteenth centuries (including Walter Scott, Edward Burne-Jones and William Morris); to contemporary versions and adaptations (including manuscripts and drafts by JRR Tolkien, Philip Pullman and the Monty Python team).

HIGHLIGHTS OF THE EXHIBITION INCLUDE:

- *The Song of Roland* – the earliest copy of France's national epic, Mid-12th century
- The earliest surviving romances in English – *King Horn* and *Havelok the Dane*, c. 1300–1325
- *Sir Gawain and the Green Knight* – One of the most precious manuscripts of Middle English poetry. On loan from the British Library, c.1400
- The Red Book of Hergest – one of the most important books written in Welsh, containing *The Mabinogion* and many other texts, c.1400
- William Caxton's *The Recuyell of the Historyes of Troye* – a copy of the first book ever printed in the English language, 1473/4
- A draft illustrated page from JRR Tolkien's *The Lord of the Rings*, 1937–49
- *Monty Python and the Holy Grail* – Terry Jones's own working copy of the screenplay for the film, never shown to the public before, 1973

Find out more online at
www.bodleian.ox.ac.uk/exhibitions

Follow us on twitter
[#BODRomance](https://twitter.com/bodleianlibs)



Top: *Roman de Troie* by Pierre de Beauveau

Bottom: *The Earl of Toulouse*



<http://medievalromance.bodleian.ox.ac.uk>



Talks and lectures

Convocation House, Old Bodleian Library (Entrance in Old Schools Quadrangle)

13.00 – 13.30 **FREE ADMISSION - ALL WELCOME**

LECTURES TO ACCOMPANY THE EXHIBITION 'THE ROMANCE OF THE MIDDLE AGES'

Wednesday, 1 February

Before Tolkien: Manuscripts, Audiences and Readers of Middle English Romance

Dr Alison Wiggins (Senior Lecturer in English Language, School of Critical Studies, University of Glasgow)

Wednesday, 7 March

Medieval Romance and the Gift of Storytelling

Dr Nicholas Perkins (University Lecturer and Tutor in English, St Hugh's College, Oxford; Curator of the exhibition)

Wednesday, 15 February

The Birth of Romance in England

Dr Laura Ashe (University Lecturer and Tutor in English Literature, Worcester College, Oxford)

Friday, 23 March

Shakespeare and Medieval Romance

Professor Helen Cooper (Professor of Medieval and Renaissance Literature, Magdalene College, Cambridge)

LUNCHTIME LECTURE FOR THE WORLD BOOK DAY DISPLAY

Thursday, 1 March

The Watsons: Jane Austen Practising

Professor Kathryn Sutherland (Professor of Bibliography and Textual Criticism, St. Anne's College, Oxford)

FRIENDS OF THE BODLEIAN LECTURES

Tuesday, 7 February

Reconstructing a remarkable 17th-century garden from John Aubrey's drawing of the Deepdene, Dorking

Sarah Couch (Architect, RIBA and Visiting Lecturer, University of Bath)

Tuesday, 28 February

Signs of life at the Bodleian: genealogical diagrams in Bodleian collections

Dr Giles Bergel (Tutorial Fellow, Faculty of English Language and Literature, University of Oxford)

Wine and sandwiches will be served in Chancellor's Court after each lecture at a cost of £7 per person, for which bookings should be made and paid for in advance with the Administrator.

The FOB lectures are open to all but please register in advance.

The Administrator, Friends of the Bodleian, Bodleian Libraries, Broad Street, Oxford OX1 3BG. Tel: 01865 277234,

Email: fob@bodleian.ox.ac.uk

All our lectures are FREE and open to the general public unless otherwise stated

CENTRE FOR THE STUDY OF THE BOOK

DISCOVERING OUR COLLECTIONS

TALKS AND MUSIC

Divinity School and Convocation House
17.00-19.00

Wednesday, 18 January
Ragtime to Riches – the Walter Harding collection of opera, poetry and song

Talks by Dr Abigail Williams (University Lecturer in English, University of Oxford) and Professor Michael Burden (Reader in Opera Studies, University of Oxford). Music by ALVA.
To obtain a free ticket: e-mail rspv@bodleyan.ox.ac.uk, with subject line: Harding Music.

CONFERENCE

Thursday, 22 March – Saturday, 24 March

How the secularization of religious houses transformed the libraries of Europe, 16th-19th centuries

Booking essential. See the CSB website for programme and registration details.

For a calendar of events and more information about book and library history at the Bodleian, see the CSB website at: www.bodleian.ox.ac.uk/csb

LECTURES

THE ANNUAL MCKENZIE PUBLIC LECTURE

Convocation House
17.00-18.00

Thursday, 9 February
Merchants of Culture: the publishing business in the 21st century

John B. Thompson (University of Cambridge)

MODERN POLITICAL PAPERS

Opening lecture

Tuesday, 24 January
The documentary spoor of Clement Attlee

Professor Peter Hennessy (Queen Mary, University of London)
Convocation House
17.00-18.00

In conjunction with the Attlee Foundation

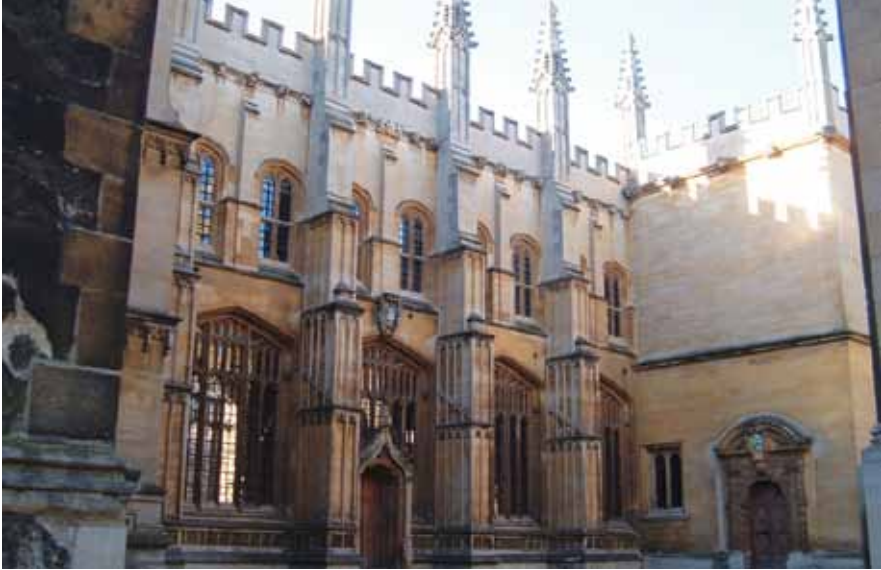
For further lectures in this series, see the CSB website.



Top: Harding at the organ
Bottom: Two lions passant with raised forepaws, facing each other (Germany, c.1500-20)



Centre for the Study of the Book



The Divinity School, Bodleian Library

Visit the Bodleian Library

The Bodleian Library was founded by Sir Thomas Bodley and officially opened in 1602. In its reading rooms generations of famous scholars have studied through the ages, amongst them five monarchs, 40 Nobel Prize winners, 26 British Prime Ministers and writers including Oscar Wilde, CS Lewis and JRR Tolkien. It is the largest university library in the UK and the combined library collections number more than 9 million printed items, in addition to 30,000 e-journals and vast quantities of materials in other formats. The Bodleian Library is also a major visitor attraction drawing over 300,000 visitors a year.

COME AND VISIT:

The Bodleian welcomes visitors to see its iconic buildings and learn about the Library's history and its vast collections.

Whether you have just half an hour or half a day to spare, there is always a chance to explore the historic buildings and quadrangles.

OUR WORLD-FAMOUS BUILDINGS INCLUDE:

- **The Old Schools Quadrangle** with its magnificent buildings and monumental Tower of the Five Orders of Architecture.
- **The Divinity School**, a masterpiece of English Gothic architecture with its beautiful carved stone ceiling - the oldest teaching room and the first examination school of the University of Oxford.
- **The 17th-century Convocation House**, where Parliament was held during the Civil War, and Chancellor's Court.
- **The medieval Duke Humfrey's Library**, our oldest reading room.
- **The Radcliffe Camera**, the first rotunda library built in Britain.
- **The underground book stack and tunnel** between the Old Bodleian Library and the Radcliffe Camera.



Tour Highlights

UPSTAIRS DOWNSTAIRS TOUR

Wednesdays and Saturdays at 9.15 - duration 90 mins

Visit the former book stack underneath the Radcliffe Camera and the underground tunnel. These areas have been re-opened after a period of extensive redesign and refurbishment. Come and see these brand new rooms and walk through the tunnel from the Camera to the Bodleian Library. The tour takes you to the Old Bodleian Library and the Radcliffe Camera, too.

EXPLORE THE READING ROOMS TOUR

Sundays, 11.15 & 13.15 - duration 90 mins

Explore the Library's wonderful reading rooms where famous scholars have studied through the ages. In Duke Humfrey's Library, you will be shown Selden End, which is not accessible to visitors on any other day of the week. You will also visit the Upper Reading Room with its magnificent 17th-century painted frieze. The tour also includes a visit to the Radcliffe Camera.

SIR THOMAS BODLEY'S FAMILY TOUR

Most Sundays during school holidays at 14.45 - duration 30 mins

See the Divinity School and Duke Humfrey's medieval library. Learn about books and libraries in one of the oldest libraries in the world, where Harry Potter was filmed! The tour is suitable for families with young children, aged 5-11.

The Bodleian is a working University library and occasionally tours must be cancelled or re-routed at short notice. See page 12 for how to book a tour.

TOUR VOUCHER

Visit the Bodleian Library in January or February 2012 for a one-hour guided tour for just £5 per person when 2 people book (usual price £6.50).

Tickets are sold from 9am on the day on a first-come first-served basis, when you present this voucher. Please check in advance for times and dates.

Groups (10-13 people) must be booked in advance.

Please ask for a booking form, quoting WHATSON2012

Call 01865- 277224 or see www.bodleian.ox.ac.uk

Offer subject to availability and in exchange for voucher only. No copies. Normal terms and conditions also apply.



Top: Old Schools Quadrangle
Bottom: Duke Humfrey's Library



Temporary Displays - ADMISSION FREE

Old Library Entrance

Mon-Fri 9.00 - 19.00

Sat 9.00 - 16.30

Sun 11.00 - 17.00

JANUARY

Ragtime to riches, a musical legacy at the Bodleian Library

7 - 29 January

Walter Newton Henry Harding was not an academic or a book dealer – he worked as a ragtime pianist in Chicago – yet he was able to build an enormous collection of poetry and song, sheet music, and opera scores. His important collection of music ranged from French and Italian opera scores to English music hall songs. His legacy is celebrated in this display and with a concert and talks on 18 January (see page 5).

FEBRUARY

36 Kasen: the thirty-six immortals of Japanese poetry

3 February – 4 March

This small display of illustrated manuscripts from the Bodleian Japanese Library will celebrate the thirty-six great poets. Despite their ancient history, the thirty-six poets, one of the most important and durable icons in Japanese culture, are virtually unknown outside Japan.

MARCH

Haydn à l'anglaise: his songs in late 18th-century England - including some he did not know he had written

10 March – 8 April

Haydn's songs were so popular that new ones had to be invented. Publishers took melodies from his instrumental music and 'adapted' them to English poetry. This display coincides with a lecture on 30 March by Dr Derek McCulloch and a short concert by his ensemble Café Mozart, who have recently recorded some of this music from the printed sources in the Bodleian Library.

WORLD BOOK DAY DISPLAY

Jane Austen: a literary genius at work

1 March, 10.00 – 16.00

Divinity School

A one-day display of Jane Austen's manuscripts from the Bodleian Library collections showing the newly acquired handwritten manuscript of her unfinished novel *The Watsons*. Extensively revised and corrected throughout, the manuscript is a testimony of Jane Austen's efforts to give shape to the earliest ideas as they pour onto paper, as she reviews, revises, deletes and underscores. *The Watsons* is the very genesis of fiction from one of the Britain's greatest and best-loved writers. Also included in the display will be *Volume the First*, a manuscript of Austen's juvenilia.



What's Online

SELDEN MAP

<http://seldenmap.bodleian.ox.ac.uk>

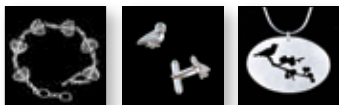
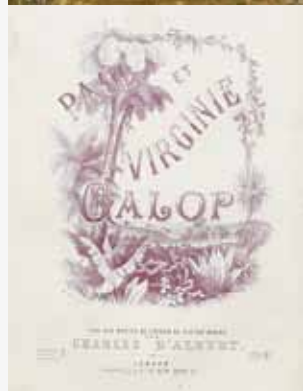
This is the earliest Chinese map not only to show shipping routes, but also to depict China as part of a greater East and Southeast Asia, and not the centre of the known world. This remarkable watercolour map came to the Bodleian in 1659 from the executors of John Selden, the London lawyer and historical and linguistic scholar. Dating from the late Ming period, it shows China, Korea, Japan, the Philippines, Indonesia, Southeast Asia and part of India. The map shows shipping routes with compass bearings from the port of Quanzhou across the entire region. It has recently benefited from extensive conservation work and new research. The map is now available online in high-resolution format for consultation.

WHAT'S THE SCORE AT THE BODLEIAN?

www.bodleian.ox.ac.uk/bodley/library/special/projects/whats-the-score

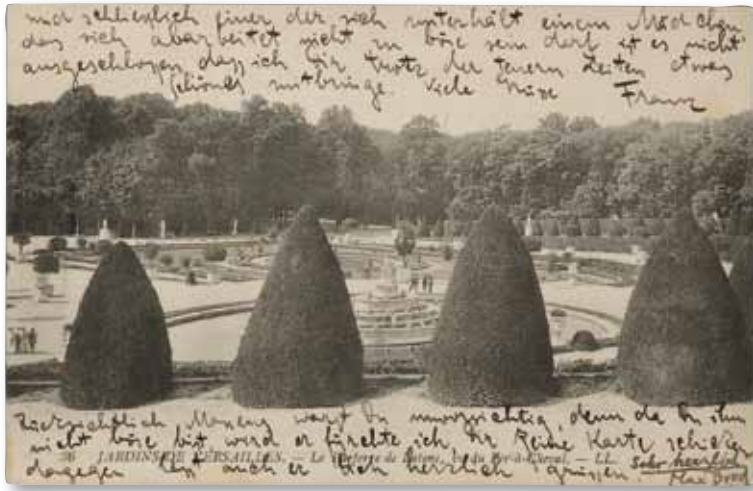
Help us to describe the Libraries' digitized music collections. We would like to invite you to help us catalogue about 4,000 unbound music scores, mostly sheet music from the period 1860-1880 which includes dance music and other pieces designed for home entertainment, many with illustrated covers. You don't need to be a music expert.

*Top: Selden Map
Bottom: Paul et Virginie Galop*



The Bodleian Libraries' Shop has recently launched a new **e-commerce website** where many exclusive gifts and publications inspired by the Library's famous collections can be purchased. In 2012 there will be new features added to the website such as images of the source material on the product pages, allowing the customers to gain further insight into each product's relevance and its provenance. All profits help fund the conservation, collection and care of the libraries' remarkable collections.

www.bodleianshop.co.uk



Kafka Postcard from a collection of Kafka correspondence acquired recently with the help of Bodleian's Friends

Friends of the Bodleian

Founded in 1925, the Friends of the Bodleian is one of the oldest organizations of its kind. It provides funds for material that would otherwise be beyond the Library's reach. It also helps preserve the priceless collections and explains their significance through lectures and literary, musical and other events.

MEMBERSHIP LEVELS

- Friend - £25 p.a.
- Student Friend - £10 p.a.
- Friend (dual membership) - £40 p.a.
- Honourable Friend - £40 p.a.
- Honourable Friend (dual membership) - £70 p.a.
- Life Friend - £500
- Life Friend (dual membership) - £900

A SELECTION OF BENEFITS

- Free lectures on the Library's buildings, history, collections and services, and on more general cultural topics
- Literary and musical evenings with eminent figures discussing their work
- Private views of the Library's exhibitions and other events

- Special tours of the Library and visits to other libraries in Oxford and elsewhere
- A 10% discount on the price of a reader's ticket for the Library for those members not eligible for a free reader's ticket on other grounds, subject to the Library's normal admission requirements
- A 10% discount, obtainable online, in person or by post, on purchases from the Library Shop.
- The opportunity to obtain a pass from the Admissions Office to take guests to visit Arts End of Duke Humfrey's Library
- Two issues per year of the Friends' *Newsletter*

For more information about the work of the Friends of the Bodleian and how to become a member, please contact:

The Friends' Administrator
Friends of the Bodleian
Bodleian Library
Broad Street
Oxford OX1 3BG

tel: 01865 (2)77234 / (2)77596

fax: 01865 (2)77187

email: fob@bodleian.ox.ac.uk

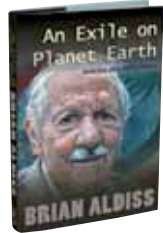
www.bodleian.ox.ac.uk/bodley/friends

Bodleian Library Publishing - NEW TITLES

An Exile on Planet Earth: Articles and Reflections

Brian Aldiss

These personal and revealing essays by the master of science fiction uncover the influences behind his writing and offer new insights into the man and his world. Book launch - 20 March. See details below. **Price £19.99 hb**



The Romance of the Middle Ages

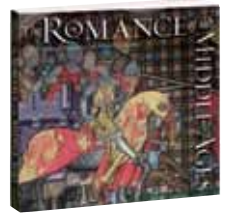
Nicholas Perkins and Alison Wiggins

'An altogether delightful book. It is hard to imagine a book that does its job, of introducing medieval romance and its after-life to the general reader, more perfectly.'

– Derek Pearsall, *Professor Emeritus, Harvard University*

This title accompanies the Bodleian's exhibition (28 Jan - 13 May 2012).

Price £19.99 pb



Request a catalogue, or place an order:

Tel: 01767 604968 | Email: publishing@bodleian.ox.ac.uk

Web: www.bodleianbookshop.co.uk

Special Events

THE OXFORD SEMINARS IN

CARTOGRAPHY - 19th Annual Series

University of Oxford Centre for the Environment

South Parks Road, Oxford, OX1 3QY

17.00 - 18.30

Thursday, 23 February

The Military Survey of Scotland

(1747-1755): A Family Affair?

Rachel Hewitt (Wolfson College, Oxford)

Space limited - for further details, please contact: nick.millea@bodleian.ox.ac.uk or 01865 287119

The Oxford Seminars in Cartography are supported by the Friends of TOSCA, ESRI (UK) Ltd, Oxford Cartographers, the British Cartographic Society, the Charles Close Society, and the School of Geography and the Environment.

BOOK LAUNCHES (Convocation House)

Private Acts: The Acrobat Sublime
by Harriet Heyman; photographs by
Acey Harper

Monday 23 January

17.00 Display of selected materials from the Bodleian illustrating acrobatics over the centuries

17.30 A conversation about 'dancing on the thin edge of possibility'. Heyman and Harper will screen videos on the making of this extraordinary photographic record of acrobats in unexpected open spaces.

An Exile on Planet Earth: Articles and Reflections by Brian Aldiss

Tuesday 20 March

17.30 Hosted by Bodley's Librarian. Brian Aldiss will offer a short reading from his book to be followed by a book signing and drinks in the Divinity School.

These events are free and open to all but please register in advance

Email: wilma.minty@bodleian.ox.ac.uk

Tel: 01865 277084



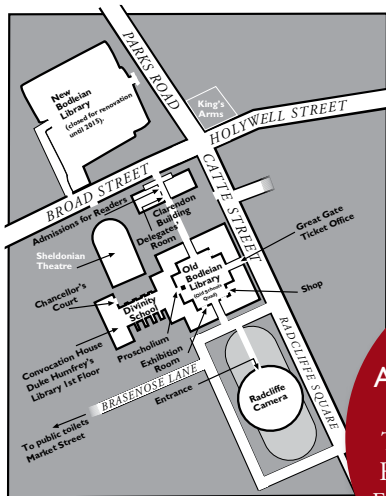
We offer a variety of tours

PLEASE VISIT OUR WEBSITE FOR LATEST UPDATES:
WWW.BODLEIAN.OX.AC.UK/ABOUT/VISITORS

TOURS LED BY A GUIDE	
30-minute mini tour	£4.50
60-minute standard tour	£6.50
90-minute extended tour (can be booked in advance)	£13.00
AUDIO TOURS (SELF GUIDED)	
Individual Ticket	£2.50
Family Ticket	£6.00
VISIT THE DIVINITY SCHOOL (SELF GUIDED)	
Individual Ticket	£1.00
Individual Ticket with brief introductory talk (must be booked in advance)	£2.00
FAMILY VISIT TO THE DIVINITY SCHOOL (INCLUDES CHILDREN'S TRAIL SHEET)	
Admits 2 adults and 3 children	£3.50
Thomas Bodley's Children's Trail Sheet	

The Bodleian is a working academic library and tours are occasionally cancelled or re-routed at short notice. For special tours see page 7.

- Tour tickets are available on the day from the Ticket Office at the Great Gate, Old Schools Quadrangle (access from Catte Street).
- Group visits must be booked in advance. Please email or call us.
- Children aged 11 and over are welcome to join the guided tours.
- Self-guided audio tours include external quadrangles and the Divinity School, but no reading rooms.
- We regret there are no public toilets available.
- We are closed on Easter Sunday.



**VISITOR
 OPENING HOURS**
 Mon - Fri 9.00 - 17.00
 Sat 9.00 - 16.30
 Sun 11.00 - 17.00

**LET US HELP
 ARRANGE YOUR VISIT**
 Contact us at:
 Tel: +44 (0) 1865 277224
 Fax: +44 (0) 1865 277218
 Email: tours@bodleian.ox.ac.uk

SHOPPING

The Bodleian Shop stocks many exclusive gifts designed in-house, inspired by the Library's famous collections.

We look forward to welcoming you.

Open Monday – Friday
 9.00 - 17.15
 Saturday 9.00-16.45
 Sunday 11.00-17.00

Tel: 01865 277175
 Email: shop@bodleian.ox.ac.uk
 Website:
www.bodleianshop.co.uk

ACCESS

Most public areas are accessible. There are five on-street disabled parking spaces near the Bodleian Library. Assistance dogs welcome. Transcripts and large-print materials are available. Please note our tours involve climbing stairs and we regret there are no lifts available.

KEEP IN TOUCH

If you would like to receive our monthly e-update with information on exhibitions and events, subscribe to: www.bodleian.ox.ac.uk/bodley/about/exhibitions/register

FRIENDS GO FOR FREE

Join the Friends of the Bodleian and you can have a private tour of the Bodleian Library for free. For details visit the FOB website www.bodleian.ox.ac.uk/bodley/friends