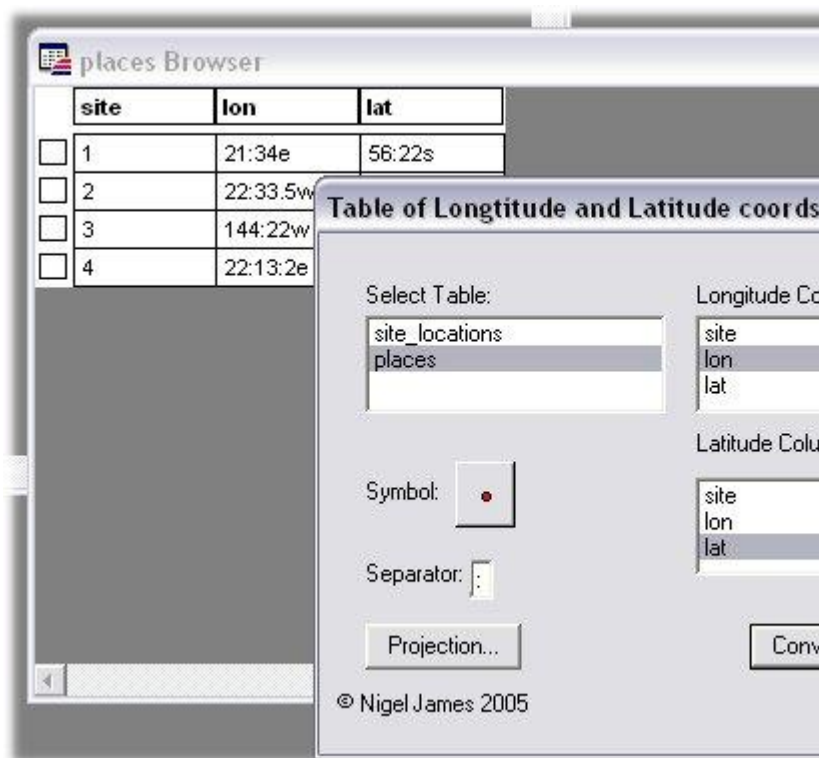


CONVERSION TOOLS - Coordinate conversion tool for MapInfo -

Conversion Tools is an essential MapInfo tool for handling point data files – download free!

Convert British OS National Grid refs to eastings and northings and create points - and convert Lon/Lat coordinates to decimal degrees and create points - it converts both tables of coordinates or single instances quickly and easily. It can also extract coordinates from a table. Conversion Tools can be used with MapInfo version 6.0 onwards

To download Conversion Tools, right-click [here](#), then click *Save Link As...*



Conversion Tools converts tables of conventional National Grid references or single grid references to eastings and northings in metres (correct projection is selected automatically). It will also create a symbol for each point. Also, a single GR can be entered and the location mapped as a point symbol on a map. This is much quicker and easier than the normal MapInfo method! The eastings and northings values are added to the table in two new columns.

Conversion tools also converts tables of Lon/Lat and places single points in Lon/Lat as well (any MI projection can be selected).

These original coordinates can all be converted:

OS GR	Lat	Lon
SP5 1	21:20:2 N	4:1 2:2 3W
TL2 361	23:23S	156 :3W
TQ4 46 559	56.48N	21. 3W
S243 194	11:23.5S	87: 20. 55E

OS grid references can have 2,4,6 or 8 digits.

Lat/Lon can be in:
degrees:minutes:seconds,
degrees:minutes
degrees:decimal minutes

Mixed precision coordinates will be automatically converted to the best precision

Have a look at a [guide](#) to creating data files for use in MapInfo, using Conversion Tools.

To download **Conversion Tools**, right click [here](#) and select *save link as*.

Installing Conversion Tools.

1. Save *cvtools.mbx* in your MapInfo/Tools folder.
2. In MapInfo, open the Tools menu and click Tool Manager.
3. In the Tool Manager dialog click the Add Tool... button.
4. Click the small button next to the Location box and go to the folder containing Conversion Tools and select it.
5. Type *Conversion Tools* in the Title box and click OK.
6. Back in the Tool Manager dialog, click *both* check boxes next to Conversion Tools. It will then automatically add itself to your menu bar each time you run MapInfo.